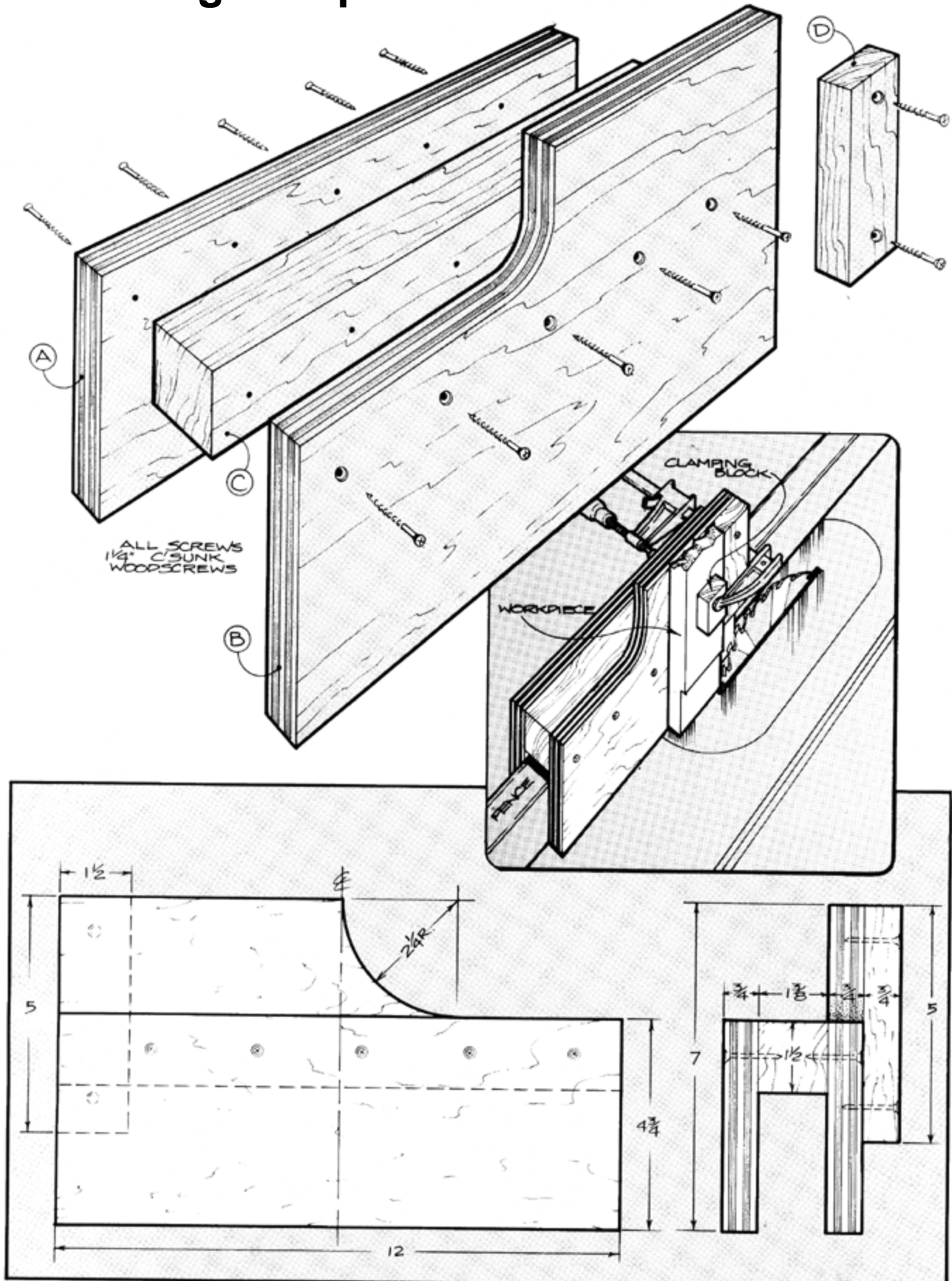


## Project 14740EZ: Tenon Jig

*The tenon jig is one of the most frequently used table saw accessories. Although it is used primarily to cut tenons, the jig can also be used to groove, bevel, or perform any number of other operations on the ends of boards. As shown in the photo, the workpiece is positioned against the stop (D) and clamped securely to the jig. A clamp block protects the workpiece from the clamp jaws.*

*Most commercially sold tenon jigs mount in the miter gauge slot. Since our jig fits over the table saw fence, it is adjustable to practically any position. The jig shown is sized to fit our table saw, a Rockwell Unisaw. Naturally you must size your tenon jig to fit the fence on your particular saw.*

# Tenon Jig Complete Schematic



# Tenon Jig Step-by-Step Instructions

1. Select pieces of 3/4" thick birch plywood to make the jig sides (A and B).
2. Select a solid hardwood to make the center section (C) and stop (D).
3. Take care to ensure that all measurements and cuts are accurate, and cut parts A through D. **NOTE: The jig must fit snugly over the fence, yet must not be so tight that it is prevented from sliding back and forth.**
4. Assemble the jig with glue and countersunk screws, as illustrated.
5. Leave unfinished, but every so often apply a coat of paraffin wax on the surfaces in contact with the saw. This will help the jig slide smoothly.

---

These plans were originally published in Volume 10, Issue 4 of *The Woodworker's Journal* (July/Aug. 1986, pages 50-51).