

Project 15157EZ: Paper Towel Holder

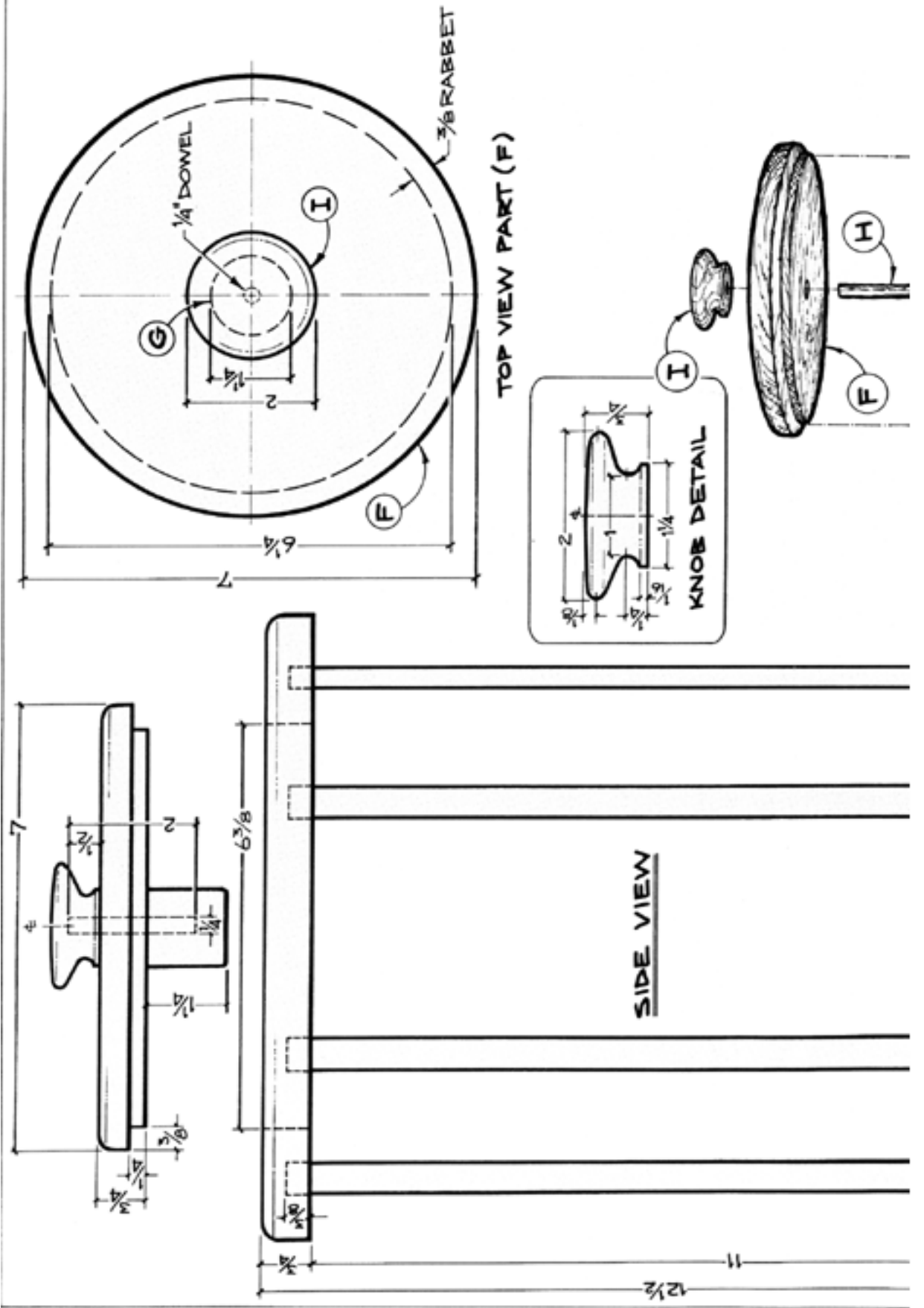
The standard paper towel holder is an uninspired piece of plastic that is normally attached to a wall. It can hardly be considered portable or suitable for use on the dinner table. Tearing off the towels usually turns into a two-handed process as too often the energetic one-handed approach results in the entire roll popping out and ending up in a sink full of dishwasher or all over the kitchen floor. This attractive paper towel holder, in addition to overcoming these problems, will fit in well with both kitchen and dining room decors. We used oak for all parts. If you can't get oak dowel stock locally, it can be ordered.

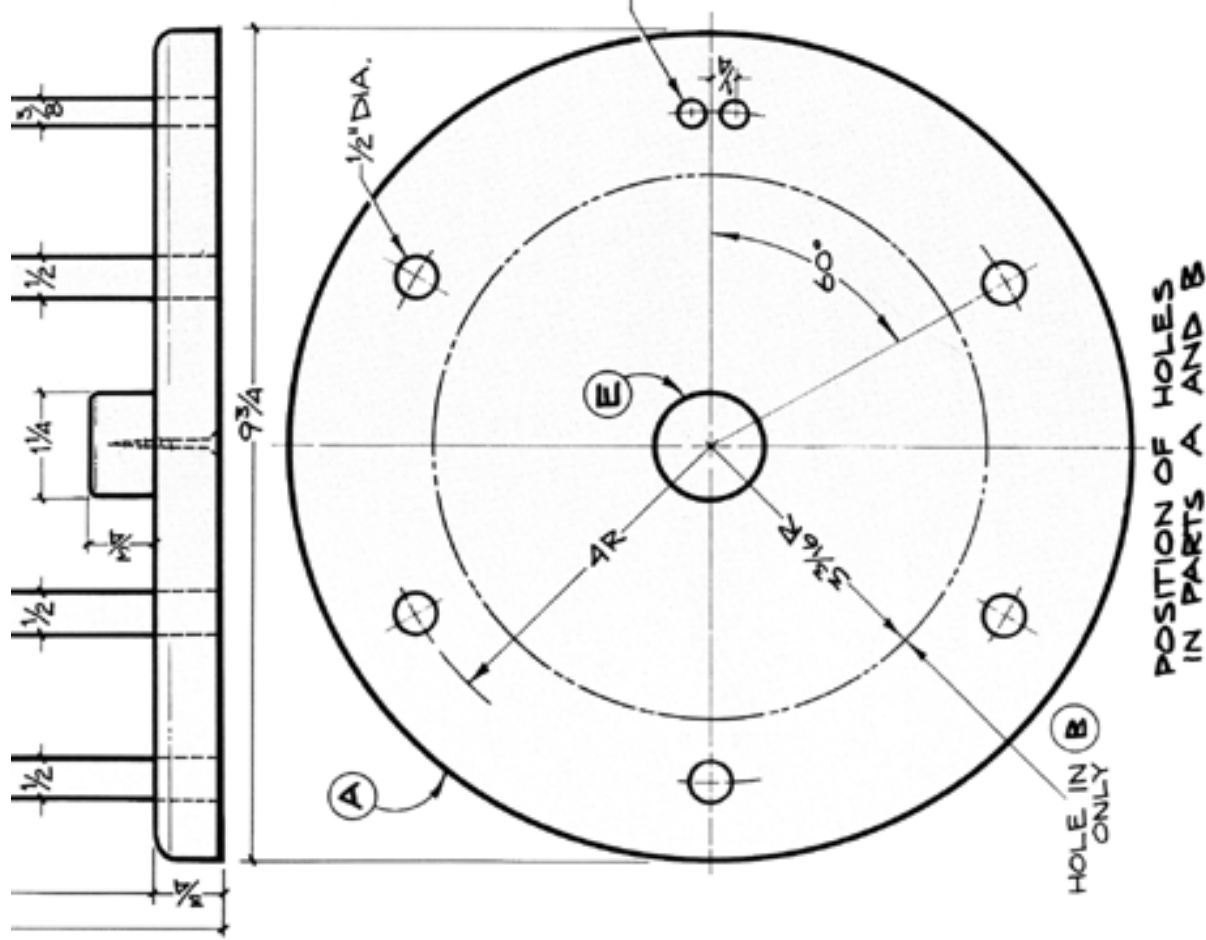
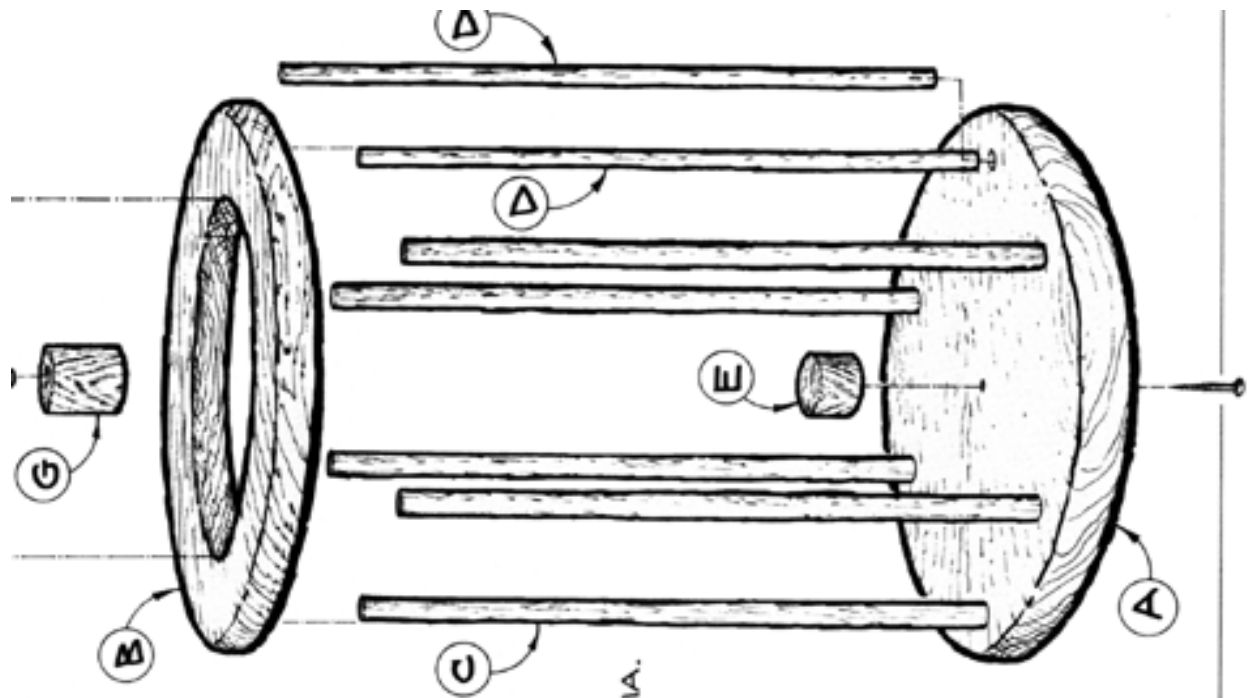


Paper Towel Holder Materials List

Part	Description	Size	No. Req'd
A	Base	9-3/4" dia. x 3/4" thick	1
B	Top	9-3/4" dia. x 3/4" thick	1
C	Stretcher Dowels	1/2" dia. x 12-1/8" long	5
D	Guide Dowels	3/8" dia. x 12-1/8" long	2
E	Base Pin	1-1/4" dia. x 3/4" long	1
F	Lid	7" dia. x 3/4" thick	1
G	Top Pin	1-1/4" dia. x 1-1/4" long	1
H	Dowel Pin	1/4" dia. x 2" long	1
I	Knob	See detail.	1

Paper Towel Holder Complete Schematic





Paper Towel Holder Step-by-Step Instructions

1. Edge joint sufficient 3/4" stock to be able to cut the circles of Parts A, B, and F.
2. Use a compass to scribe the three circles on the stock.
3. Use a band or jig saw to cut the circles.
4. Use double-faced tape to temporarily join Parts A and B.
5. Use a disc sander to true up the edges of Parts A and B.
6. Draw a concentric 8" diameter circle on the bottom of Part A.
7. Set a pair of dividers to the radius distance (4") to divide the circle into six equal arcs.
8. Start at the diameter line intersection and "walk" the dividers around the circle.
9. Use a drill press to drill 1/2" diameter holes 1-1/8" in depth at five of the six points on the circle. **Note: the holes should extend through Part A and 3/8" into Part B.**
10. Put a mark 1/4" to each side of the sixth point scribed on the circle.
11. Drill 3/8" diameter holes 1-1/8" deep at the two marks.
12. Separate Parts A and B.
13. Draw a 6-3/8" diameter concentric circle on Part B.
14. Use a jigsaw to cut out the circle on the inside of the scribed line.
15. True the edges of Part F.
16. Rout a 1/4" deep by 3/8" wide rabbet around the bottom of Part F so it will fit into the hole in Part B.
17. Use a router with a 1/4" rounding bit to round over the top edges of Parts A, B, and F.
18. Sand all three parts thoroughly.
19. Use a wood screw to attach Part E to the base.
20. Drill a 1/4" diameter hole through part F and 3/4" into Part G.
21. Insert Part H into the hole in Parts F and G and glue into Part G.
22. Purchase Part I and attach to part F via Part H.
23. Cut Parts C and D to size.
24. Sand all parts completely.
25. Glue Parts C and D into the base disc, making sure they are flush with the bottom.

26. Put a drop of glue on the top of each dowel and attach Part B. **NOTE: Use the glue sparingly and wipe off any excess immediately to avoid affecting the stain finish.**
27. Apply the stain of your choice.
28. Add a roll of paper towels, feeding the end through the two guide dowels (Parts D).

These plans were originally published in Volume 8, Issue 3 of *The Woodworker's Journal* (Jan/Feb 1984, pages 46-47).