



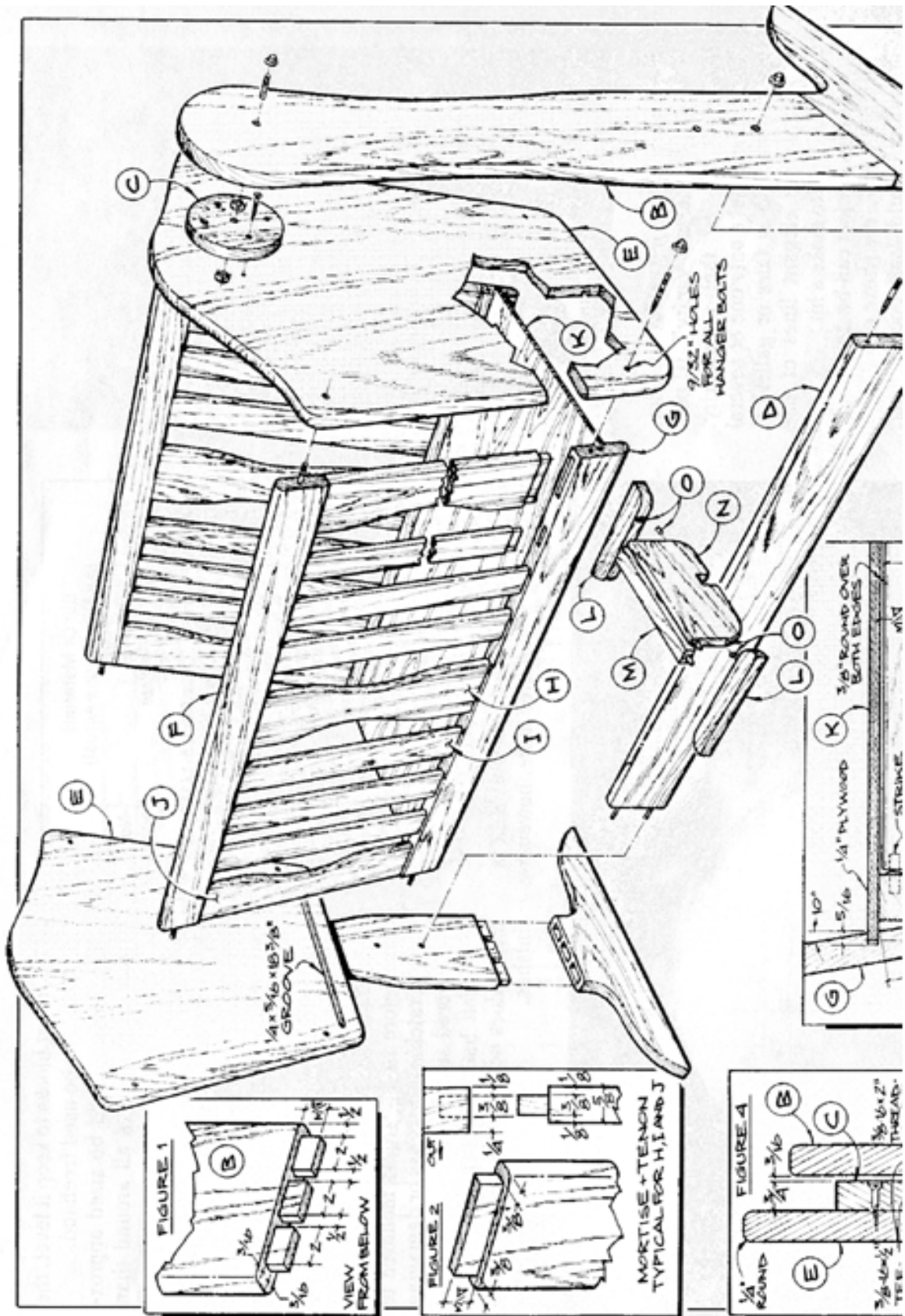
## Project 12020EZ: Cradle

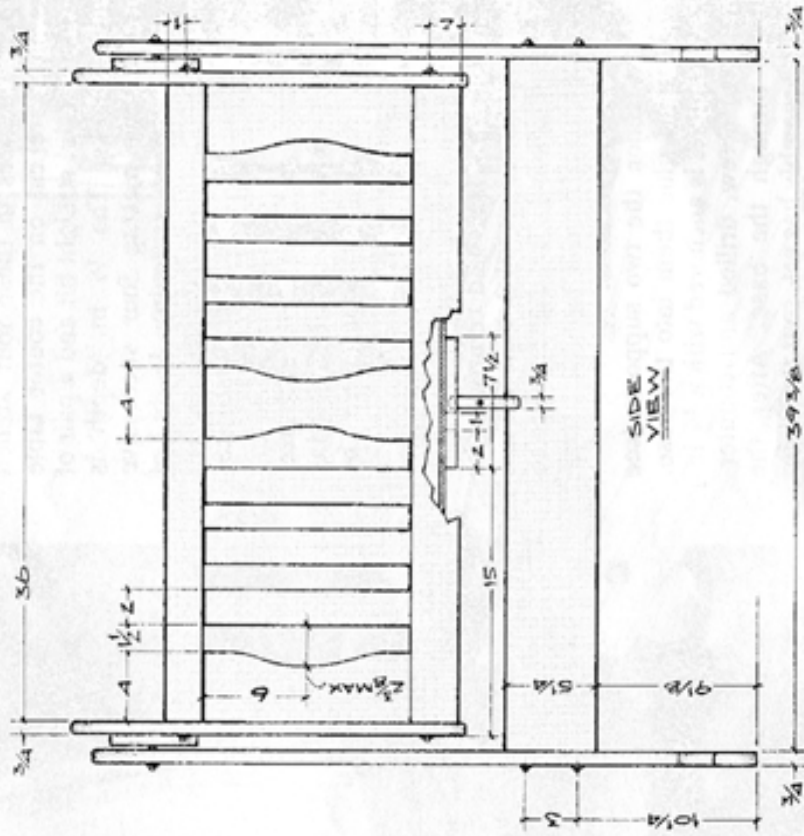
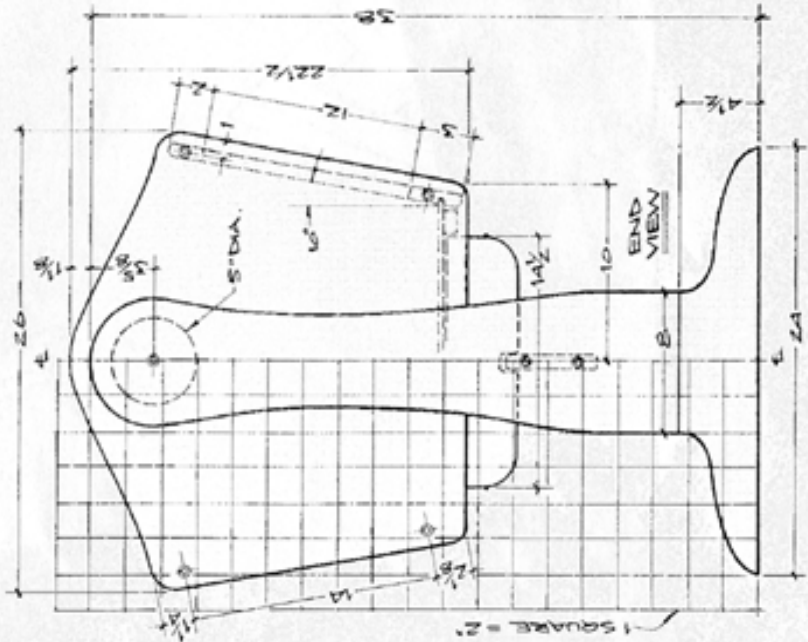
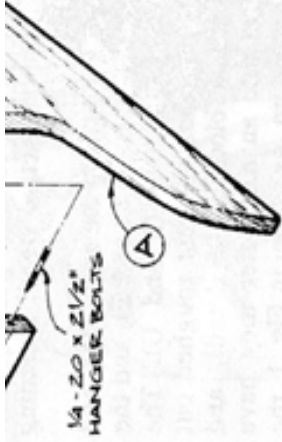
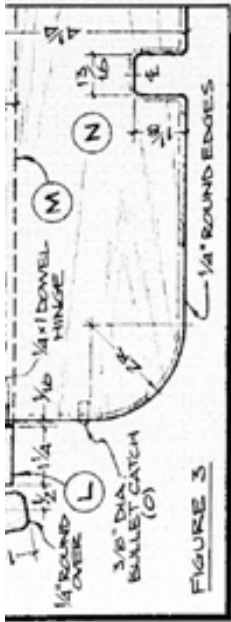
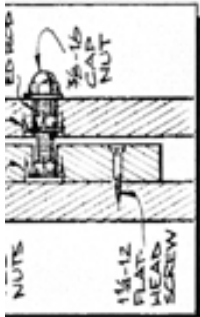
*This attractive cradle contains no T turnings, a feature that will mean any woodworker, not only those with lathes, can build it. The cradle swings easily on two pivots, has a locking mechanism, and can be disassembled for storage when it is no longer needed. The entire cradle, (excepting the plywood bottom), can be crafted from 3/4" hardwood stock. Although we used oak, cherry, maple, ash, or walnut would also be good choices.*

### Cradle Materials List

Part	Description	Size	No. Req'd
A	Feet	3/4" x 4-1/2" x 24"	2
B	Leg	3/4" x 8" x 34-1/4"	2
C	Spacer	3/4" x 5" dia.	2
D	Stretcher	3/4" x 5-1/4" x 39-3/8"	1
E	End	3/4" x 26" x 22-1/2"	2
F	Upper Rail	3/4" x 2" x 36"	2
G	Lower Rail	3/4" x 3" x 36"	2
H	Center Slat	5/8" x 4" x 13-1/2"*	2
I	Filler Slats	5/8" x 2" x 13-1/2"*	12
J	End Slats	5/8" x 4" x 13-1/2"*	4
K	Bottom	1/4" x 18-1/4" x 36-1/2"	1
L	Brake Mounts	3/4" x 1-1/4" x 7-1/2"	2
M	Cleat	3/4" x 1-1/4" x 14-5/8"	1
N	Brake	3/4" x 4-1/4" x 14-1/2"	1
O	Bullet Catch	3/8" dia.	2

# Cradle Complete Schematic





# Cradle Step-by-Step Instructions

1. Glue up 3/4" stock to make part E, which is 26" wide.
2. Cut the stock for parts A through N.
3. Plane the stock for the slats (H, I, and J) down to 5/8" thickness.
4. Refer to the grid pattern where necessary and use the band or saber saw to shape parts A, B, C, E, H, I, J, L, and N.
5. Tenon the legs as shown in Figure 1 and mortise the feet correspondingly.
6. Tenon the various slats and mortise the upper and lower rails to accept these tenons, as illustrated in Figure 2. NOTE: These slats should be flush with the inside edge of the rails, which will leave them recessed slightly in relation to the outside edge.
7. Cut the 1/4" wide grooves in the lower rails and ends to accept the 1/4" thick plywood bottom (K).
8. Glue up the two slat and rail side assemblies.
9. Assemble the locking mechanism (parts L, M, and N) with dowels, as shown in Figure 3.
10. Glue the mechanism the underside of the plywood bottom.
11. Mount the 3/8" diameter bullet catches (O) on both sides of locking mechanism. The locking pieces (N) pivots on two dowels, and when it is not being used, the bullet catches keep it out of the way.
12. Mount two short length of threaded rod in the tee-nuts to make the cradle's pivots, as shown in Figure 4.
13. Drill through the center of the round spacer.
14. Set the first tee-nut in place.
15. Fix the spacer to the end with four woodscrews.
16. Add the second tee-nut on the inside of the hole drilled through the leg.
17. Mount the cradle to the leg assembly with the short threaded rod, topped off with a cap nut.
18. Join both the cradle and leg assemblies hanger bolts and cap nuts to insure easy disassembly, and give the piece a nice finished look.
19. Generously round all exposed edges to eliminate any chance of accident or injury.
20. Sand, stain, and finish all component pieces.

---

These plans were originally published in Volume 9, Issue 3 of *The Woodworker's Journal* (May/June 1985, pages 46-47).