

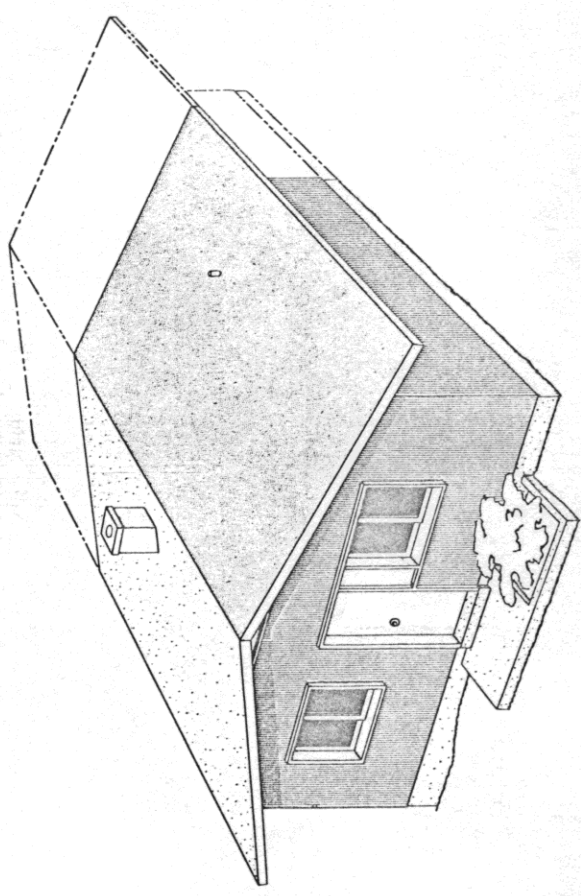
- WINDOW SCHEDULE**
- Ⓐ --- 4'-5" WIDE x 3'-5" HIGH
 - Ⓑ --- 3'-7" " x 2'-5" "
 - Ⓒ --- 4'-5" " x 1'-9" "
- DOOR SCHEDULE**
- ① --- 3'-0" x 6'-0" EXTERIOR
 - ② --- 2'-8" x 6'-8" "
 - ③ --- 2'-8" x 6'-8" INTERIOR
 - ④ --- 2'-6" x 6'-8" "

PACKAGED SLIDING WINDOWS. TYPE AND TRIM TO BE AS SELECTED BY OWNER.

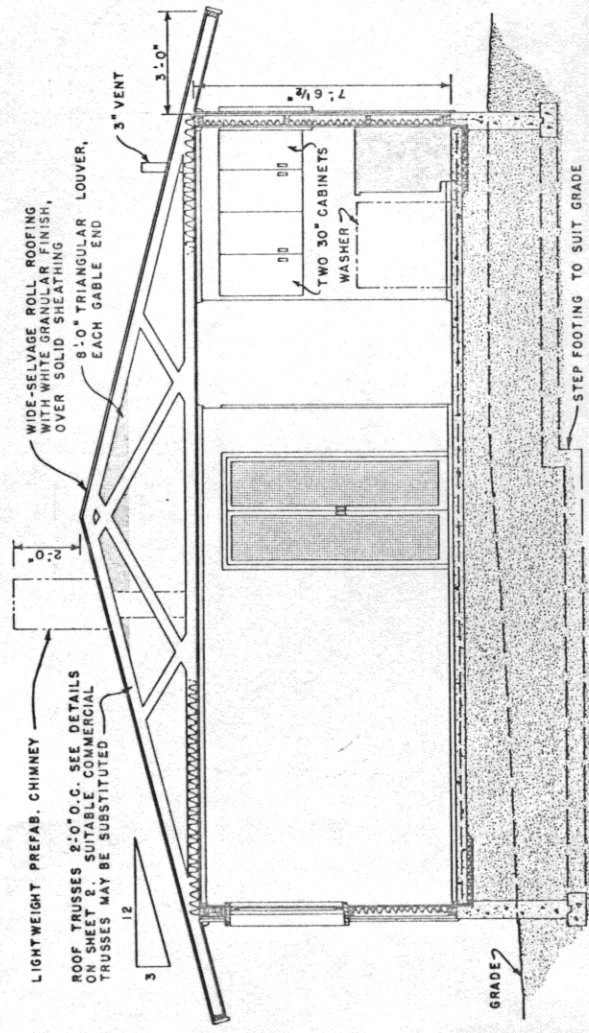
ELECTRICAL SYMBOLS

- S --- SWITCH
- Ⓜ --- THREE-WAY SWITCH
- Ⓞ --- CEILING FIXTURE, RECESSED
- Ⓢ --- WALL FIXTURE, PULL SWITCH
- Ⓡ --- FLOOD LIGHT
- Ⓛ --- DUPLEX CONVENIENCE OUTLET
- ⓐ --- DUP. CONV. OUTLET WITH GROUND
- ⓑ --- 230 VOLT, RANGE & WATER HEATER

COOPERATIVE EXTENSION WORK IN
 AGRICULTURE AND HOME ECONOMICS
 DEPARTMENT OF AGRICULTURAL ENGINEERING
 UNIVERSITY OF MARYLAND
 AND
 UNITED STATES DEPARTMENT OF AGRICULTURE COOPERATING
CABIN
 USDA '61 EX. 5928 SHEET 1 OF 3



PERSPECTIVE



LIGHTWEIGHT PREFAB. CHIMNEY
 ROOF TRUSSES 2'-0" O.C. SEE DETAILS ON SHEET 2. SUITABLE COMMERCIAL TRUSSES MAY BE SUBSTITUTED
 WIDE-SELVAGE ROLL ROOFING WITH WHITE GRANULAR FINISH, OVER SOLID SHEATHING
 8'-0" TRIANGULAR LOUVER, EACH GABLE END
 3" VENT
 TWO 30" CABINETS
 WASHER
 7'-6 1/2"
 STEP FOOTING TO SUIT GRADE

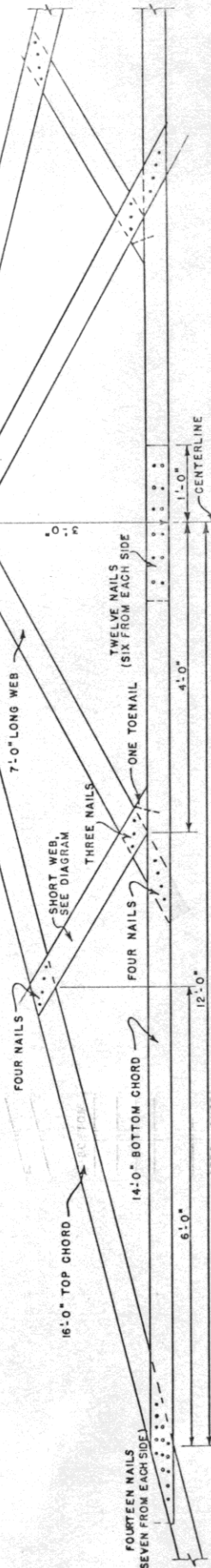
SECTION A-A

FOR ECONOMY AND EASE OF CONSTRUCTION, APPLY THE INTERIOR WALL, CEILING AND FLOOR FINISH BEFORE ERECTING ANY PARTITIONS. THIS WILL ALSO PERMIT FUTURE REMOVAL OR MOVING OF ANY PARTITIONS EXCEPT THOSE WHICH CONTAIN PLUMBING.

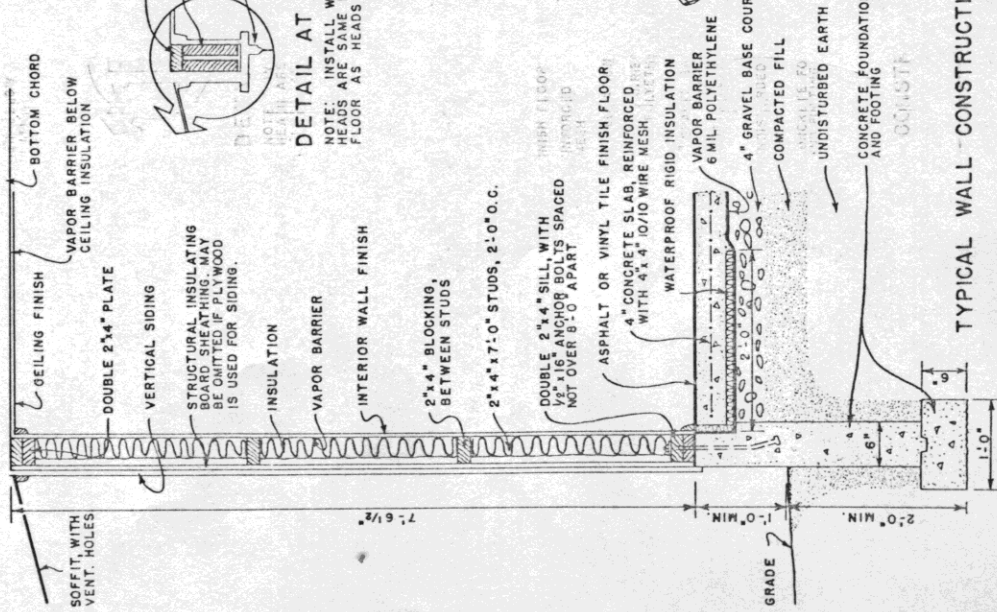
THE FINISH GRADE SHOULD SLOPE AWAY FROM THE CABIN ON ALL SIDES.



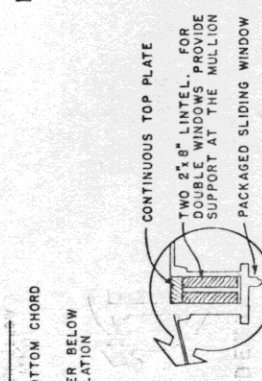
CUTTING DIAGRAM FOR SHORT WEBS
CHECK ANGLE ON THE JOB. ALL OTHER CUTS ARE MADE AFTER THE TRUSS IS ASSEMBLED.



LAYOUT & FASTENING DETAILS



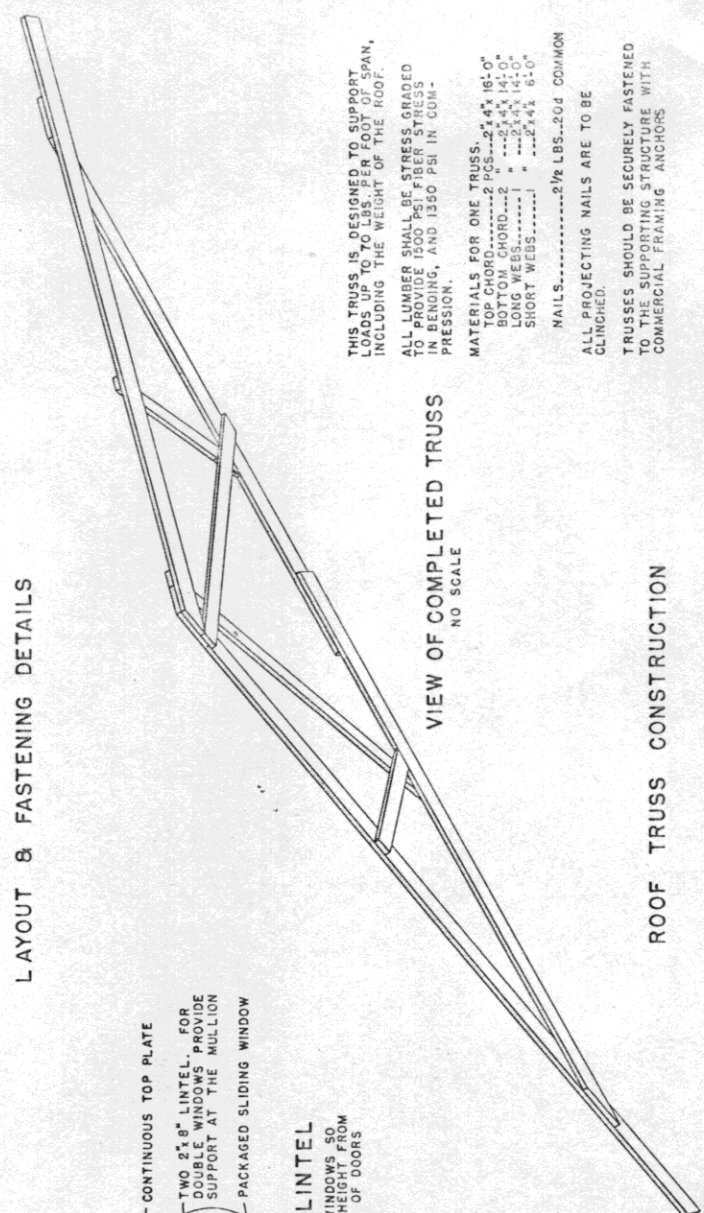
TYPICAL WALL CONSTRUCTION



DETAIL AT LINTEL
NOTE: INSTALL WINDOWS SO NAILS ARE SAME TO FORM FLOOR AS HEADS OF DOORS

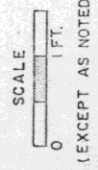
CONTINUOUS TOP PLATE
TWO 2x8 LINTEL FOR DOUBLE WINDOWS PROVIDE SUPPORT AT THE MULLION
PACKAGED SLIDING WINDOW

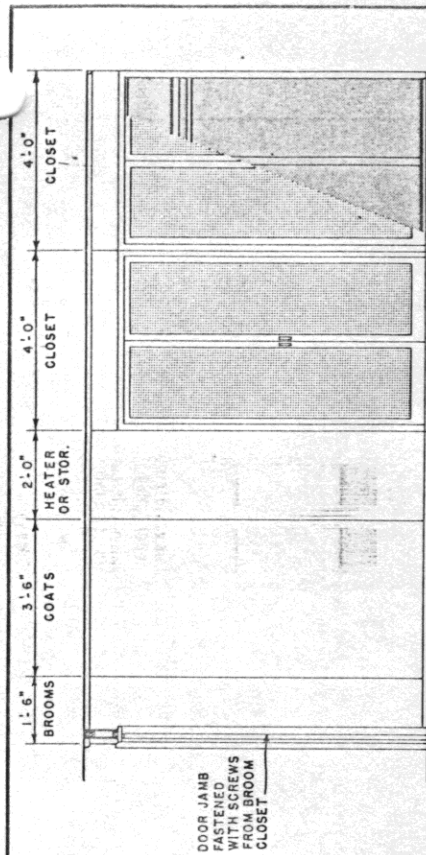
VIEW OF COMPLETED TRUSS
NO SCALE



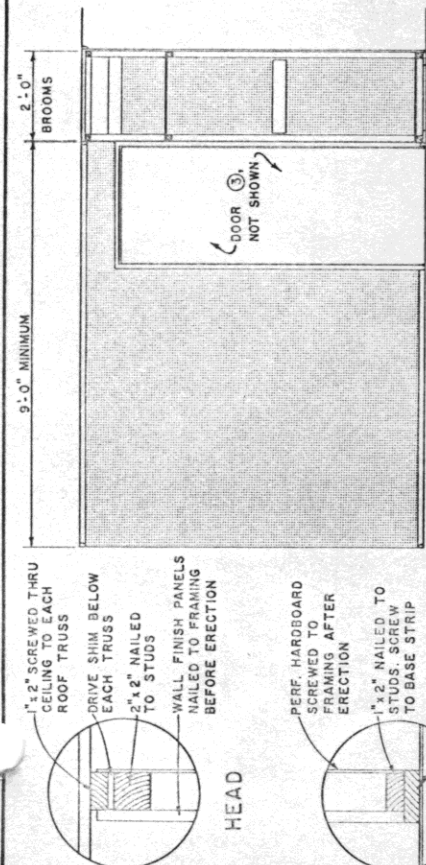
ROOF TRUSS CONSTRUCTION

THIS TRUSS IS DESIGNED TO SUPPORT LOADS UP TO 70 LBS. PER FOOT OF SPAN, INCLUDING THE WEIGHT OF THE ROOF.
ALL LUMBER SHALL BE STRESS GRADED TO PROVIDE 1500 PSI FIBER STRESS IN BENDING, AND 1350 PSI IN COMPRESSION.
MATERIALS FOR ONE TRUSS:
TOP CHORD.....2 2x8s.....2x 16'-0"
BOTTOM CHORD.....2 2x8s.....2x 16'-0"
LONG WEBS.....2 2x4s.....2x 14'-0"
SHORT WEBS.....1 2x4x 6'-0"
NAILS.....2 1/2 LBS.....204 COMMON
ALL PROJECTING NAILS ARE TO BE CLINCHED.
TRUSSES SHOULD BE SECURELY FASTENED TO THE SUPPORTING STRUCTURE WITH COMMERCIAL FRAMING ANCHORS



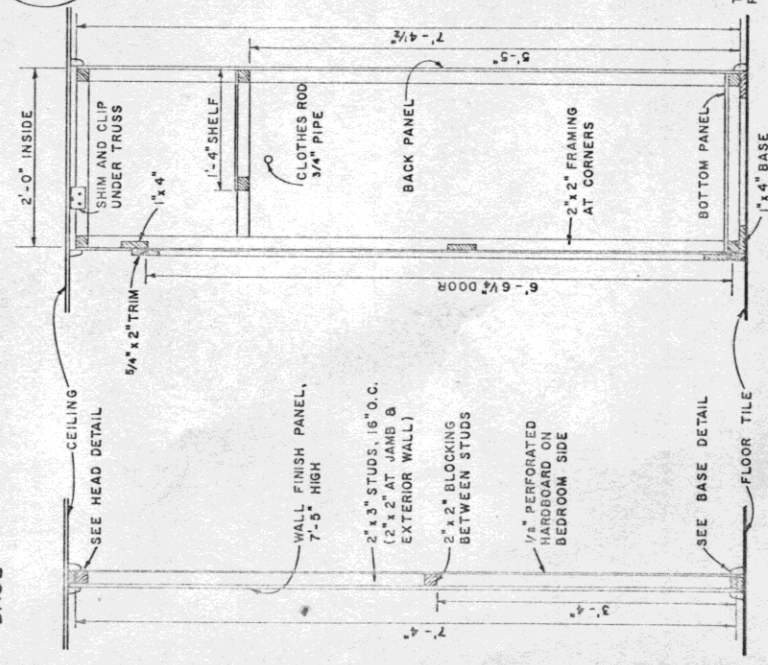


ELEVATION, CUT AWAY TO SHOW INTERIOR STORAGE PARTITION



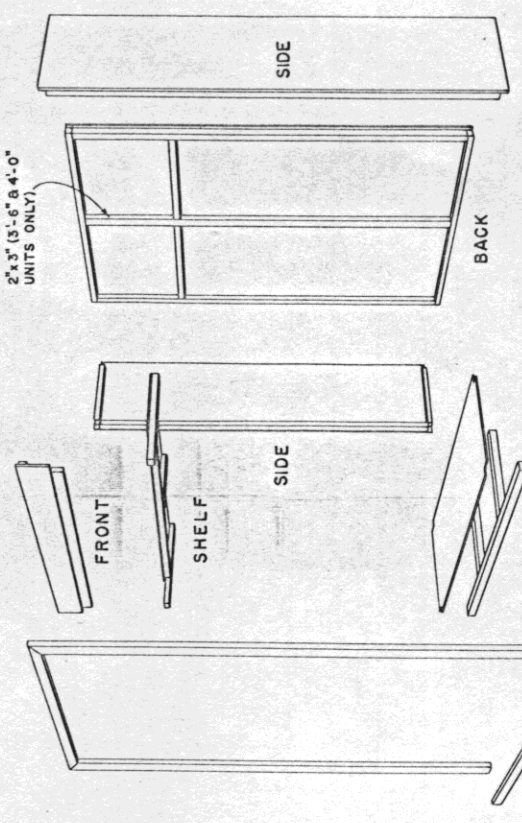
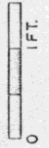
SECTION

ELEVATION PARTITION



STORAGE PARTITION

TYPICAL CROSS SECTIONS



EXPLODED VIEW OF TYPICAL CLOSET UNIT SHOWING COMPONENTS READY FOR ASSEMBLY

THESE BEDROOM PARTITIONS ARE DESIGNED TO PERMIT FUTURE REARRANGEMENT OR REMOVAL. THE STORAGE PARTITION IS MADE UP OF INDIVIDUAL CLOSET UNITS WHICH ARE SUPPORTED ON CONTINUOUS 1"x4" BOARDS WHICH SERVE TO PROTECT THE FINISH FLOOR TILE JOINTS AT THE FLOOR AND CEILING ARE COVERED BY TRIM. USE OF VERTICALLY GROOVED PLYWOOD OR HARDBOARD PANELS WILL AID IN CONCEALING THE JOINTS BETWEEN UNITS. ALL FRAMING IS 2"x2" EXCEPT AS NOTED.

CLOSET DOORS SHOULD HAVE MAGNETIC LATCHES AT TOP AND BOTTOM.

PERFORATED HARDBOARD IS USED ON CLOSET DOORS FOR VENTILATION AND ON THE OTHER PARTITION FOR TEXTURE AND TO PERMIT HANGING LIGHT SHELVES, ETC., ON COMMERCIAL BRACKETS.

CONSTRUCTION OF HEATER ENCLOSURE WILL DEPEND ON THE TYPE OF HEATING UNIT TO BE INSTALLED.

COOPERATIVE EXTENSION WORK IN AGRICULTURE AND HOME ECONOMICS
DEPARTMENT OF AGRICULTURAL ENGINEERING
UNIVERSITY OF MARYLAND
AND
UNITED STATES DEPARTMENT OF AGRICULTURE COOPERATING

CABIN

USDA '61 EX. 5928 SHEET 3 OF 3