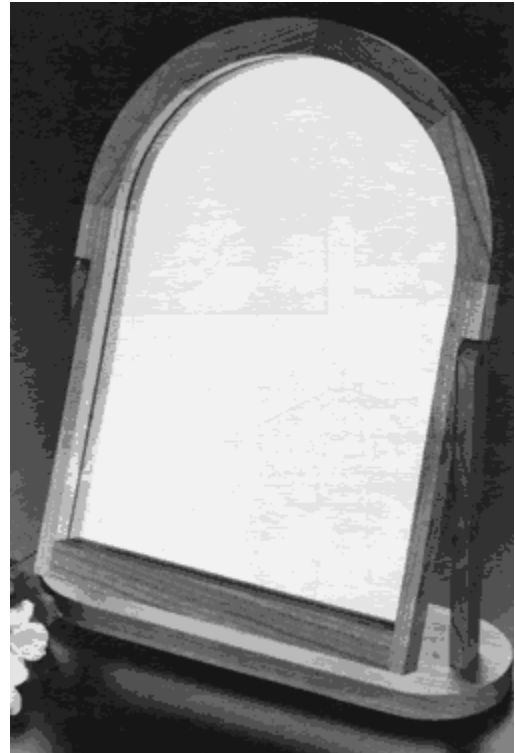


Project 15830EZ: Vanity Mirror

Mirrors are a perennial favorite, and the term “vanity” is perhaps the key to their popularity. Whether you make only one or several hundred for sale at fairs or galleries, the simple yet elegant lines of this piece are likely to make a hit. The entire project can be made from 1" thick stock. We chose cherry, but the mirror would look good in just about any attractive wood, including pine.



Vanity Mirror Materials List

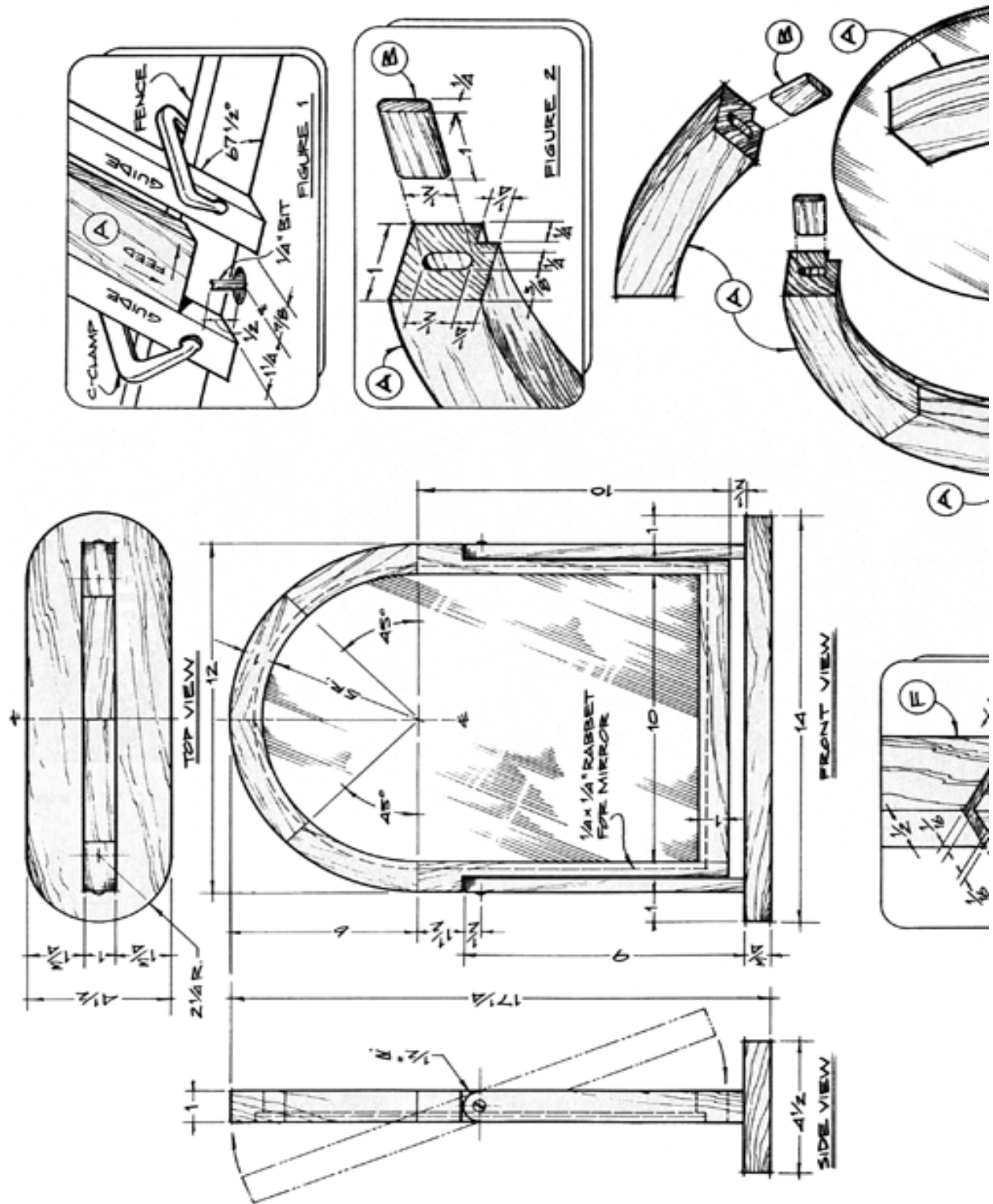
Part Req'd	Description	Size	No.
A	Arch Sections	1" x 1-3/4" x 5-1/16"	4
B	Long Spline	1/4" x 1/2" x 1"	5
C	Side Sections	1" x 1" x 10"	2
D	Short Spline	1/4" x 1/2" x 3/4"	1
E	Bottom Section	1" x 1" x 10"	1
F	Supports	1/2" x 1" x 9-1/2"	2
G	Base	3/4" x 4-1/2" x 14"	1
H	Mirror	10-1/2" x 14-1/2"	1

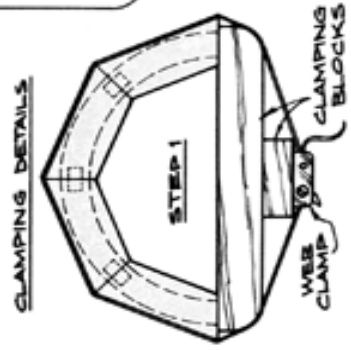
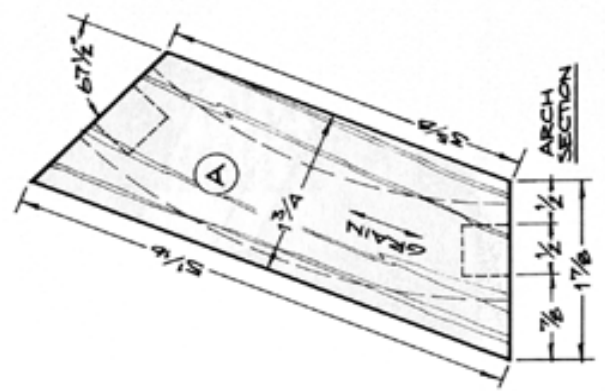
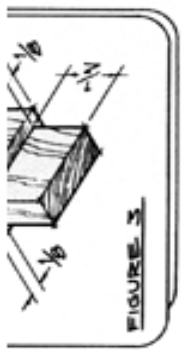
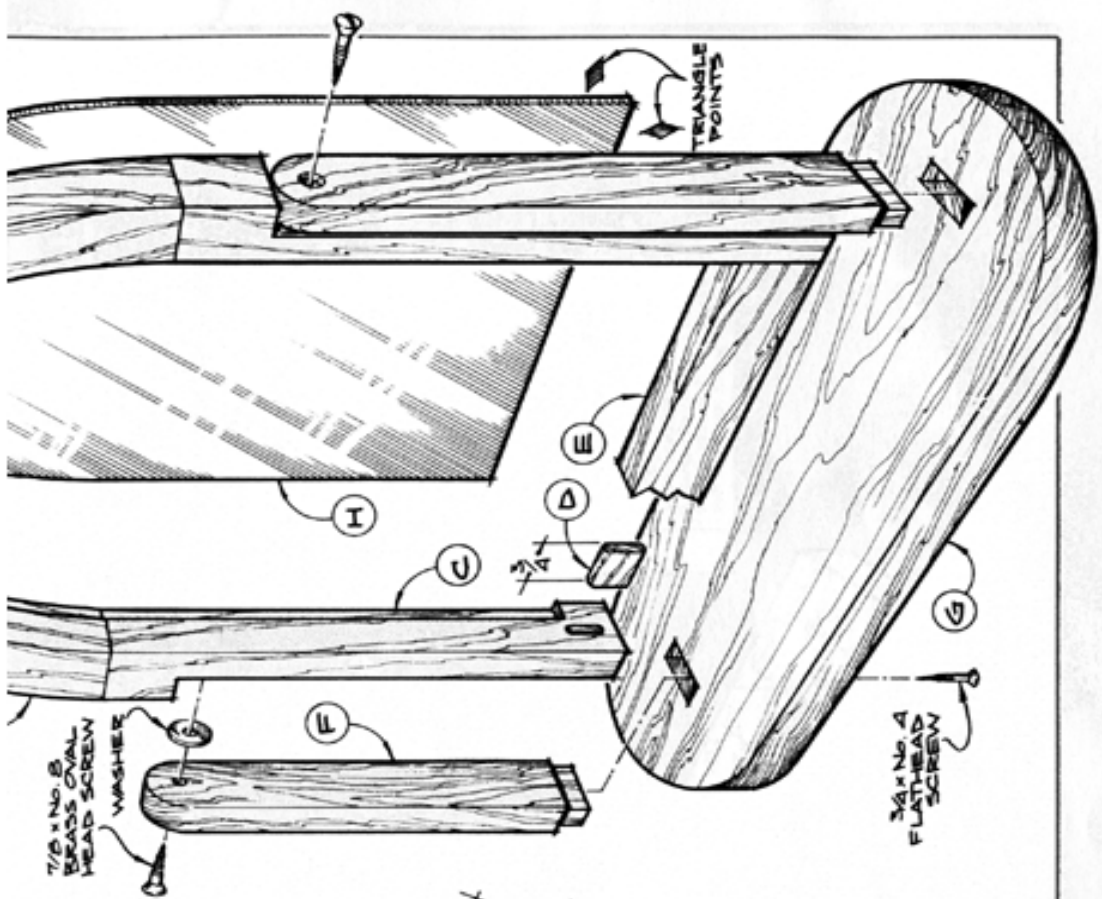
*Rough size of mitered sections before glue-up and shaping.

**Includes tenon.

***Have mirror cut approximately 1/16" less than the actual dimensions.

Vanity Mirror Complete Schematic





Vanity Mirror Step-by-Step Instructions

1. Cut Parts A, C, E, F, and G to size.
2. Use a router table with a 1/4" straight bit and a pair of guide blocks to cut the spline mortises in Parts A (Fig. 1).
3. Make four successive cuts each one removing 1/8" of material, to achieve the 1/2" depth of the mortises.
4. Round the hardwood splines (Parts B) to fit the routed mortises (Fig. 2).
5. Assemble the arch sections as illustrated in step 1.
6. Attach Parts C to Part E using a bar or pipe clamp to apply pressure.
7. Use a band or saber saw to shape the arch.
8. Complete the frame as shown in step 2 using the correct clamps.
9. Sand the arch to smooth the transition to the side sections.
10. Tenon Parts F (Fig. 3) and glue them into the base (Part G).
11. Use a 3/4" flat head screw, drilled and counter-bored, to anchor Parts F to Part G.
12. Use the router table to rout the 1/4" by 1/4" rabbet around the inner edge of the back that will hold the mirror.
13. Use brass oval head screws to attach the mirror frame to the supports, enabling the mirror to pivot.
14. Rub in several coats of tung oil, buffing the frame and base with 0000 steel wool between coats.
15. Mount the mirror in the frame with triangle points.
16. Glue felt to the bottom of the base.

These plans were originally published in Volume 9, Issue 3 of *The Woodworker's Journal* (May/June 1985, pages 48-49).