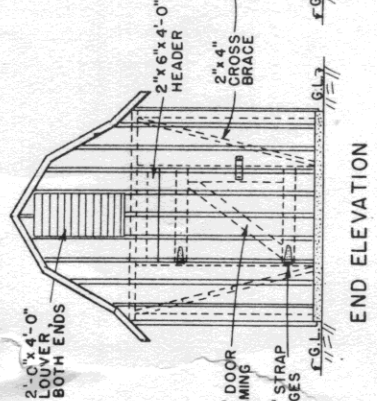
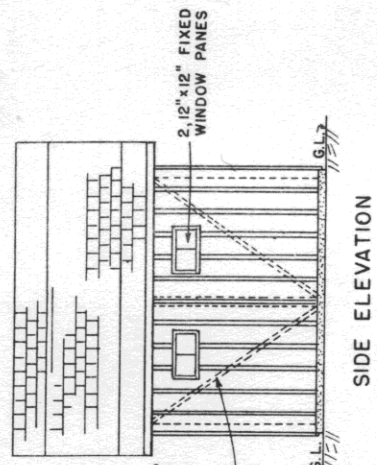


V.P.I. PLAN N-1.06

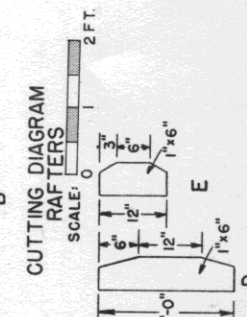
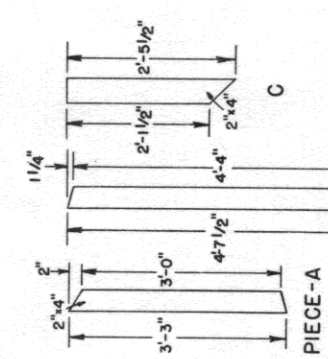


SIDE ELEVATION

END ELEVATION

BILL OF MATERIALS

- 4 - 2" x 4" x 8' Treated
- 4 - 2" x 4" x 12' Treated
- 2 - 2" x 6" x 10' Treated
- 2 - 2" x 6" x 12' Treated
- 18 - 2" x 4" x 8'
- 10 - 2" x 4" x 10'
- 10 - 2" x 4" x 12'
- 5 - 2" x 6" x 10'
- 5 - 2" x 6" x 12'
- 8 - 1" x 6" x 10'
- 2 - 1" x 6" x 12'
- 24 - 1" x 12" x 8'
- 4 - 1" x 12" x 10'
- 8 - 1" x 12" x 12'
- 8 - 1" x 12" x 14'
- 500 lbs. ft. 1" x 5" Battens
- 2 1/2 yds. 5 bag mix concrete
- 500 sq. ft. 1" sheathing
- 5 squares asphalt building paper
- 5 squares 25# asphalt shingles
- 8 - 12" x 12" window panes
- 64 lin. ft. quarter-round
- 2 sets 2 ea. 3" x 3" strap hinges
- 2 with screws
- 12 - 1/2" x 3" x 3" screws
- 180 ea. 1/2" x 3" x 3" screws
- 31/2 20d nails
- 16/8 8d nails



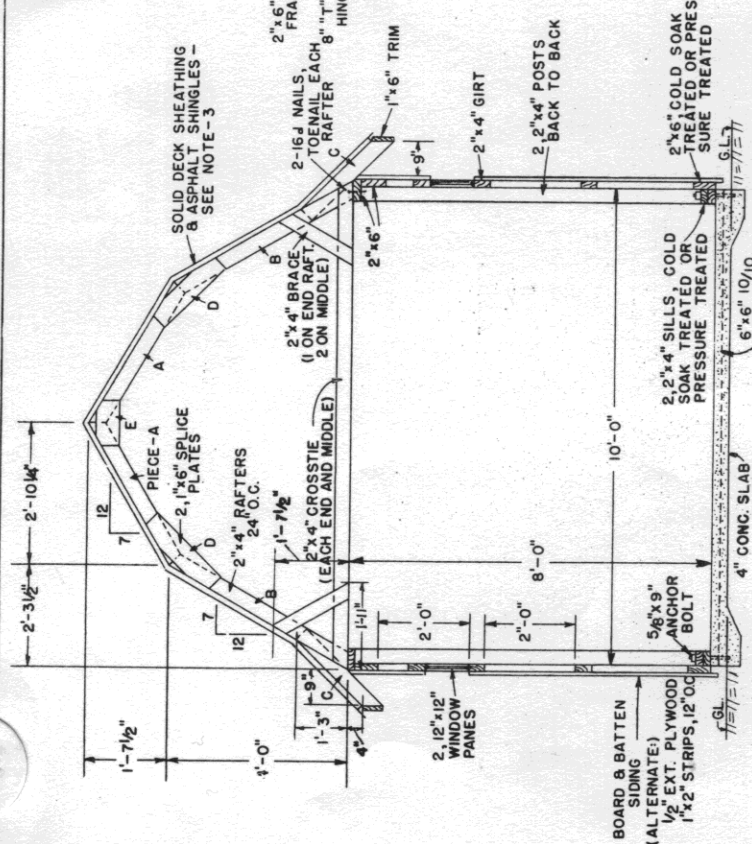
CUTTING DIAGRAM RAFTERS

CUTTING DIAGRAM SPLICE PLATES

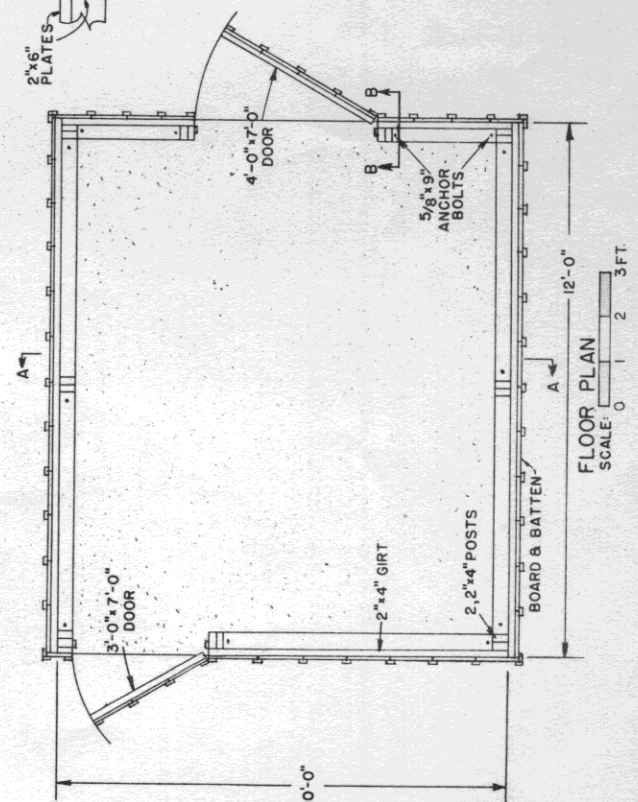
SCALE: 0 2 FT.

SCALE: 0 2 FT.

- NOTES:
1. 1"x6" SPLICE PLATE ON ONE SIDE ONLY ON END RAFTERS.
 2. 2"x4" CROSSIE ON EACH END AND ON CENTER RAFTER.
 3. SOLID DECK SHEATHING, 1" BOARDS 14'-0" LONG, 12" OVERHANG. 25# ASPHALT SHINGLES OVER ASPHALT BUILDING PAPER. ALT. #8 PLYWOOD SHEATHING.



SECTION A-A



FLOOR PLAN

SCALE: 0 2 3 FT.