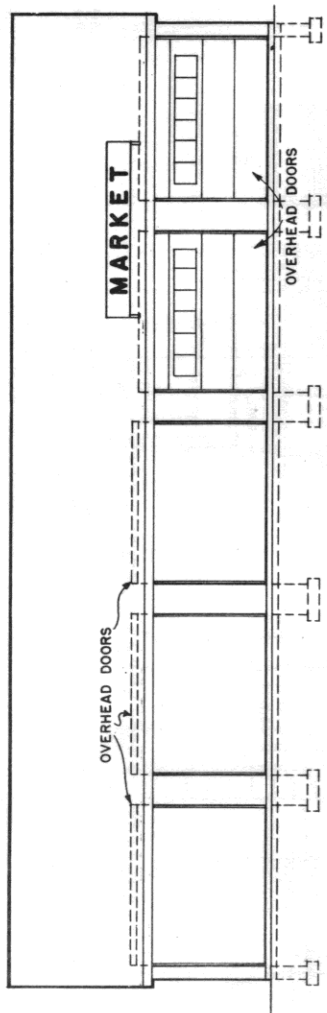
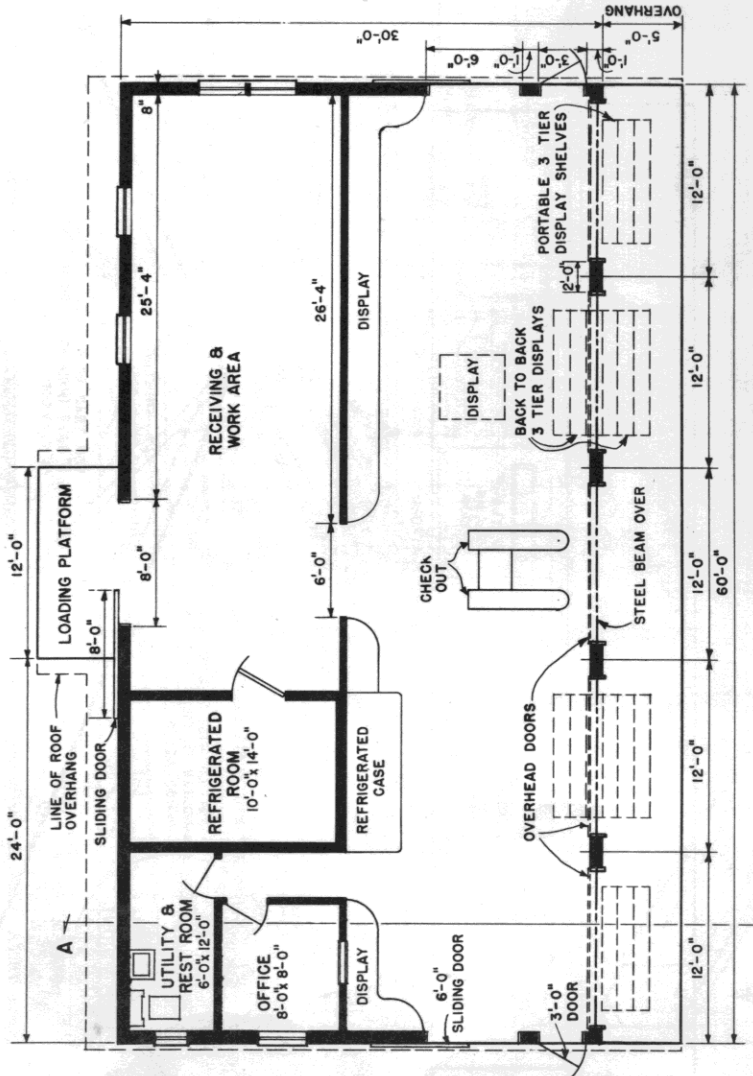


**RIGHT SIDE ELEVATION**  
0 2 4 6 8 FT.

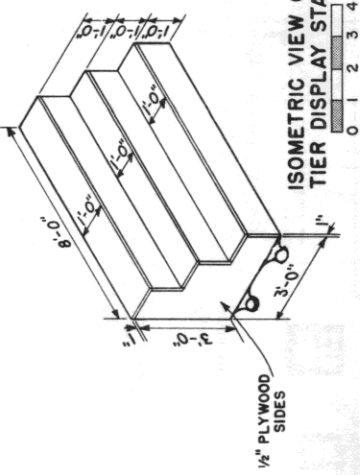


**FRONT ELEVATION**  
0 2 4 6 8 FT.



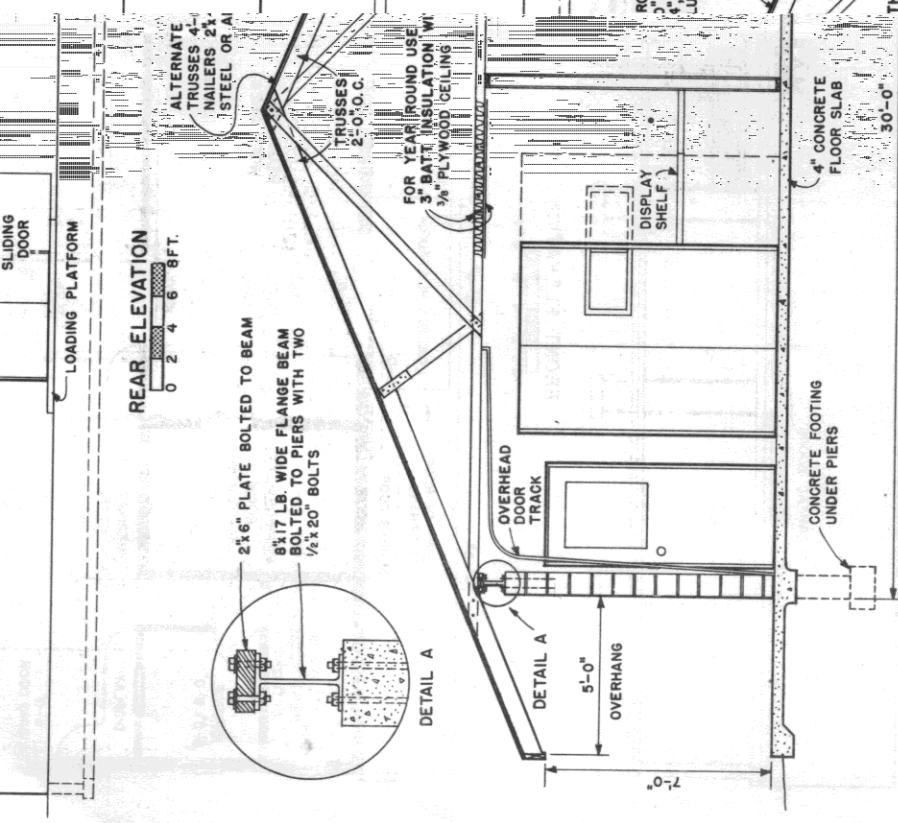
**PLAN**  
0 2 4 6 8 FT.

NOTE: DIMENSIONS SHOWN ARE NOMINAL,  
1X12 LUMBER MAY BE USED.

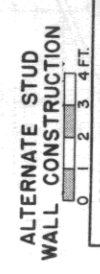
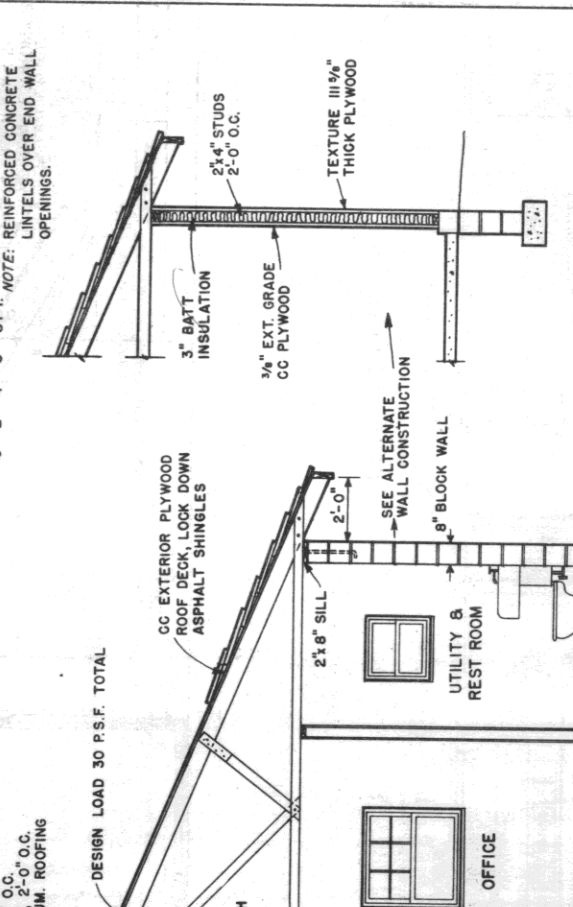
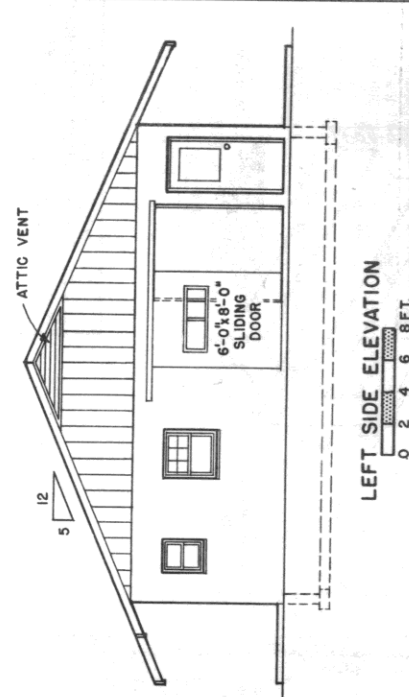


**ISOMETRIC VIEW OF 3  
TIER DISPLAY STANDS**  
0 1 2 3 4 FT.

COOPERATIVE EXTENSION WORK IN AGRICULTURE AND HOME ECONOMICS DEPARTMENT OF AGRICULTURAL ENGINEERING UNIVERSITY OF MARYLAND AND UNITED STATES DEPARTMENT OF AGRICULTURE COOPERATING	
<b>ROADSIDE MARKET</b>	
M.J. '67	EX. 6027
SHEET 1 OF 3	

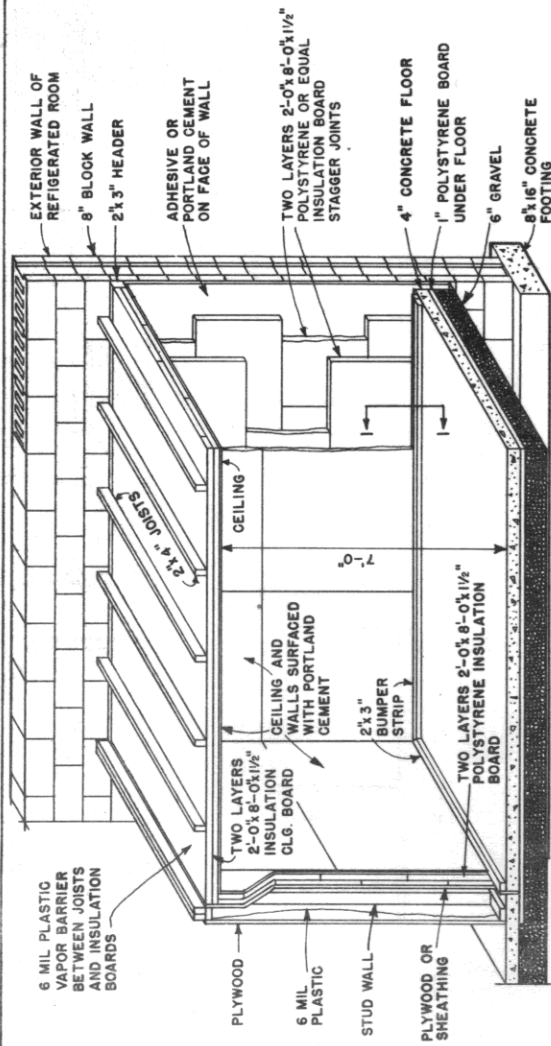


NOTE: PIERS ARE CAST CONCRETE OR PLASTER BLOCKS WITH CORES FILLED. REINFORCE WITH TWO 1/2" RODS WHICH EXTEND INTO FOOTING.



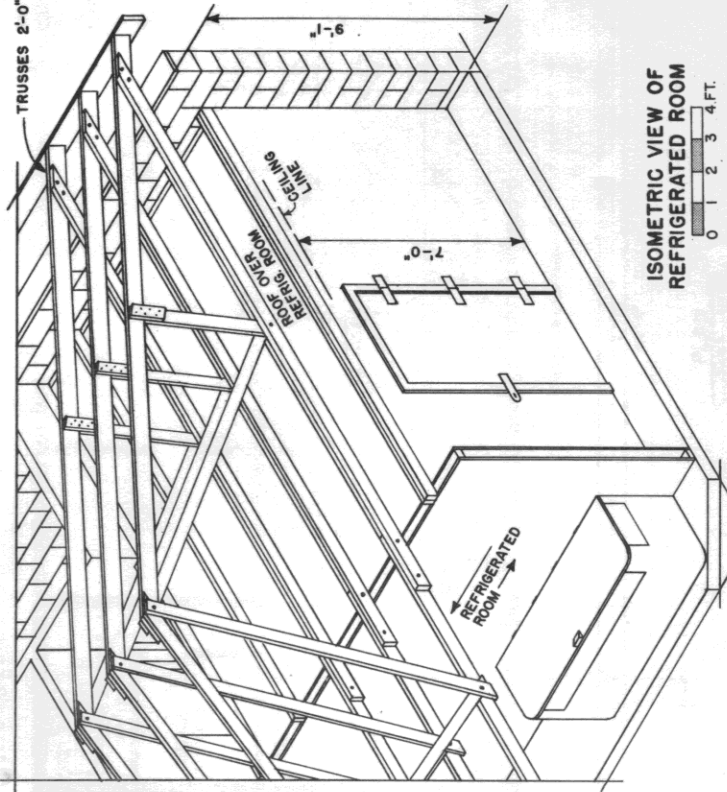
COOPERATIVE EXTENSION WORK IN AGRICULTURE AND HOME ECONOMICS  
 DEPARTMENT OF AGRICULTURAL ENGINEERING  
 UNIVERSITY OF MARYLAND  
 AND  
 UNITED STATES DEPARTMENT OF AGRICULTURE COOPERATING

ROADSIDE MARKET  
 N.J. '67 EX. 6027 SHEET 2 OF 3



CUT AWAY VIEW THROUGH REFRIGERATED ROOM

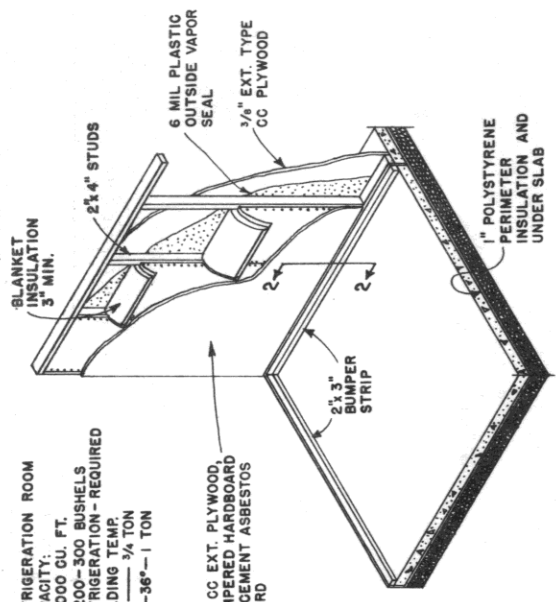
0 1 2 3 FT.



ISOMETRIC VIEW OF REFRIGERATED ROOM

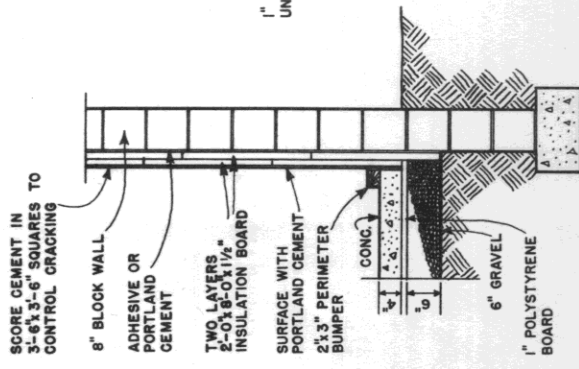
0 1 2 3 4 FT.

NOTE: REFRIGERATION ROOM CAPACITY: 1000 CU. FT. 200-300 BUSHELS REFRIGERATION - REQUIRED HOLDING TEMP. 55° - 3/4 TON 32°-36° - 1 TON



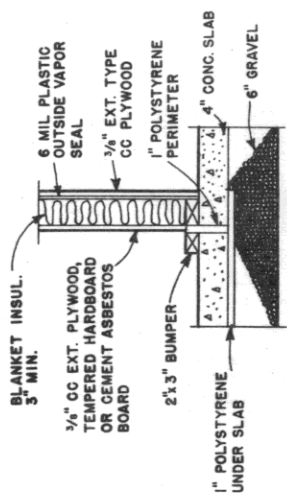
ALTERNATE VIEW THROUGH STUD WALL CONSTRUCTION

0 1 2 3 4 FT.



SECTION 1-1

0 1 2 FT.



SECTION 2-2

0 1 FT.