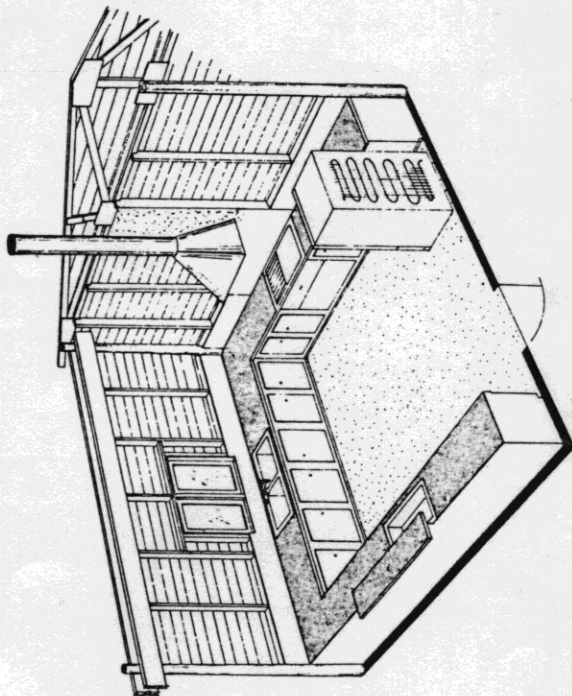


PERSPECTIVE



KITCHEN - CUTAWAY VIEW

NOTE:

1. ALL WOODEN MEMBERS IN CONTACT WITH GROUND SHALL BE PRESERVATIVE PRESSURE TREATED (P.P.T.)
2. SIDEWALL CONSTRUCTION DETAILS FOR HORIZONTAL SIDING ARE SHOWN. FOR VERTICAL SIDING USE TYPICAL POLE BUILDING SIDEWALL CONSTRUCTION.
3. PROVISIONS SHOULD BE MADE FOR SHUTTING OFF WATER AND DRAINING ALL LINES IN PAVILION.

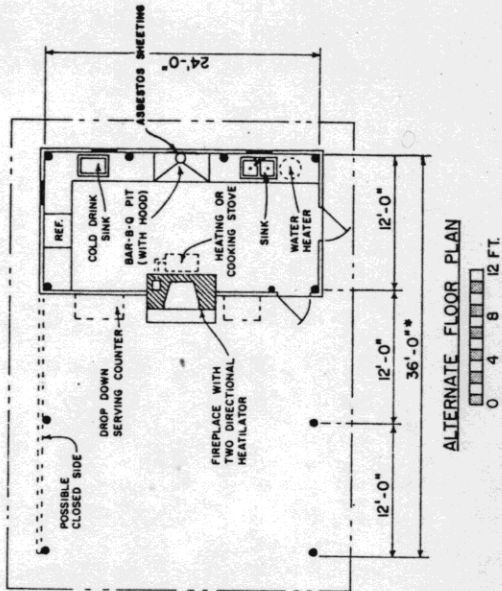
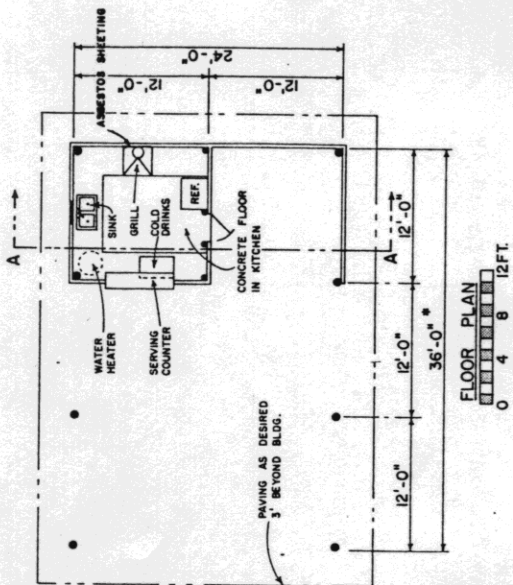
DESIGNED BY:
 H. R. DAVIS
 E. W. FOSS
 W. W. IRISH
 CORNELL UNIV. PLAN NO. 830

COOPERATIVE EXTENSION WORK IN
 AGRICULTURE AND HOME ECONOMICS
 DEPARTMENT OF AGRICULTURAL ENGINEERING
 UNIVERSITY OF MARYLAND
 AND
 UNITED STATES DEPARTMENT OF AGRICULTURE COOPERATING

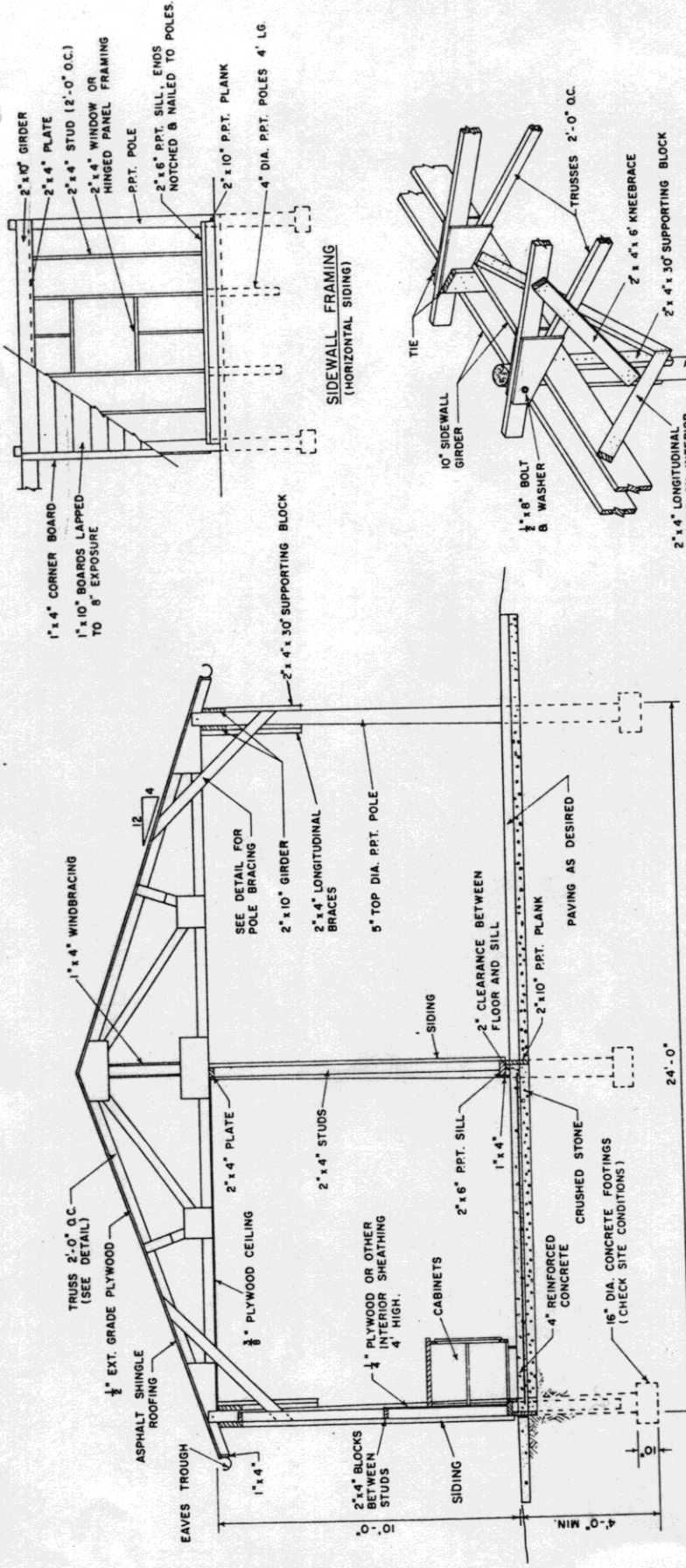
PAVILION WITH KITCHEN

N.Y. '69 6079 SHEET 1 OF 2

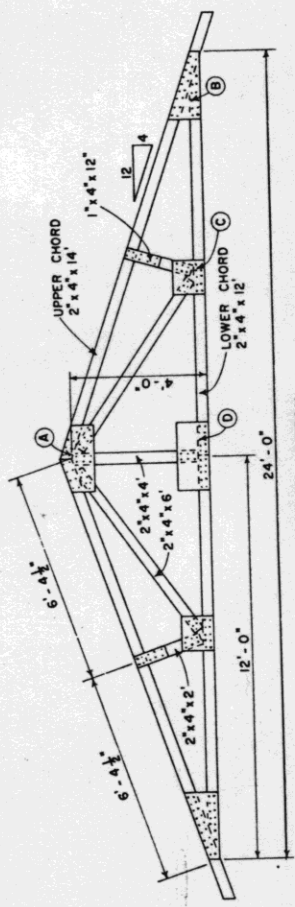
* LENGTH OF BLDG. MAY BE EXTENDED IN 12' UNITS.



ALTERNATE FLOOR PLAN

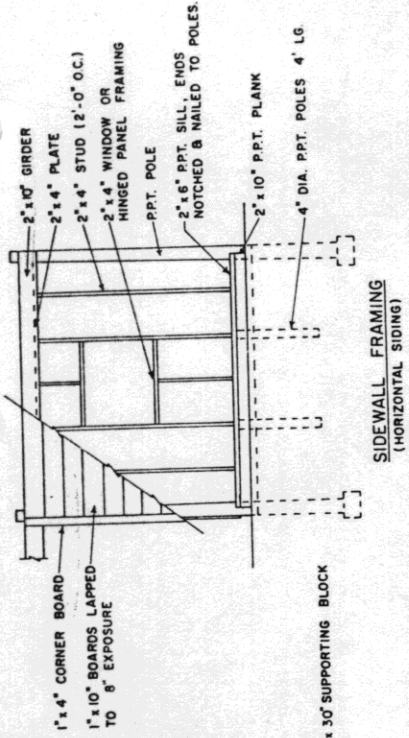


CROSS SECTION A-A
0 1 2 3 4 FT.

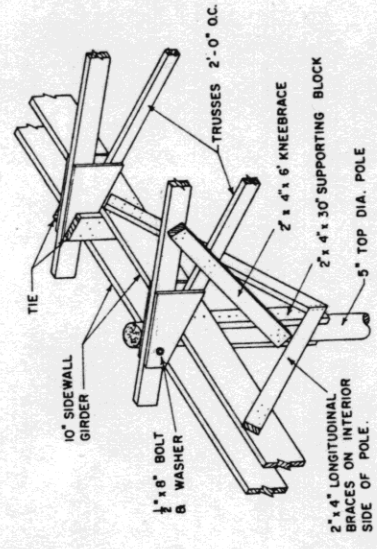


TRUSS DETAIL
0 1 2 3 4 FT.

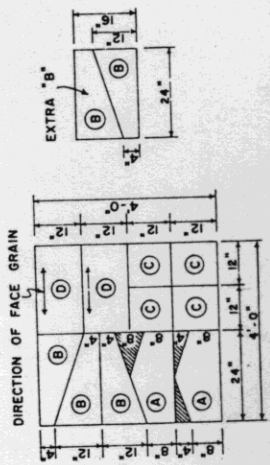
- NOTE:
1. ALL GUSSET PLATES ARE GLUED & NAILED ON BOTH SIDES OF TRUSS. USE RESORCINOL GLUE & 6d BOX NAILS.
 2. TRUSS DESIGNED FOR LOADS OF 30 P.S.F. AT 2'-0" O.C.
 3. ALL LUMBER SHALL BE STRESS GRADED TO PROVIDE 1500 P.S.I. FIBER STRESS IN BENDING & 1350 P.S.I. IN COMPRESSION.



SIDEWALL FRAMING
(HORIZONTAL SIDING)



TRUSS ANCHORAGE & POLE BRACING



GUSSET PLATES - CUTTING DIAGRAM

1/2\"/>