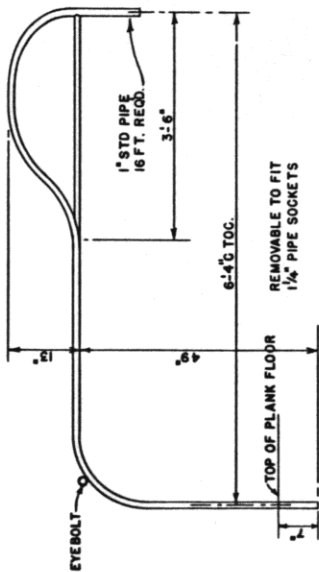
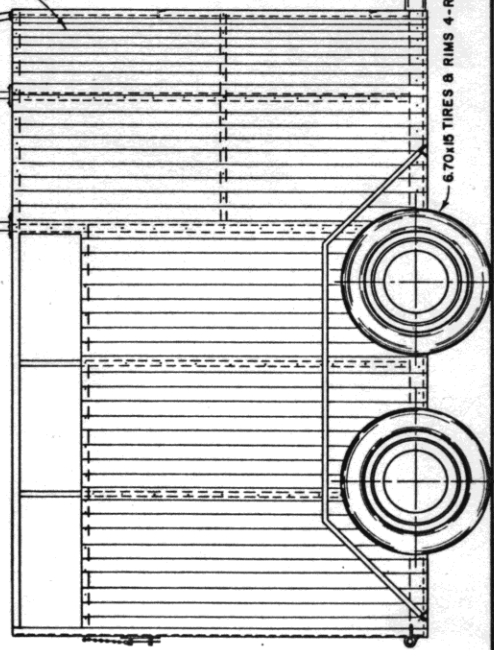


FENDER 2-REOD
SCALE: 0 1 FT.



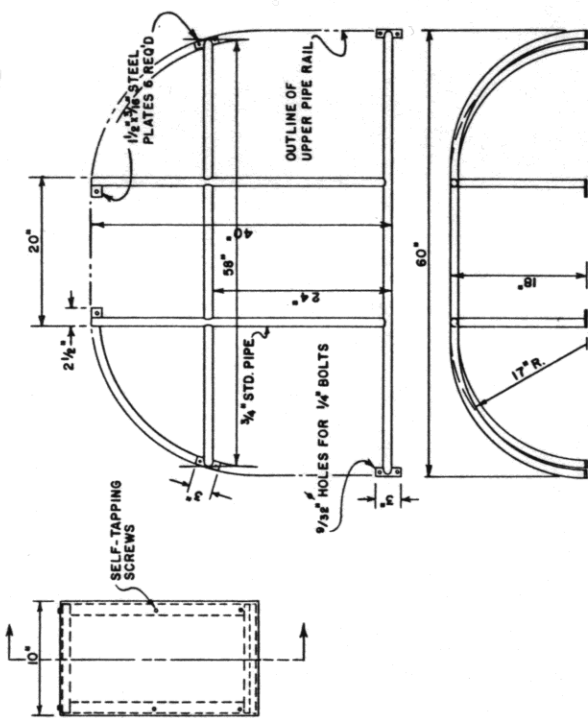
SEPARATOR 1-REOD
SCALE: 0 2 FT. CANOPY FRAME

NOTE:
CANOPY FRAME TO BE COVERED WITH CANVAS

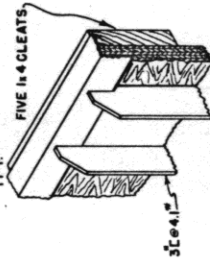


NOTE:
CORRUGATED FILLER STRIP TO BE USED BETWEEN FENDERS AND BOOT OF TRAILER. FASTEN FENDER TO FRAME OF TRAILER WITH 3/16\"/>

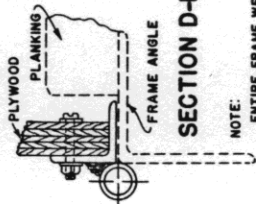
SIDE ELEVATION OF TRAILER
FLOOR TO BE 2\"/>



CANOPY FRAME 1-REOD
SCALE: 0 1 FT.

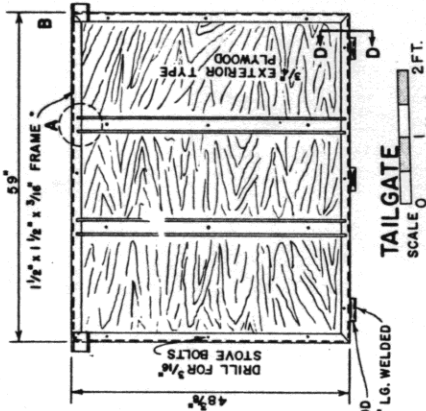


DETAIL A

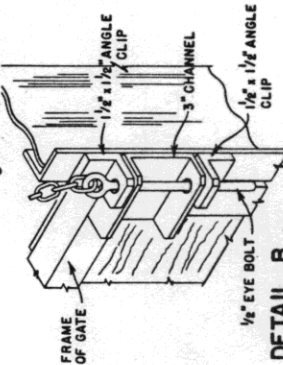


SECTION D-D

NOTE:
ENTIRE FRAME WELDED



TAILGATE
SCALE: 0 2 FT.

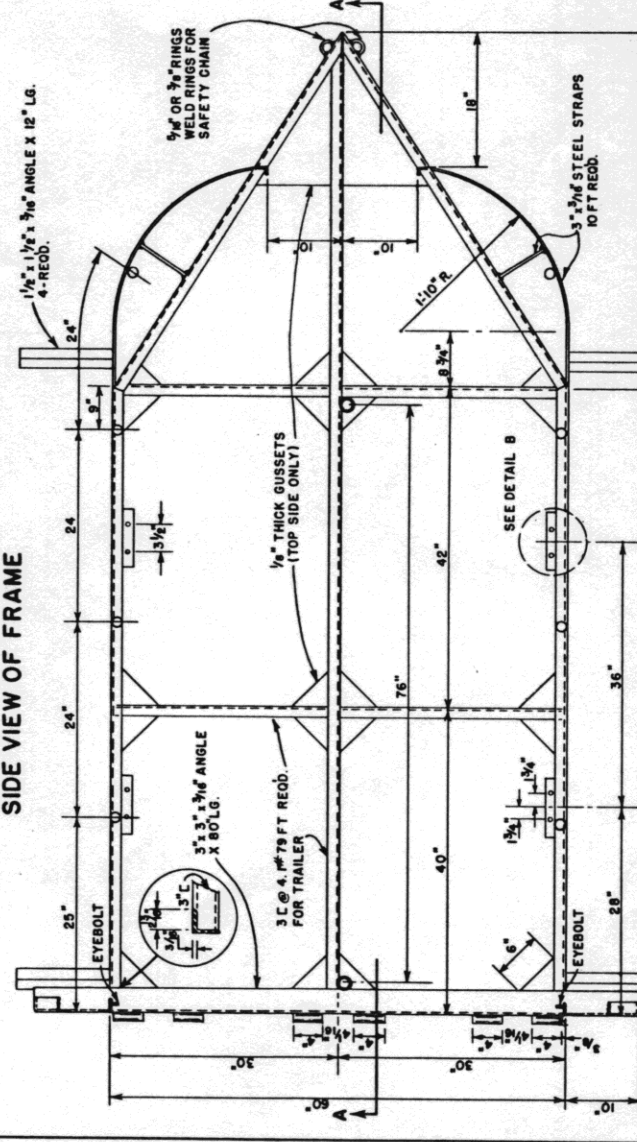
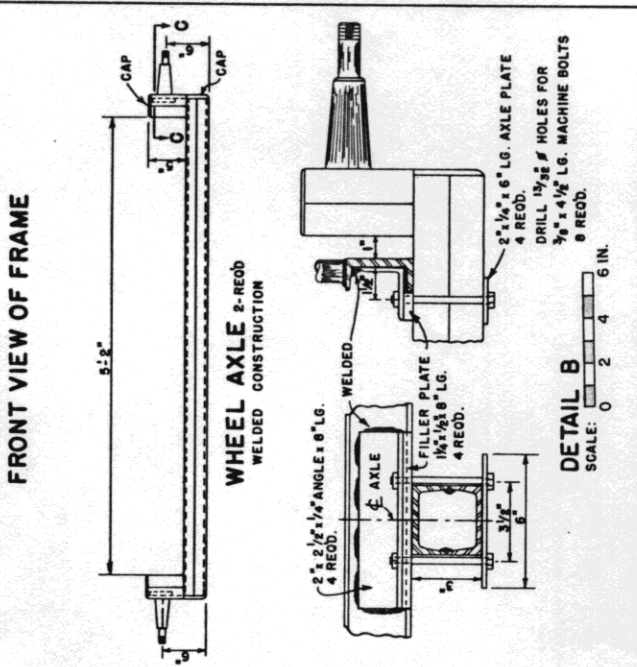
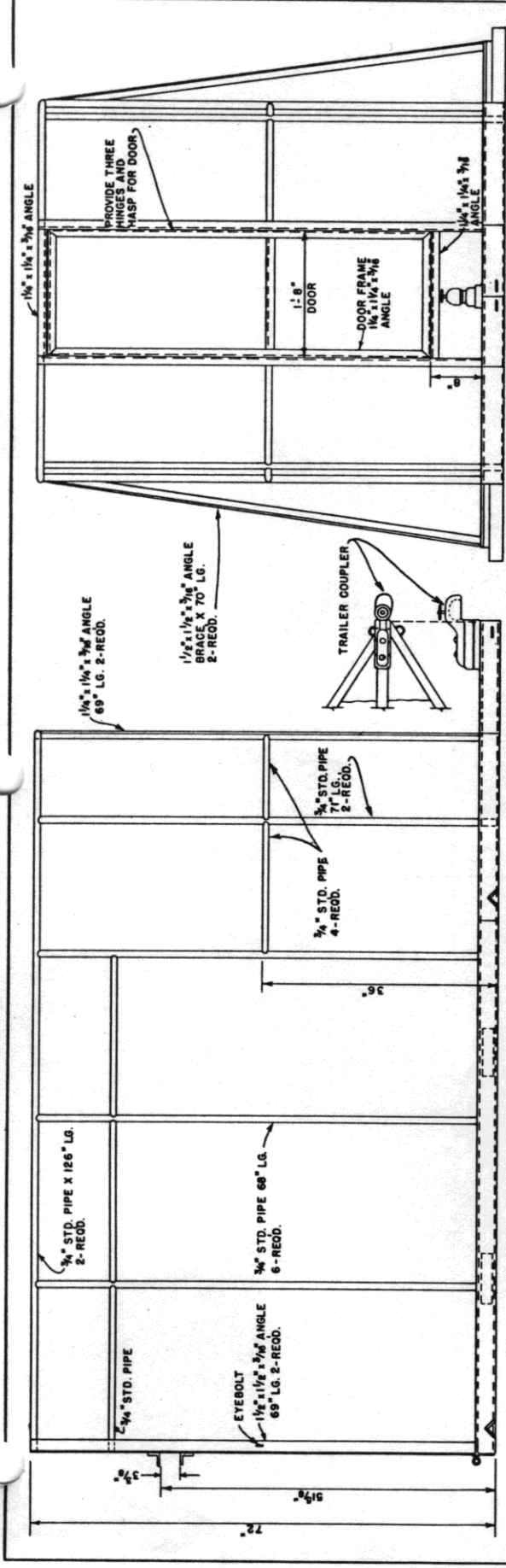


DETAIL B
SCALE: 0 2 4 6 IN.

COOPERATIVE EXTENSION WORK IN
AGRICULTURE AND HOME ECONOMICS
DEPARTMENT OF AGRICULTURAL ENGINEERING
UNIVERSITY OF MARYLAND
AND
UNITED STATES DEPARTMENT OF AGRICULTURE COOPERATING

TWO-HORSE TRAILER
FOUR WHEEL TANDEM AXLE

ORE. '62 EX. 5943 SHEET 1 OF 2



COOPERATIVE EXTENSION WORK IN AGRICULTURE AND HOME ECONOMICS
DEPARTMENT OF AGRICULTURAL ENGINEERING
UNIVERSITY OF MARYLAND
UNITED STATES DEPARTMENT OF AGRICULTURE COOPERATING

TWO-HORSE TRAILER
FOUR WHEEL, TANDEN AXLE

ORE. '82 EX. 5943 SHEET 2 OF 2

SECTION C-C

0 2 4 6 IN.