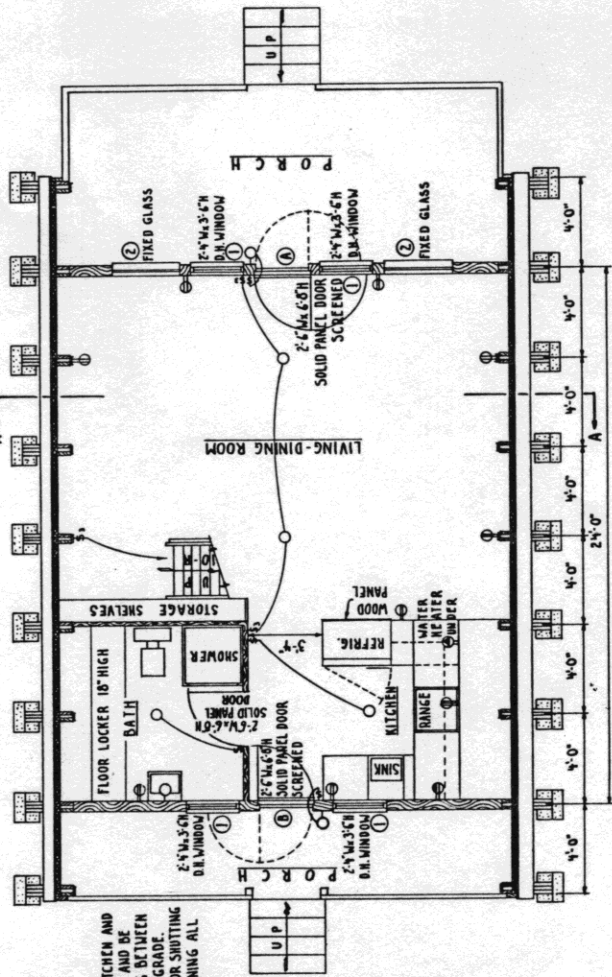


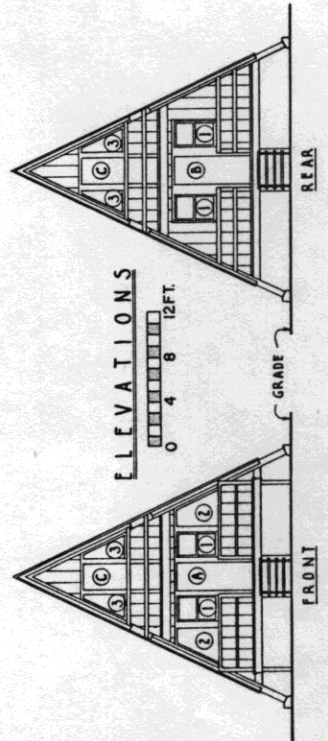
SECOND FLOOR PLAN

REAR WALL AT SECOND FLOOR MAY BE CONSTRUCTED AT END SET OF RAFTERS THEREBY INCREASING LENGTH OF BEDROOM. IF THIS IS DONE SUBSTITUTE A DOUBLE HUNG WINDOW FOR DOOR.

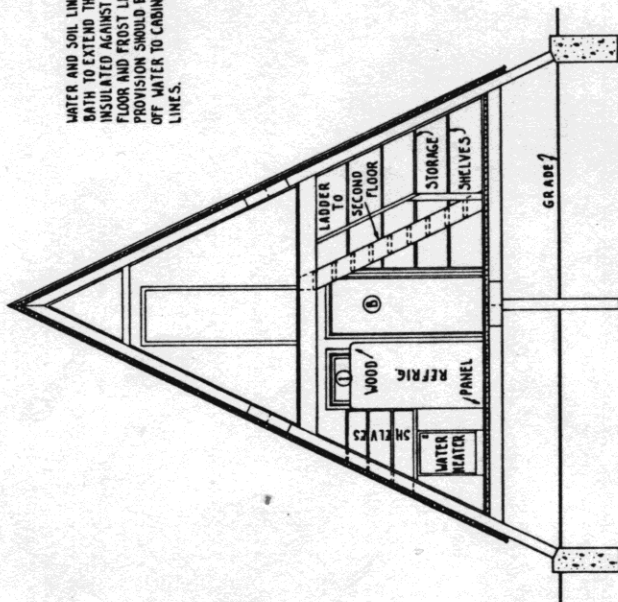


FIRST FLOOR PLAN

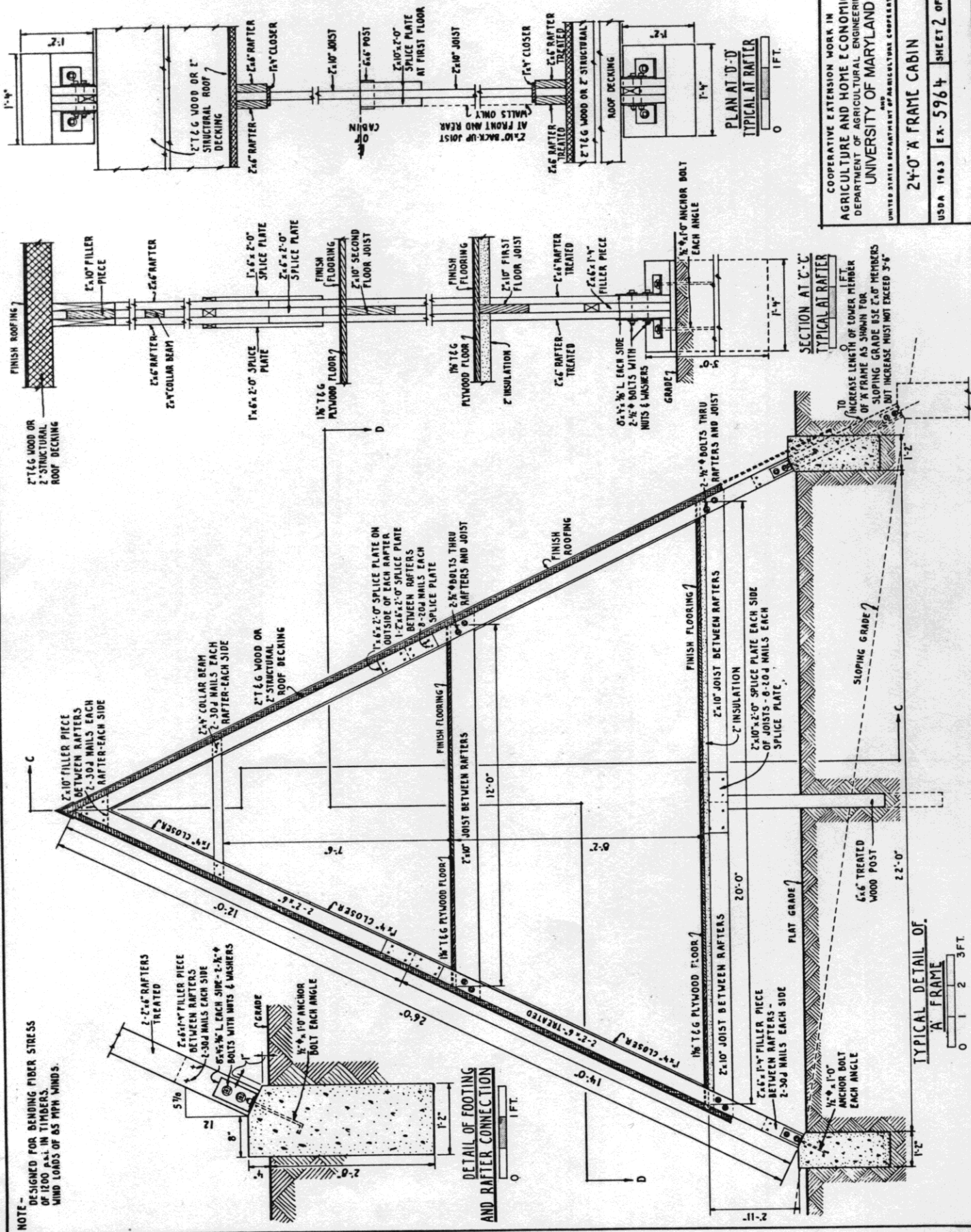
WATER AND SOIL LINES FOR KITCHEN AND BATH TO EXTEND THRU FLOOR AND BE INSULATED AGAINST FREEZING BETWEEN FLOOR AND FROST LINE BELOW GRADE. PROVISION SHOULD BE MADE FOR SHUTTING OFF WATER TO CABIN AND DRAINING ALL LINES.



ELEVATIONS



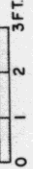
SECTION A-A



NOTE -
 DESIGNED FOR BENDING FIBER STRESS
 OF 1200 P.S.I. IN TIMBERS.
 WIND LOADS OF 65 MPH WINDS.

DETAIL OF FOOTING
 AND RAFTER CONNECTION

TYPICAL DETAIL OF
 'A' FRAME



INCREASE LENGTH OF LOWER MEMBER
 OF 'A' FRAME AS SHOWN FOR
 SLOPING GRADE USE 2x6 MEMBERS
 BUT INCREASE MUST NOT EXCEED 3'-6"

SECTION AT 'C-C'
 TYPICAL AT RAFTER

PLAN AT 'D-D'
 TYPICAL AT RAFTER

