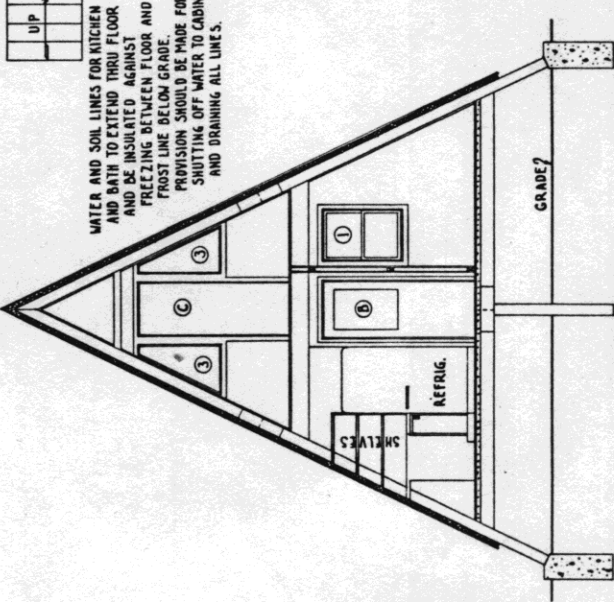
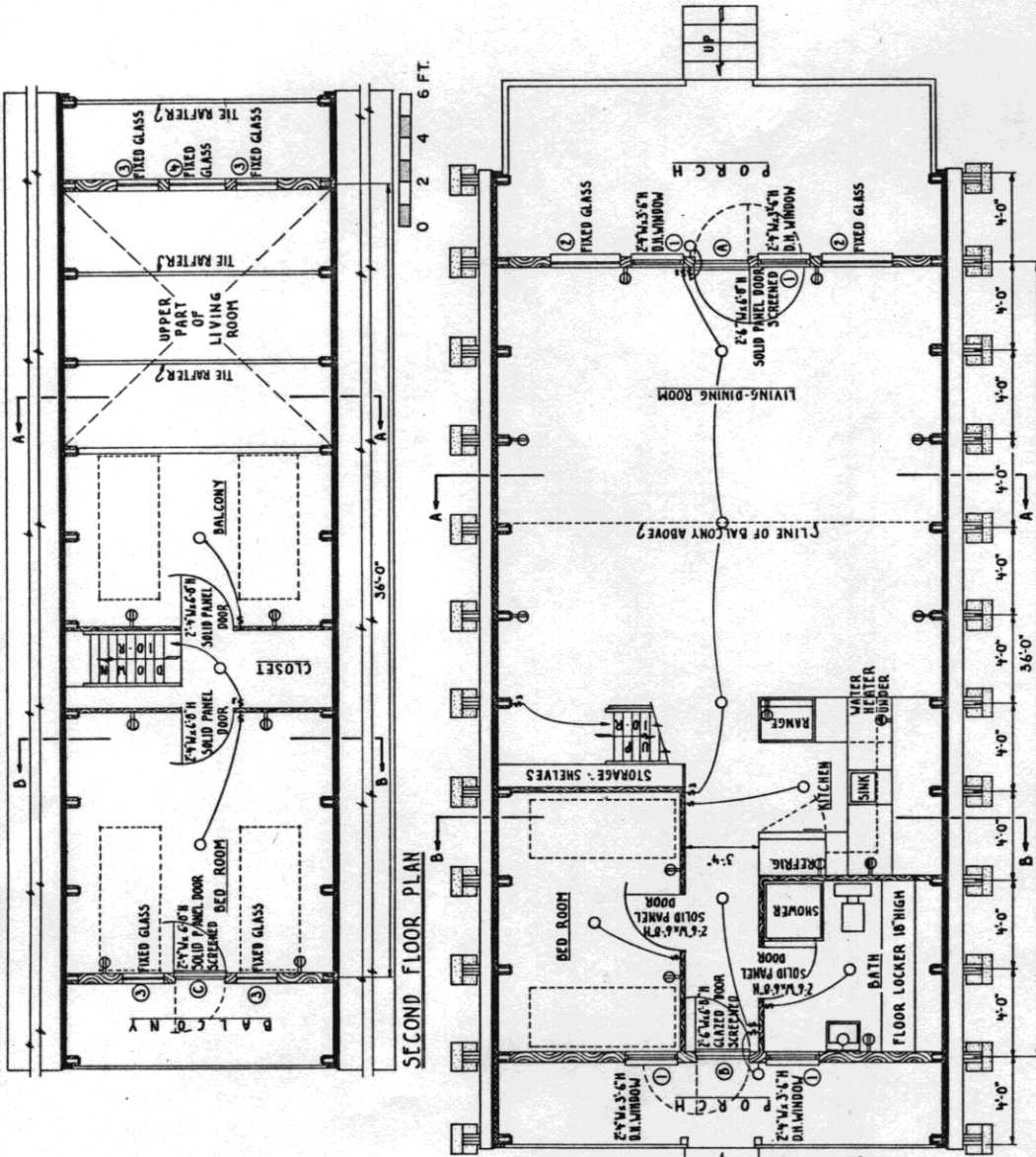


SECTION A-A
0 2 4 6 FT.

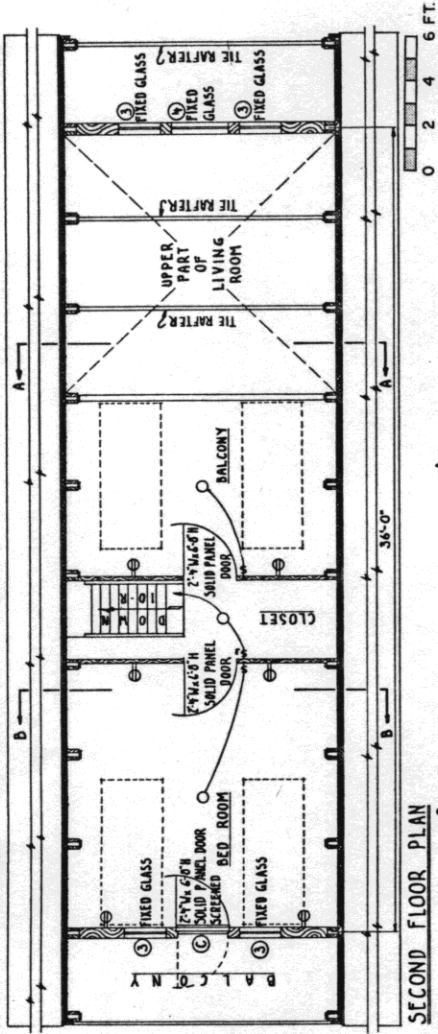


SECTION B-B
0 2 4 6 FT.

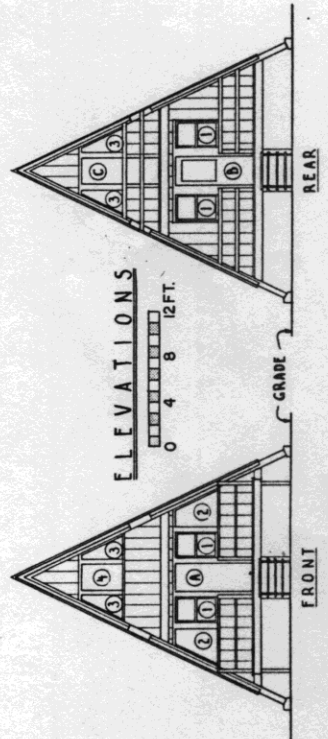
WATER AND SOIL LINES FOR KITCHEN AND BATH TO EXTEND THRU FLOOR AND BE INSULATED AGAINST FREEZING BETWEEN FLOOR AND FROST LINE BELOW GRADE. PROVISION SHOULD BE MADE FOR SHUTTING OFF WATER TO CABIN AND DRAINING ALL LINES.



FIRST FLOOR PLAN
0 2 4 6 FT.



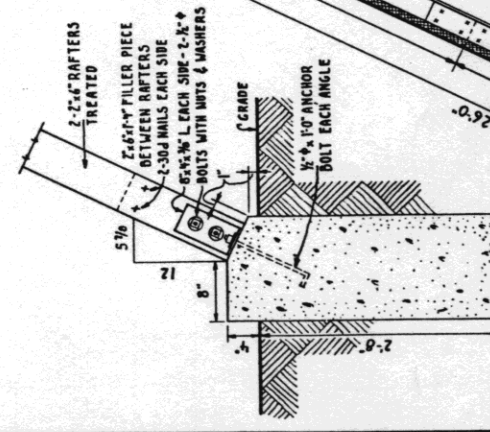
SECOND FLOOR PLAN
0 2 4 6 FT.



ELEVATIONS
0 4 8 12 FT.

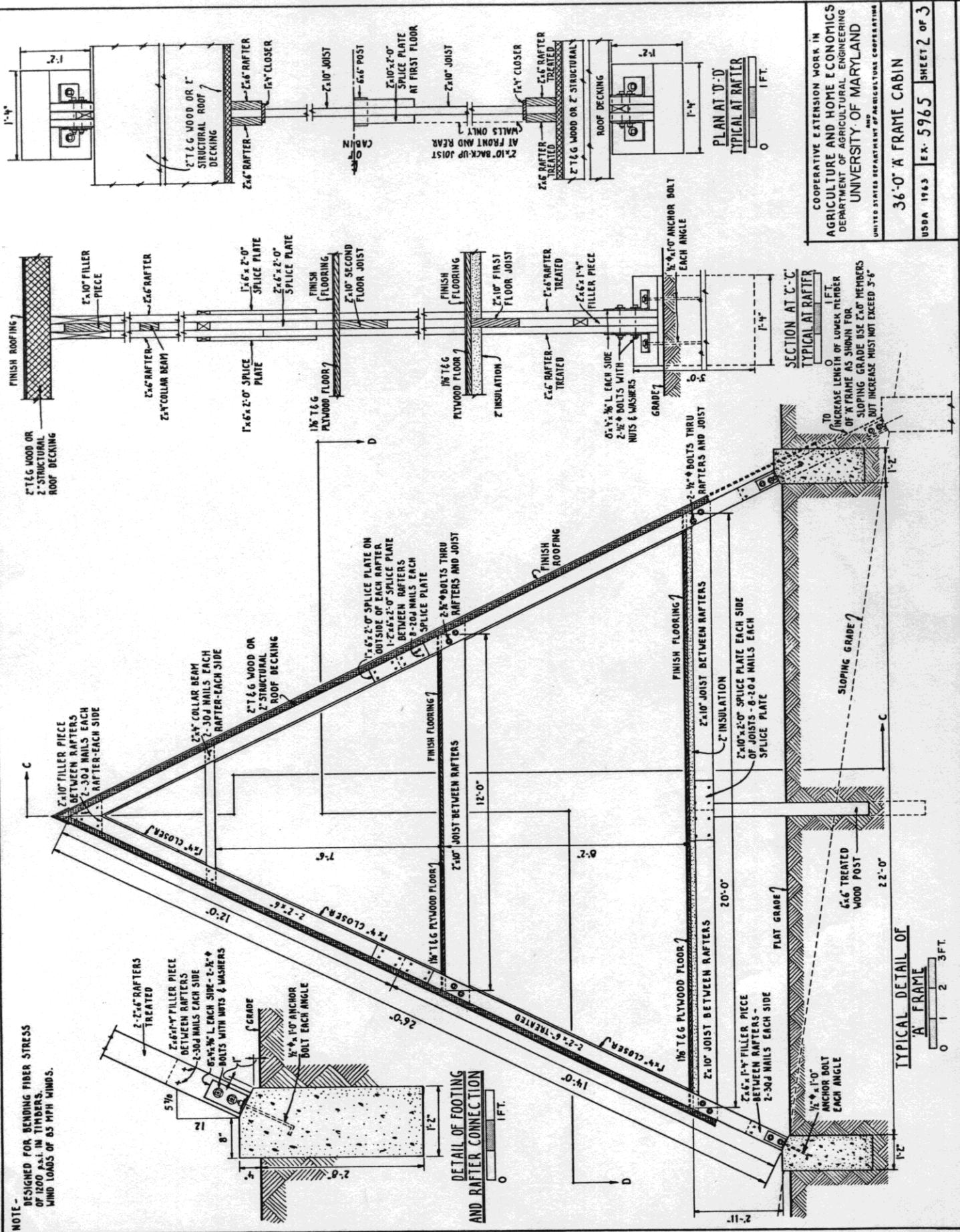
COOPERATIVE EXTENSION WORK IN
AGRICULTURE AND HOME ECONOMICS
DEPARTMENT OF AGRICULTURAL ENGINEERING
UNIVERSITY OF MARYLAND
AND
UNITED STATES DEPARTMENT OF AGRICULTURE COOPERATIVE
36'-0" A FRAME CABIN
USDA 1963 EX. 5965 SHEET 1 OF 3

NOTE -
DESIGNED FOR BENDING FIBER STRESS
OF 1200 P.S.I. IN TIMBERS.
WIND LOADS OF 65 MPH WINDS.



DETAIL OF FOOTING
AND RAFTER CONNECTION

0 1 2 3 FT.



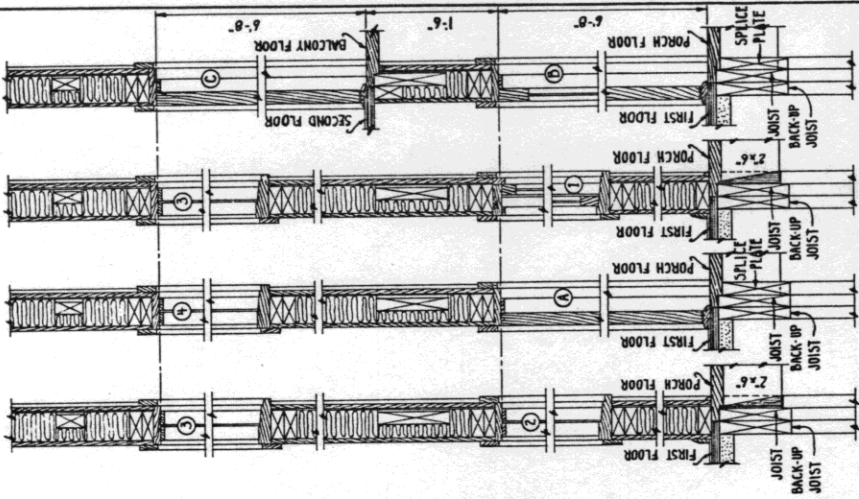
TYPICAL DETAIL OF
'A' FRAME

0 1 2 3 FT.

PLAN AT 'D-D'
TYPICAL AT RAFTER

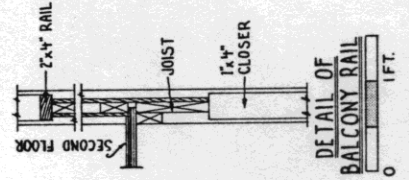
SECTION AT 'C-C'
TYPICAL AT RAFTER

INCREASE LENGTH OF LOWER MEMBER
OF 'A' FRAME AS SHOWN FOR
SLOPING GRADE USE 2x6 MEMBERS
BUT INCREASE MUST NOT EXCEED 3'-6"

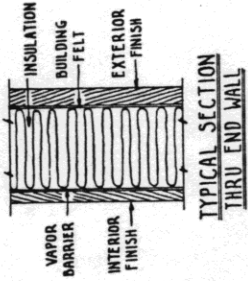


SECTION EE SECTION FF SECTION GG SECTION HH

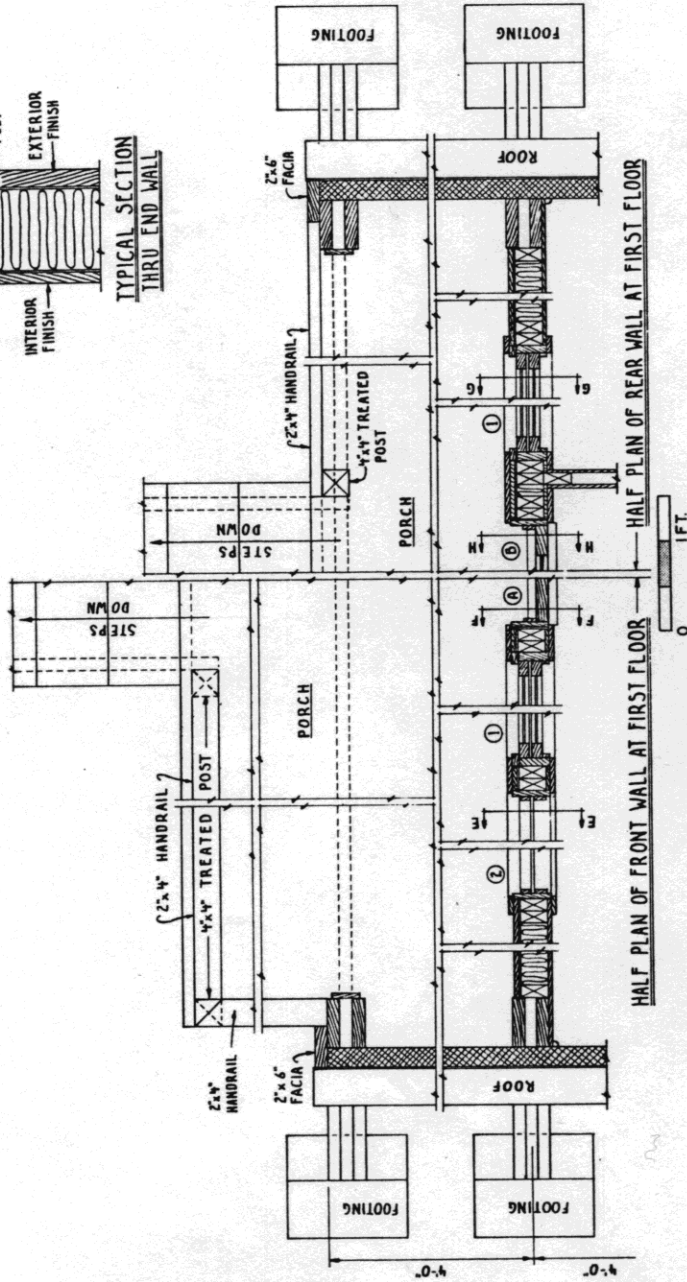
NOTE - PORCH CONSTRUCTION - 2" PLANKING ON 2x6 FRAMING - 2'-0" O.C.



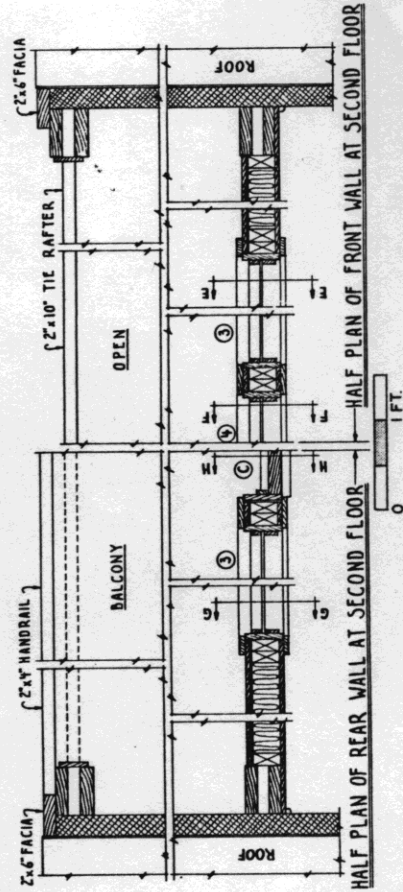
DETAIL OF BALCONY RAIL 1 FT.



TYPICAL SECTION THRU END WALL



HALF PLAN OF FRONT WALL AT FIRST FLOOR HALF PLAN OF REAR WALL AT FIRST FLOOR



HALF PLAN OF REAR WALL AT SECOND FLOOR HALF PLAN OF FRONT WALL AT SECOND FLOOR

COOPERATIVE EXTENSION WORK IN
 AGRICULTURE AND HOME ECONOMICS
 DEPARTMENT OF AGRICULTURAL ENGINEERING
 UNIVERSITY OF MARYLAND
 AND
 UNITED STATES DEPARTMENT OF AGRICULTURE COOPERATIVE

36'-0" X FRAME CABIN
 USDA 1943 E.X. 5965 SHEET 3 OF 3