

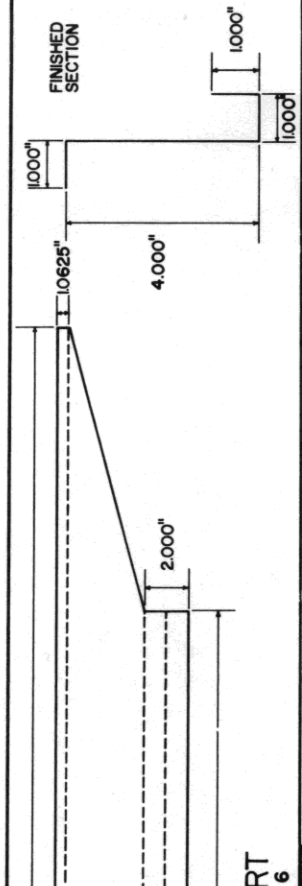
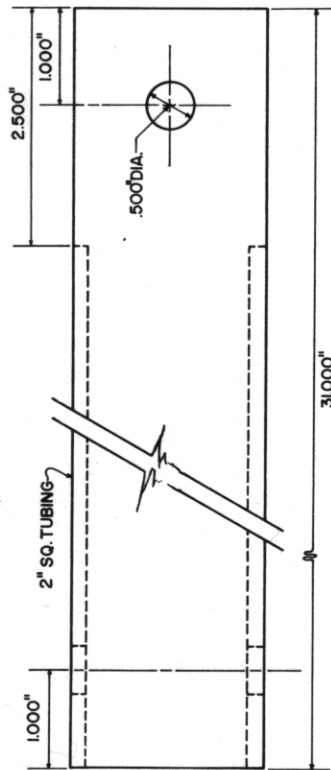
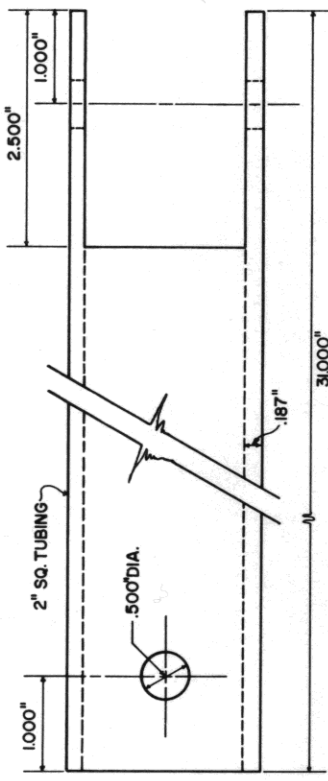
BASED ON UNIV. OF FLA. PLAN NO. 1081
 COOPERATIVE EXTENSION WORK IN
 AGRICULTURE AND HOME ECONOMICS

AND
 UNITED STATES DEPARTMENT OF AGRICULTURE COOPERATING

NURSERY WAGON
 FOUR WHEEL STEER

FLA. '78 6293 SHEET 1 OF 5

HANDLE
1 REQ. PART NO. 25
NOT TO SCALE



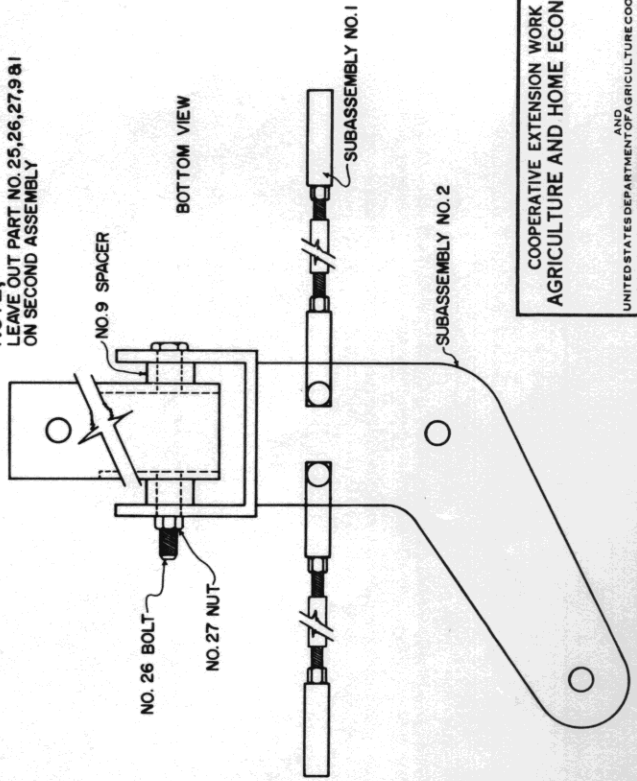
1) CUT OUT TWO PIECES FROM 16 GA. HR. STEEL
2) BEND ON BROKEN LINES TO SECTION SHOWN.

BED SUPPORT
2 REQ. PART NO. 6

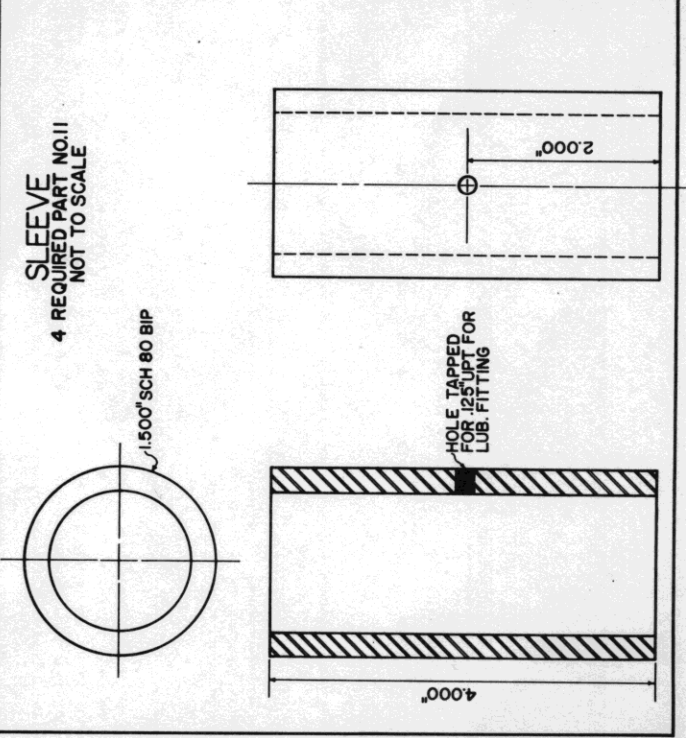
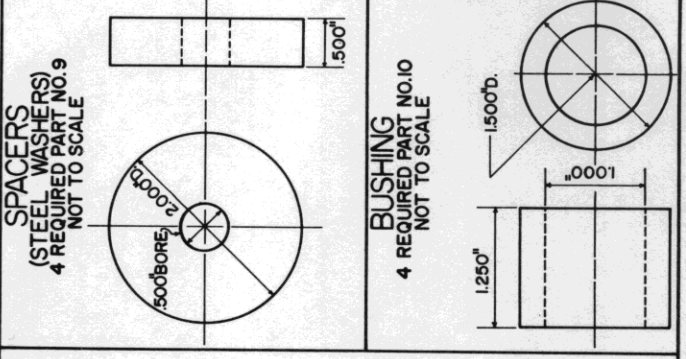
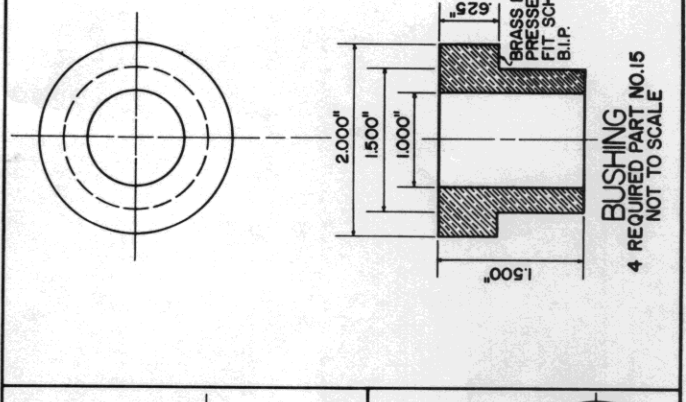
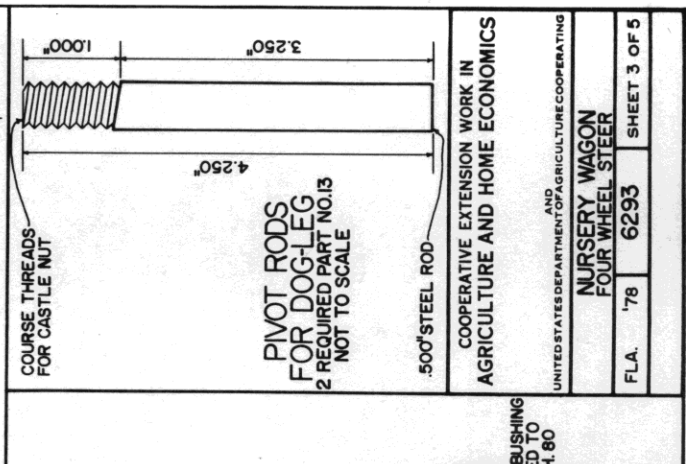
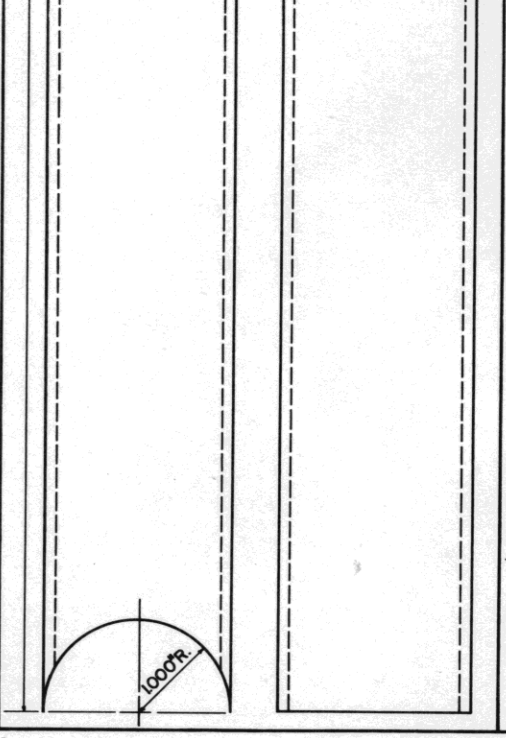
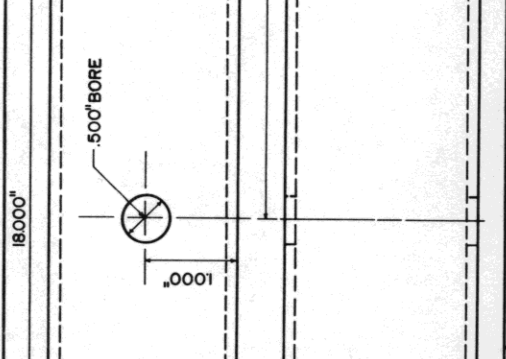
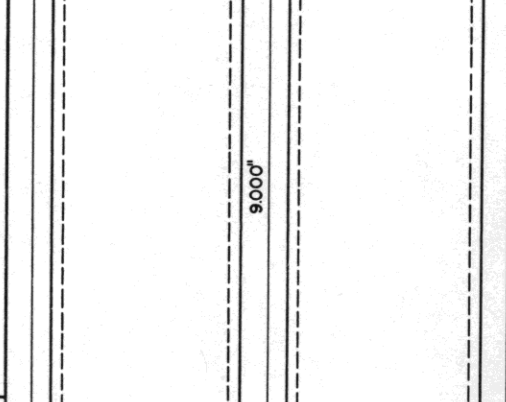
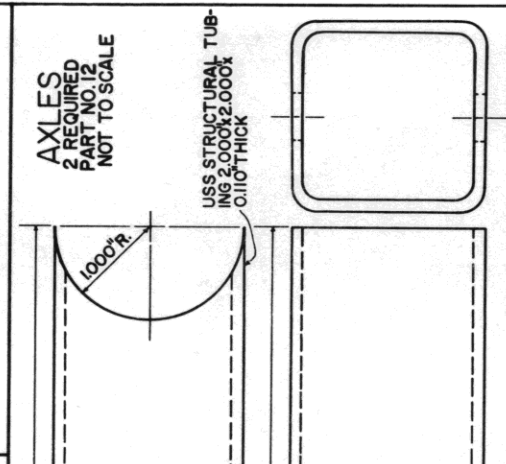
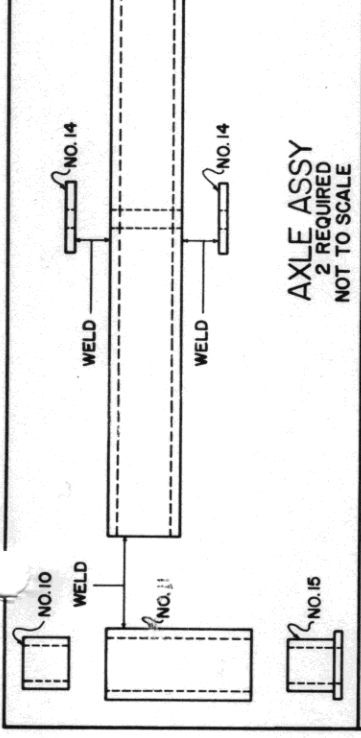
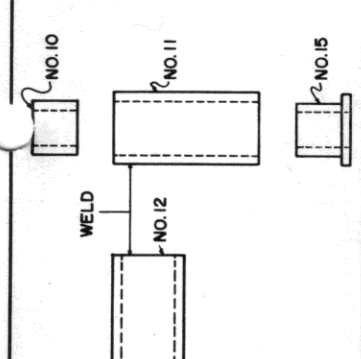
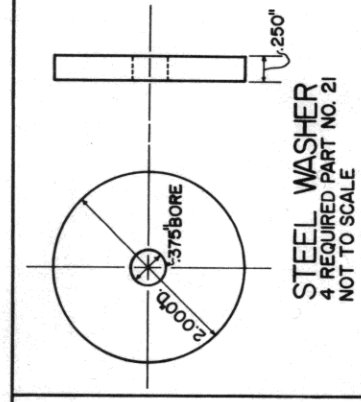
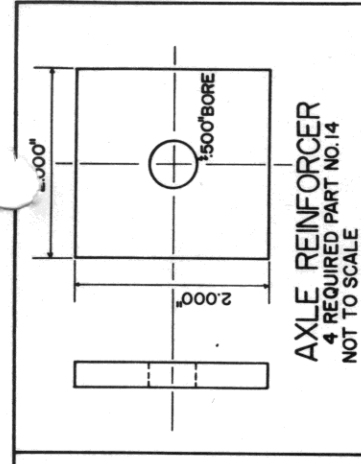
PARTS LIST

PART NUMBER	DESCRIPTION	NUMBER REQUIRED	P-PURCHASE M-MAKE
#1	TONGUE MOUNTING "U" PLATE	1	M
#2	WHEEL SHAFT	4	M
#3	DOG LEG PLATE	2	M
#4	STEERING ARM LEVER	4	M
#5	BED SUPPORT STIFFENER	2	M
#6	BED SUPPORT	2	M
#7	STEERING ROD	1	M
#8	TIE ROD	4	M
#9	SPACER	4	M
#10	SMALL BUSHING	4	M
#11	SLEEVE	4	M
#12	AXLE	2	M
#13	PIVOT ROD	2	M
#14	AXLE REINFORCER	4	M
#15	LARGE BUSHING	4	M
#16	TIE ROD END (INT. HARVESTER NO. 529 430-R1 OR EQUAL)	10	P
#17	1/2" N.F. 20 NUT	10	P
#18	1/2" x 1/2" N.F. 20 BOLT WITH HEAD REMOVED	10	P&M
#19	3/8" I.I.N.C. CASTLE NUT	4	P
#20	400 x 8 WHEEL AND TIRE WITH SELF LUBRICATING BEARINGS; 3/8" BORE ON OUTSIDE BEARING, 1" BORE ON INSIDE	4	P&M
#21	WASHER	4	M
#22	3/8" x 1/2" 16NC. CAP SCREW	4	P
#23	3/8" x 1/2" 11NC. CASTLE NUT	2	P
#24	WASHER-3/8" INSIDE BORE, 1" O.D., 1/8" THICK	4	P
#25	HANDLE	1	M
#26	1/2" x 4" N.F. 20 BOLT	1	P
#27	1/2" N.F. 20 NUT	1	P
#28	WASHER	4	M

NOTE:
LEAVE OUT PART NO. 25, 26, 27, 9 & 1
ON SECOND ASSEMBLY



HANDLE ASSEMBLY
2 REQUIRED

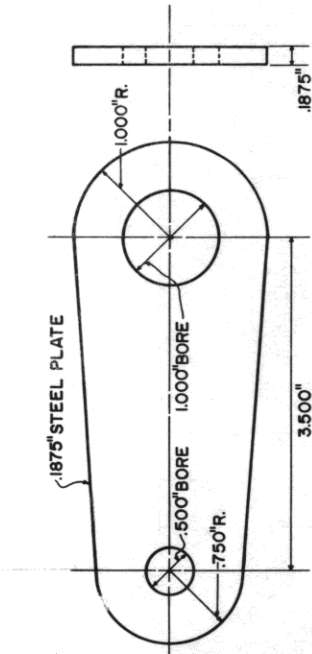


COOPERATIVE EXTENSION WORK IN AGRICULTURE AND HOME ECONOMICS

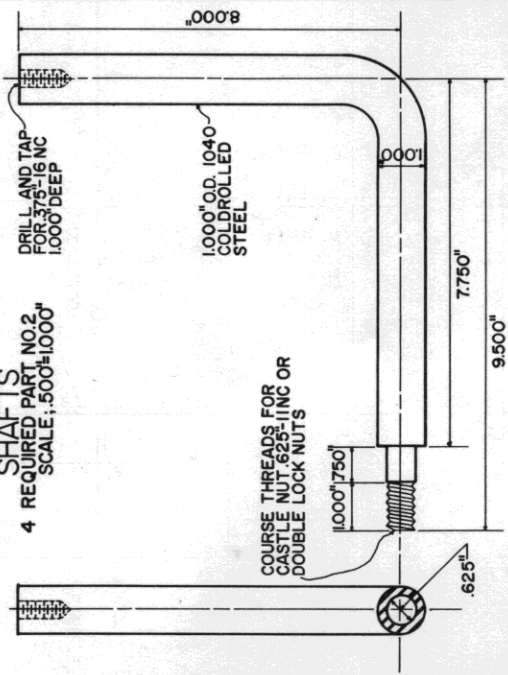
UNITED STATES DEPARTMENT OF AGRICULTURE COOPERATING AND NURSERY WAGON FOUR WHEEL STEER

FLA. '78 6293 SHEET 3 OF 5

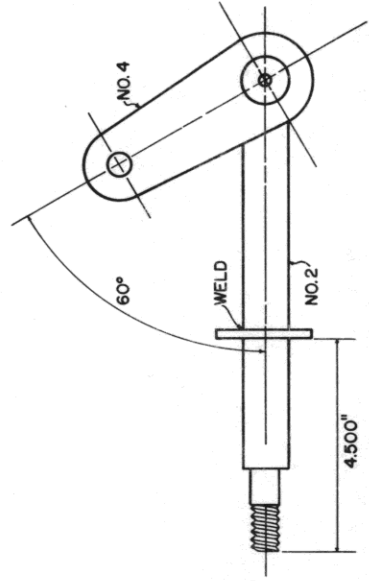
STEERING ARM LEVER
4 REQUIRED PART NO. 4
NOT TO SCALE



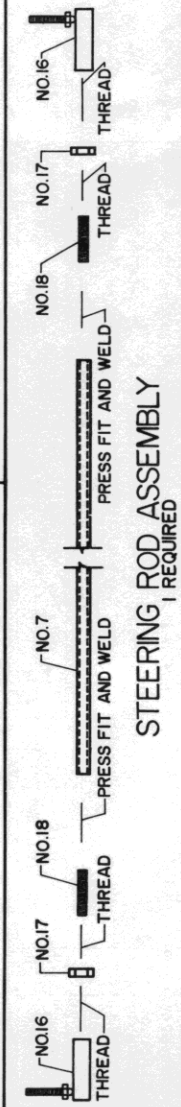
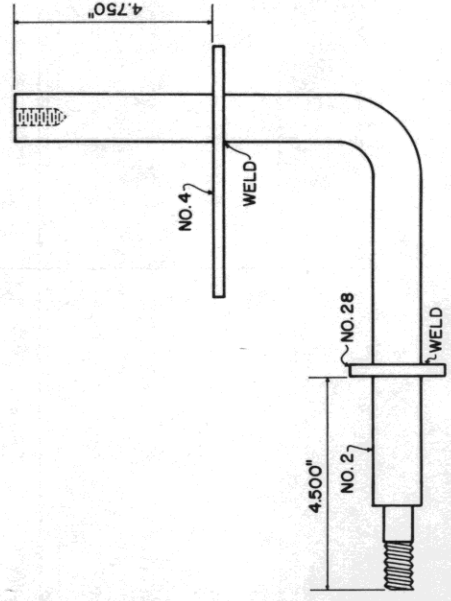
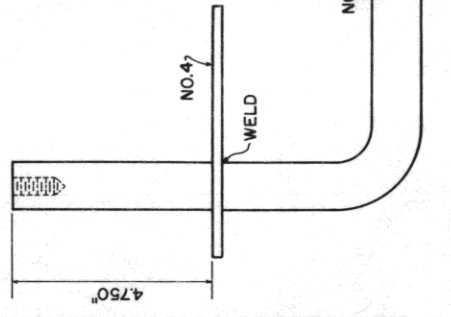
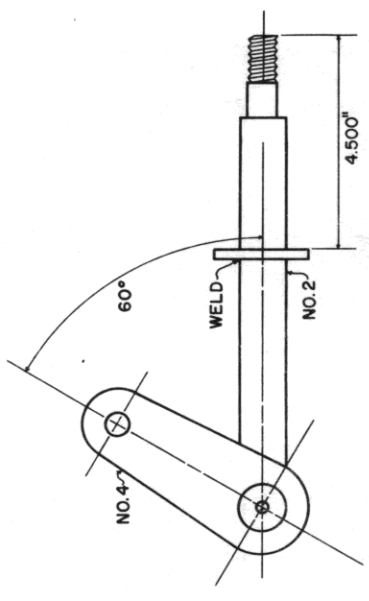
SHAFTS
4 REQUIRED PART NO. 2
SCALE: 500 \pm 1.000\"/>



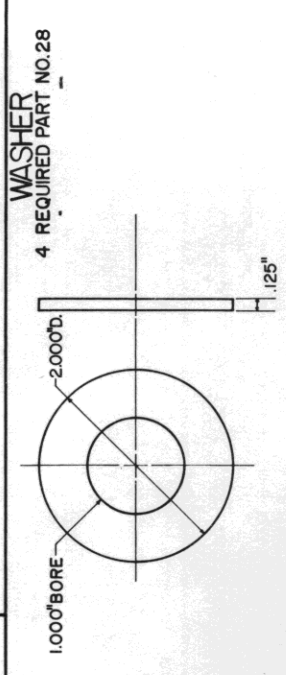
LEFT FRONT & RIGHT REAR WHEEL SHAFT ASSY.
SCALE: 500 \pm 1.000\"/>



RIGHT FRONT & LEFT REAR WHEEL SHAFT ASSY.
SCALE: 500 \pm 1.000\"/>

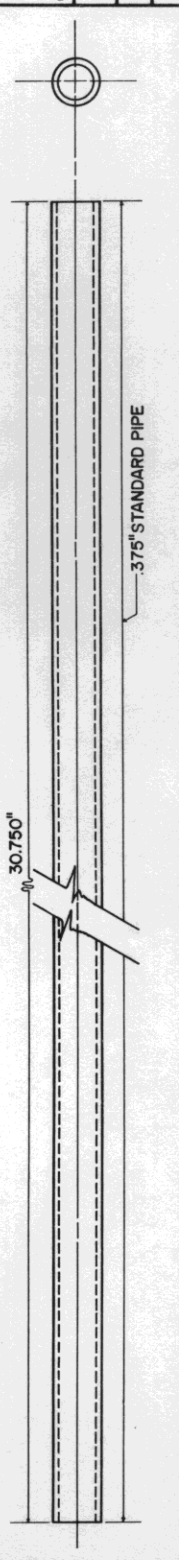


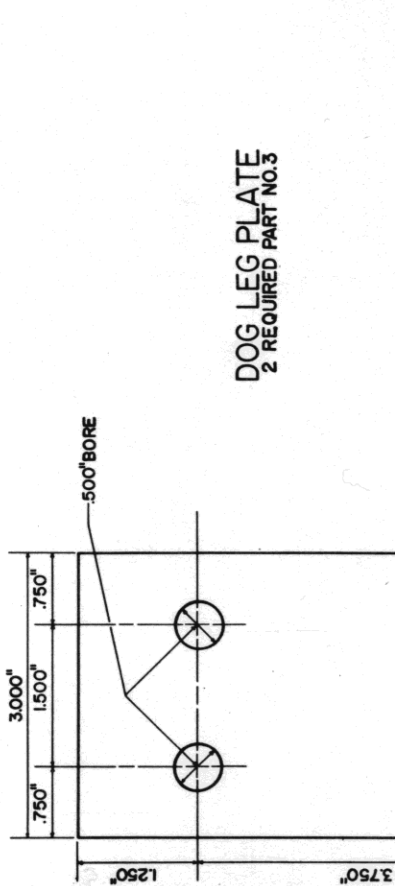
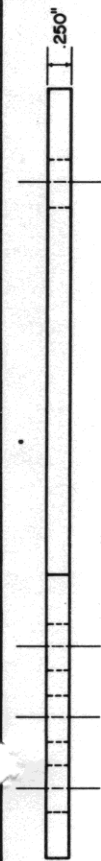
STEERING ROD
1 REQUIRED PART NO. 7



WASHER
4 REQUIRED PART NO. 28

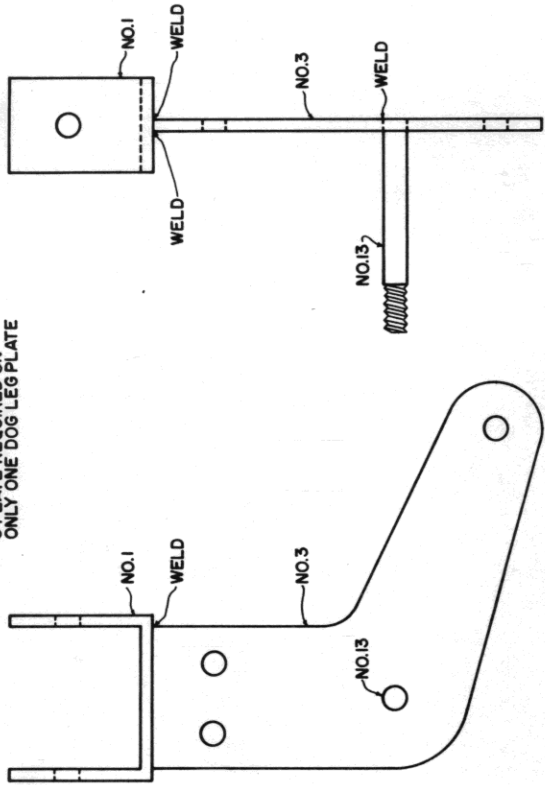
COOPERATIVE EXTENSION WORK IN AGRICULTURE AND HOME ECONOMICS	
AND UNITED STATES DEPARTMENT OF AGRICULTURE COOPERATING	
NURSERY WAGON	
FOUR WHEEL STEER	
FLA. '78	6293
	SHEET 4 OF 5



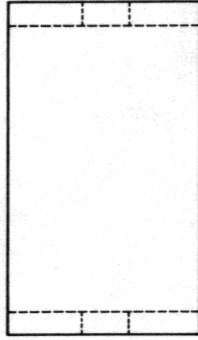


DOG LEG PLATE
2 REQUIRED PART NO.3

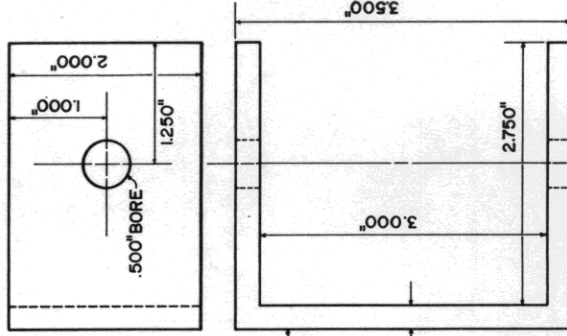
NOTE: 1 REQUIRED ON U PLATE ONLY ONE DOG LEG PLATE



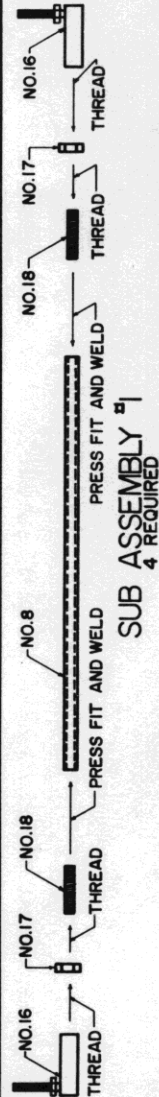
SUB ASSEMBLY #2
2 REQUIRED



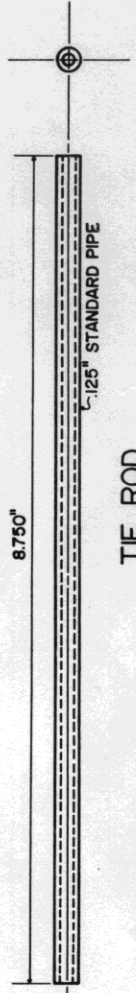
TONGUE MOUNTING U PLATE
1 REQUIRED PART NO.1



.250" STEEL PLATE



SUB ASSEMBLY #1
4 REQUIRED



TIE ROD
4 REQUIRED PART NO.8

COOPERATIVE EXTENSION WORK IN
AGRICULTURE AND HOME ECONOMICS

AND
UNITED STATES DEPARTMENT OF AGRICULTURE COOPERATING

NURSERY WAGON
FOUR WHEEL STEER

FLA. '78 6293 SHEET 5 OF 5