



Thank you!

Thank you for ordering a Downloadable WOOD PLAN. We hope you enjoy being a part of this new online experience and that you have fun building your wood-working project.

Please remember that this copyrighted material is for your use only. It is unlawful to share this file with someone else or to reprint it in any form.

Bill Krier
Editor
WOOD® magazine

Adobe Acrobat Troubleshooting Guide

*If you can read this page, your Acrobat program is working correctly!
But you may still have problems or specific issues such as printing and saving your Downloadable WOOD PLAN.*

My printer won't print the text correctly

Almost all printing problems are due to not enough free system resources memory. The files are very memory intensive since they include graphics, text, and photos. Close all other programs/applications and print directly out of the Acrobat Reader program, not your Web-browser.

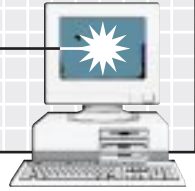
Patterns are not printing full size

Make sure your printer is set to print at 100% and that "print to fit" is not checked. These settings are selected in the printer setup or printer options.

I can't save my file now that it's downloaded

You must save the plan when you download the file. Download the file again, except this time try right-clicking on the red download button. A menu window will open. Select "Save target as" or "Save link as" to save the file to your hard drive. Once saved, you can open it with Adobe Acrobat Reader.

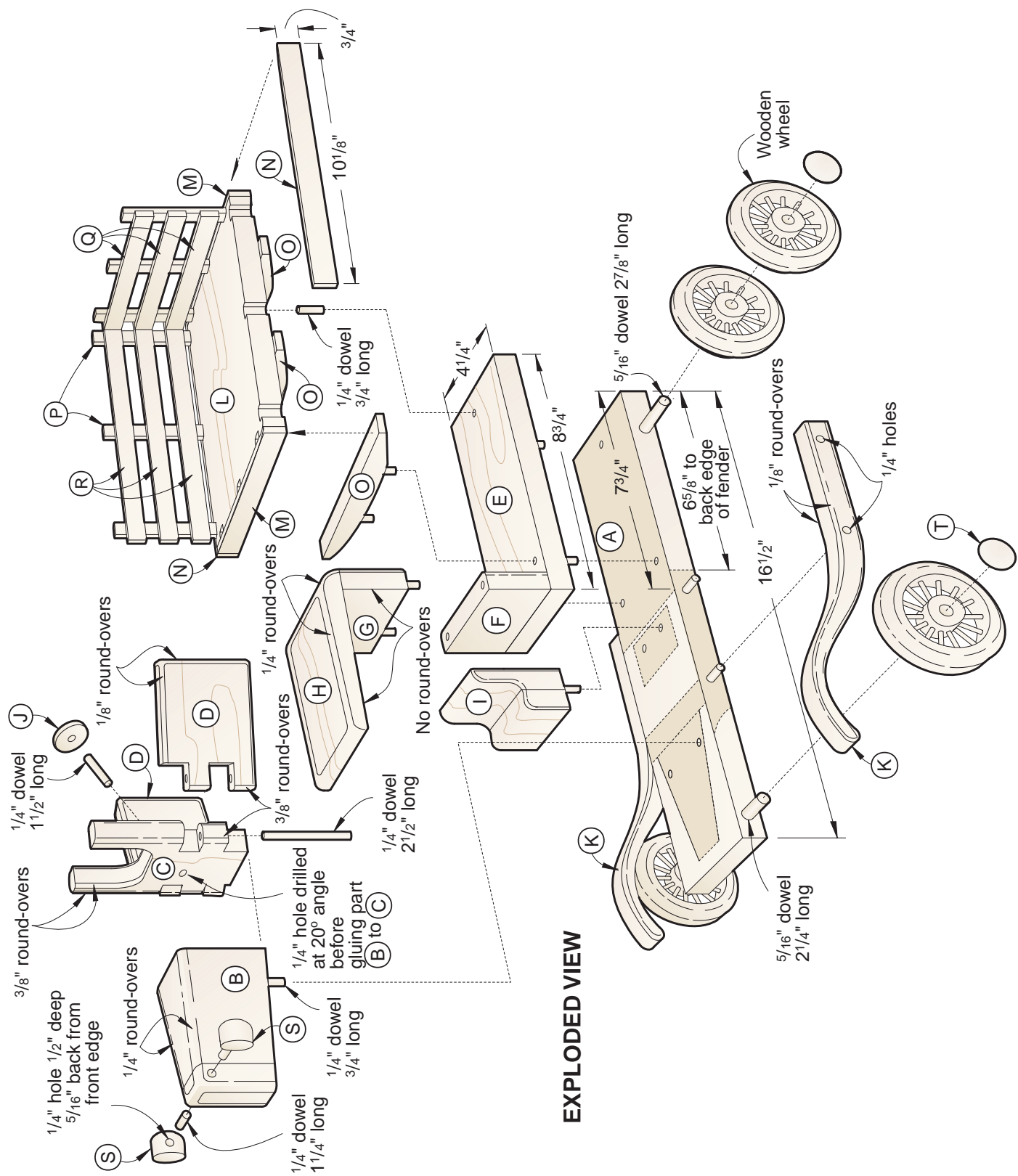
For more details on using Adobe Acrobat Reader please visit our online help section at:
<http://woodstore.woodmall.com/clicherforde.html>



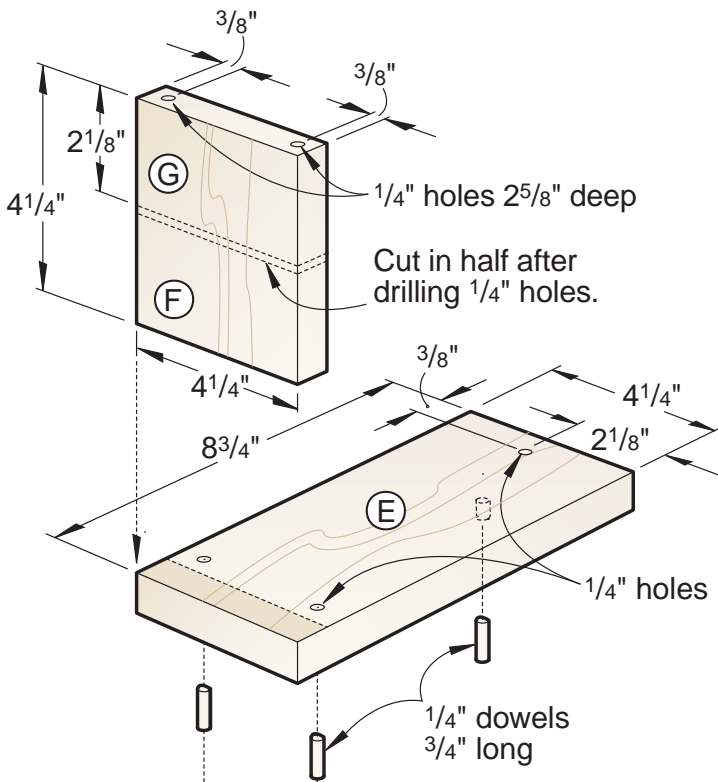
Collector's Edition **Farm Truck**

Designed by professional toymaker Steve Baldwin of Omaha, Nebraska, this hardworking little truck pleases children and adults alike. And thanks to the full-sized patterns for many of the parts, it goes together faster than you might imagine. Go ahead, give it a try.

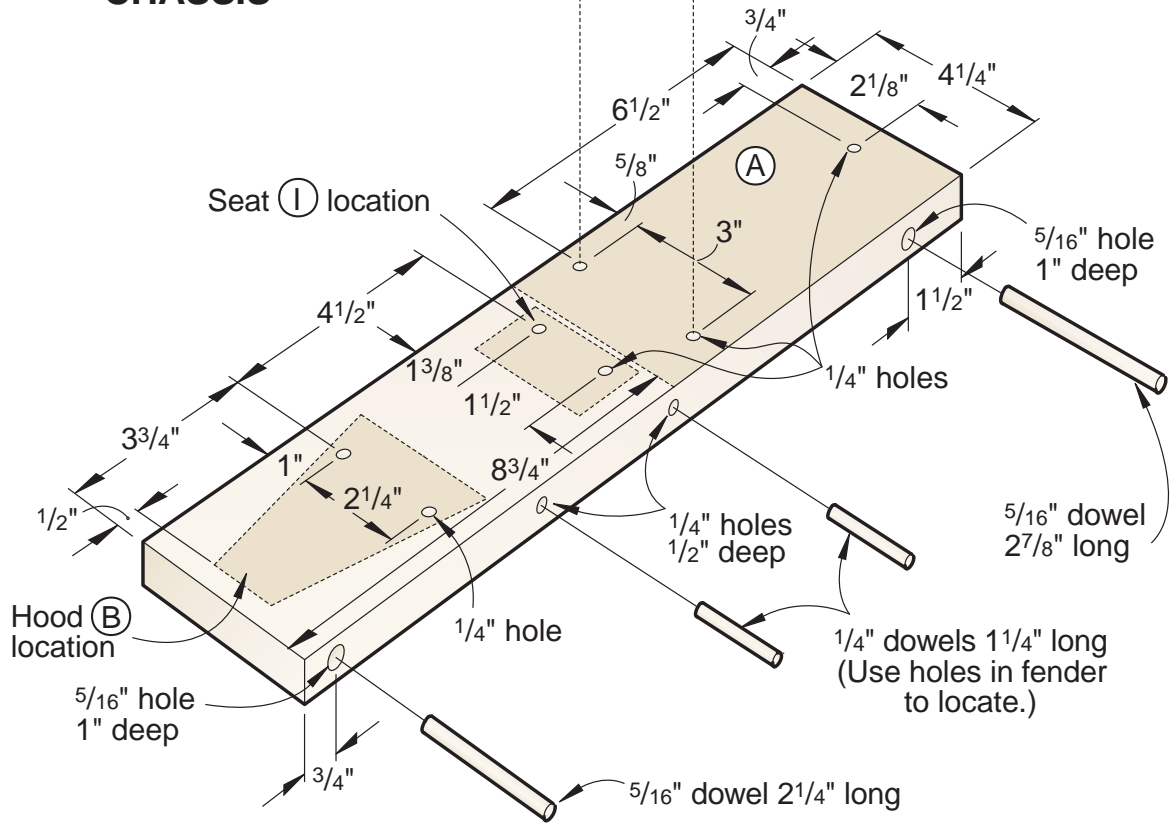




EXPLODED VIEW



CHASSIS

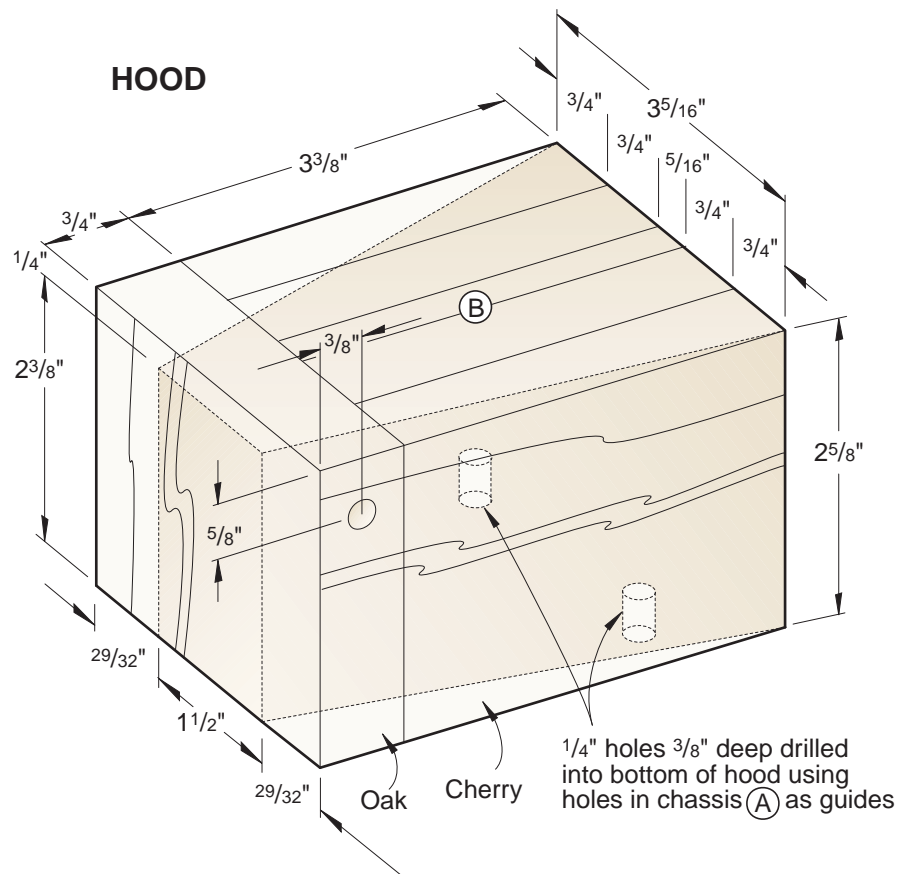


Bill of Materials					
Part	Finished Size			Mati.	Qty.
	T	W	L		
CHASSIS AND CAB					
A chassis	3/4"	4 1/4"	16 1/2"	W	1
B hood blank	2 5/8"	3 5/16"	4 1/8"	C/O	1
C cab front	3/4"	4"	47/8"	C	1
D doors	3/4"	2 3/4"	4"	C	2
E box base	3/4"	4 1/4"	8 3/4"	W	1
F* cab back bottom	3/4"	4 1/4"	2"	C	1
G* cab back top	3/4"	4 1/4"	2 1/8"	C	1
H cab top	3/4"	4 1/4"	5 1/2"	C	1
I seat	1 1/2"	2 5/8"	2 7/8"	LW	1
J steering wheel	3/8"	1 1/4" dia.		W	1
K fender blanks	3/4"	2 5/8"	11"	C	2
TRUCK BOX					
L truck bed	3/4"	7 3/8"	9 5/8"	O	1
M box trim	1/4"	3/4"	7 3/8"	O	2
N box trim	1/4"	3/4"	10 1/8"	O	2
O ribs	3/4"	7"	7 7/8"	O	3
P stakes	1/4"	1/2"	4"	O	12
Q slats	1/4"	5/8"	6 3/8"	O	6
R slats	1/4"	5/8"	10 1/8"	O	6
HEADLIGHTS AND HUBCAPS					
S* headlights	3/4"	1" dia.		C	2
T* hubcaps	3/8"	7/8" dia.		M	4

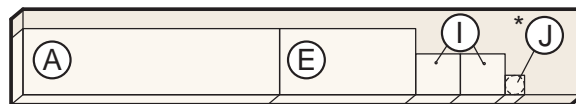
* Cut parts marked with an * oversized. Trim to finished size according to the how-to instructions.

Materials Key: W—walnut, C/O—cherry and oak, C—cherry, O—oak, M—maple, LW—laminated walnut

Supplies: 1/4" and 5/16" dowel stock, clear finish

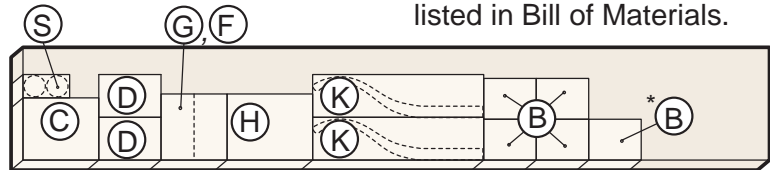


CUTTING DIAGRAM

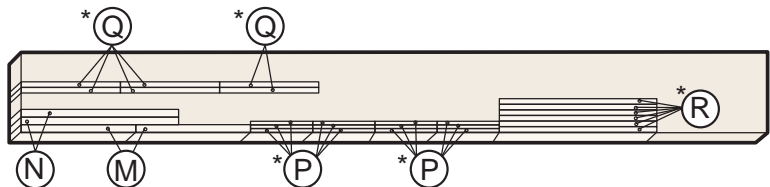


3/4 x 5 1/2 x 36" Walnut

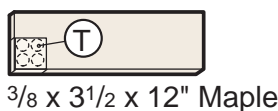
* Plane or resaw to thickness listed in Bill of Materials.



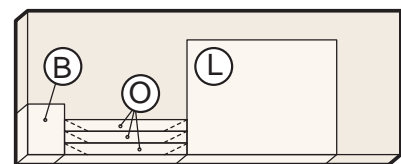
3/4 x 7 1/4 x 48" Cherry



3/4 x 5 1/2 x 48" Oak



3/8 x 3 1/2 x 12" Maple



3/4 x 9 1/4 x 24" Oak

Start with the chassis

1 Cut the chassis (A) to the size listed in the Bill of Materials. Mark the seven centerpoints for the ¼" holes on the *top surface* of the chassis where dimensioned on the Chassis drawing. Using a brad-point bit in your drill press, drill the ¼" holes where marked.

2 Mark the four ⅜" axle-hole centerpoints on the *edges* of the chassis where shown on the Chassis drawing. Drill them 1" deep. We used a large handscrew clamp to hold the chassis steady and square to the drill-press table when drilling the holes. *Don't* drill the ¼" holes for the fenders now.

Laminate the stock and add the hood next

1 Using ¾" and ⅝" stock, laminate the pieces to form the hood blank in the configuration shown on the Hood drawing. Note that the front of the hood is oak and the rest is cherry.

2 Mark the location where the hood will sit on the chassis (½" from the

front edge and centered side-to-side) where dimensioned on the Chassis drawing. Using double-faced tape, adhere the hood to the chassis. As shown in the photo *below*, flip the chassis upside down. Then, use the front two ¼" holes previously drilled in the chassis as guides, and drill ¼" holes ⅜" deep into the bottom of the hood lamination.

3 Separate the hood from the chassis. Transfer the full-sized Top View pattern on *page 10* to the hood lamination. Next, mark the centerpoints for the headlights on the sides of the hood where located on the Hood drawing. Drill a ¼" hole 1½" deep on each side of the hood blank for the headlight-support dowels. Bandsaw and sand the hood to shape.

4 Rout and sand ¼" round-overs on the hood where shown on the Exploded View drawing. (Since the hood is small and hard to handle, we did the routing on a router table fitted with a fence.)

5 Cut two pieces of ¼" dowel to ¾" long. Sand a slight taper on one end of each dowel. With the tapered

ends protruding, glue the dowels into the holes in the bottom of the hood.

Now, for the cab front and swinging doors

1 Cut the cab front (C) and doors (D) to the sizes listed in the Bill of Materials. Transfer the full-sized patterns to all three pieces.

2 Drill ¼" holes into the bottom of the cab front and doors where marked on the patterns.

3 Rout ⅜" round-overs along the mating edges of the cab and doors where shown on the Exploded View drawing. Rout or sand ⅛" round-overs along the other edges. Now, bandsaw the pieces to shape.

4 Drill a ¼" hole at a 20° angle on the inside surface of the cab front for the steering-wheel dowel.

5 Sand the pieces, and use a pair of ¼" dowels that are 2½" long to hinge the doors to the cab front. (We had to sand our dowels slightly so the doors would swing easily.) Glue the dowels to the cab front but not to the doors.

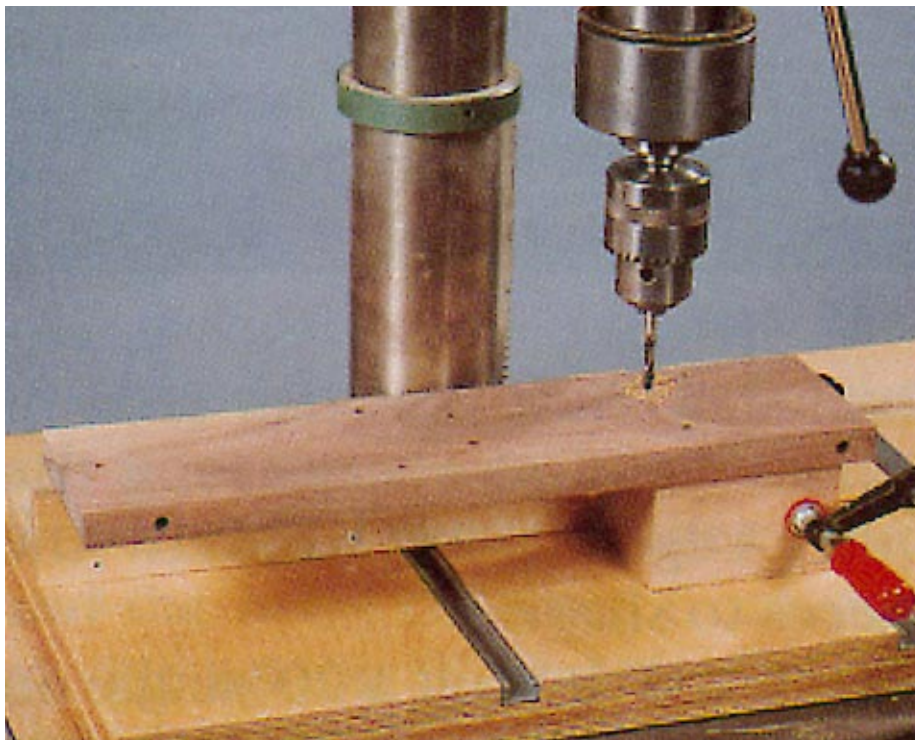
6 With the bottom edges flush and the hood centered from side to side against the cab front, glue and clamp the hood to the cab.

Construct the box base and the cab back and top

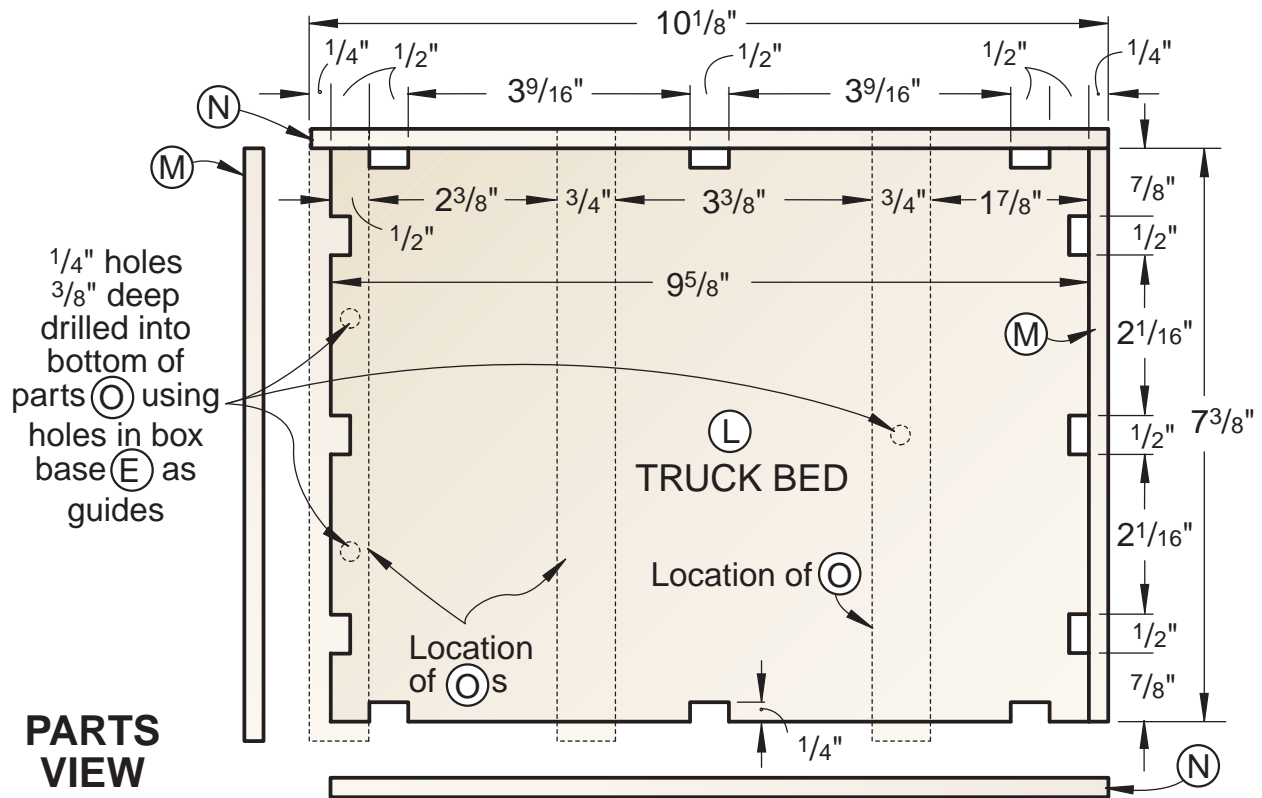
1 Cut the box base (E) to size. Tape it to the chassis where shown on the Exploded View drawing, and use the holes in the chassis as guides to drill three mating holes in the box base. Separate the pieces.

2 For the rearmost hole in the box base, mark its centerpoint where dimensioned on the Chassis drawing. Drill the hole.

3 Cut a piece of ¾" cherry to 4¼" square. Later you'll crosscut this piece in two to form the cab back bottom (F) and cab back top (G) where shown on the Chassis drawing. Drill a pair of ¼" holes 2⅝" deep into the piece where shown on the Chassis drawing. Drilling the holes now ensures that the holes will align



Using the previously drilled front two holes in the chassis as guides, drill mating holes into the bottom of the laminated hood.



PARTS VIEW

after you cut the piece in two. Crosscut the piece in two where shown.

4 Cut the cab top (H) to size. Glue and clamp the cab top to the cab back top (G).

5 Adhere the full-sized side view pattern of the cab top (H) from the pattern insert to one edge. Bandsaw the top of part H to shape. (Part G makes a handy handle when doing this.)

6 Cut a pair of 1/4" dowels 3/4" long and glue them into part G so the dowels protrude 3/8" and will fit into part F. Slide part F onto the dowels and against G. Sand or rout 1/4" round-overs along the edges of the assembly (F, G, H) where noted on the Exploded View drawing. Sand the assembly smooth, and separate F from G. Glue and clamp part F to the top front surface of the box base (E).

Add the contoured seat and steering wheel

1 Laminate two pieces of walnut to form a blank for the seat (I). Transfer

the seat pattern on *page 11* to one end of the blank, and cut the seat to shape. Sand the seat smooth, and add a pair of dowels to its bottom.

2 Use a compass to mark a 1 1/4"-diameter disc on a piece of 3/8"-thick walnut stock for the steering wheel (J). Drill a 1/4" hole through the center of the walnut disc, and then cut and sand it to shape.

3 Cut a piece of 1/4" dowel to 1 1/2" long, and glue it to the steering wheel (J).

A pair of shapely fenders come next

1 Cut two pieces of 3/4" cherry to 2 3/4" wide by 11" long each for the fender blanks (K). Using double-faced tape, adhere the pieces face-to-face, with the edges and ends flush. Adhere the full-sized fender pattern to one face of one piece.

2 Drill a pair of 1/4" holes through both pieces where marked on the pattern. Stick a 1/4" dowel through each hole to hold them flush.

Bandsaw the pieces to shape to form the fenders.

3 With the fenders still taped together, sand the edges smooth to remove the saw marks. Separate the pieces and remove the tape.

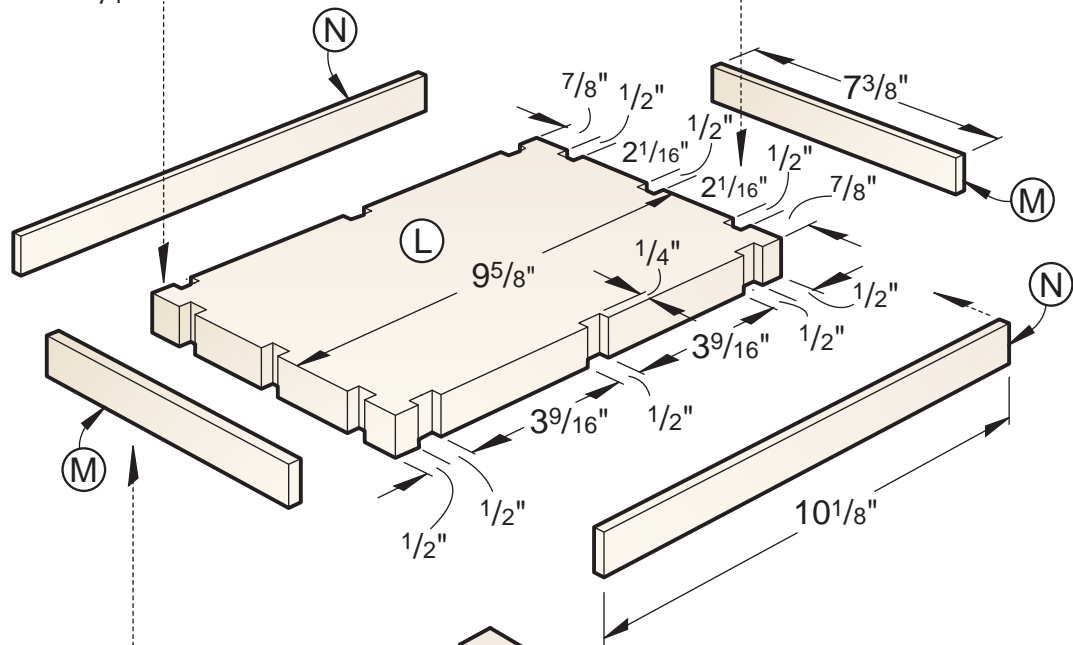
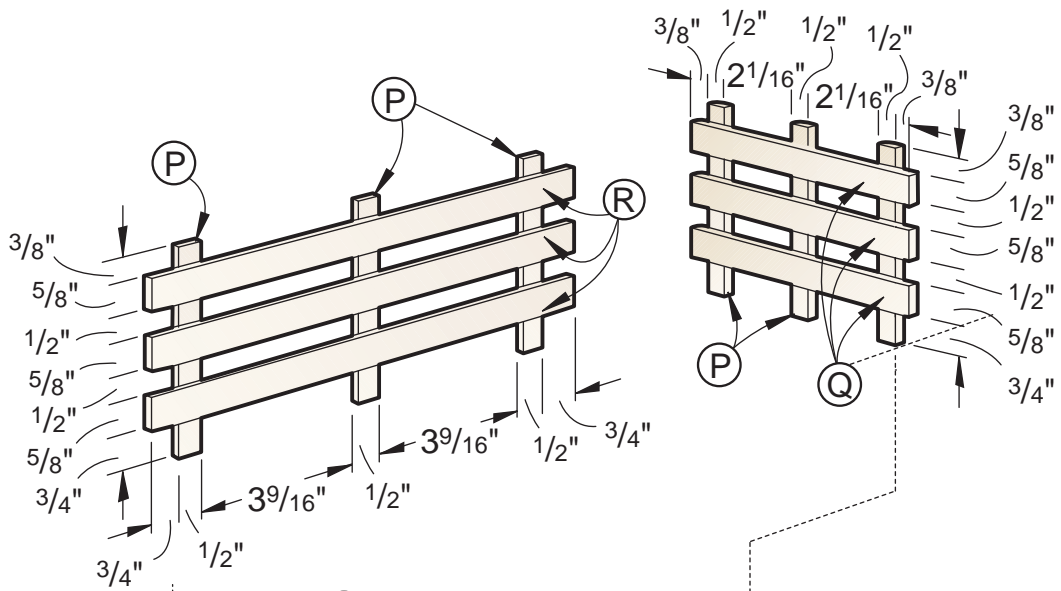
4 Clamp the fenders to the chassis 6 5/8" from the back edge where shown on the Exploded View. Using holes in the fenders as guides, drill 1/4" holes 1/2" deep into the edges of the chassis as shown in the photo on *page 8*. Glue 1/4" dowels 1 1/4" long into the chassis for supporting the fenders.

5 Sand 1/8" round-overs along each edge of each fender.

Add the truck bed and rails for heavy loads

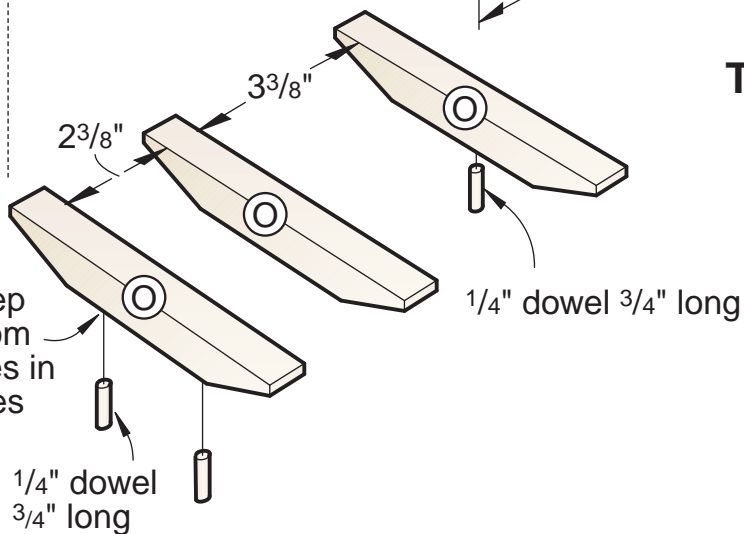
1 Cut the truck-box bed (L) to size. Transfer the dimensioned notches from the Truck Bed drawing to the bed.

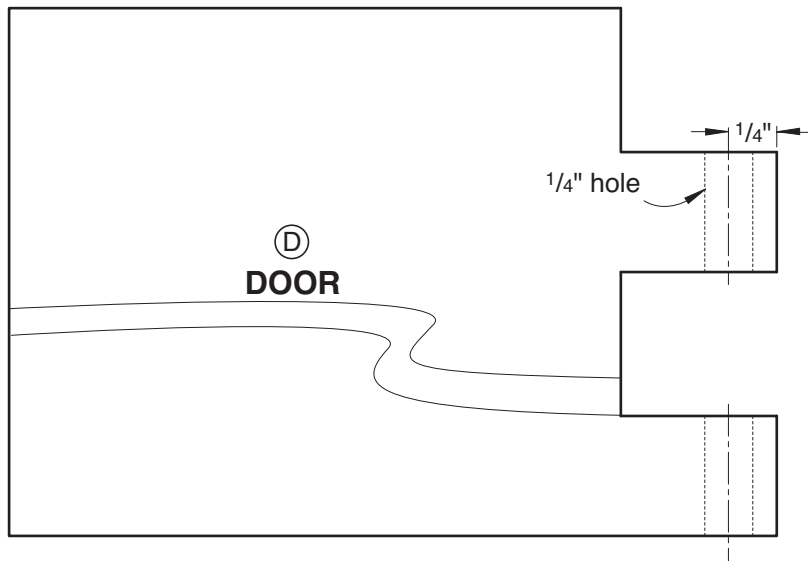
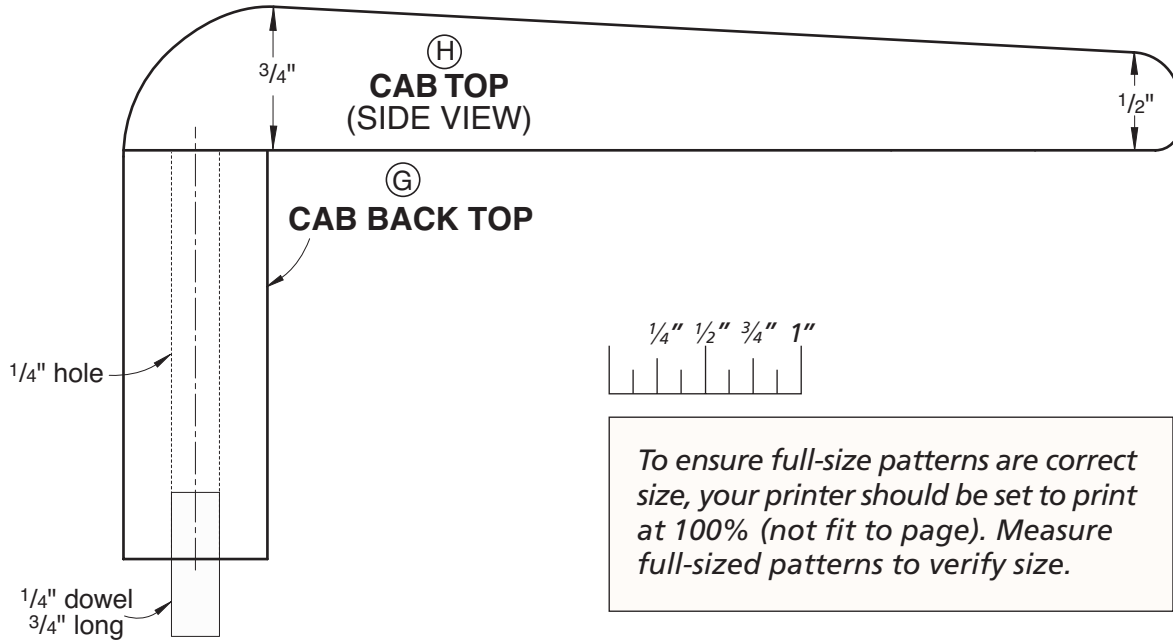
2 Add a 4"-tall extension to your miter gauge. The extension helps minimize chipout. Fit your tablesaw



TRUCK BED

1/4" hole 3/8" deep drilled into bottom of rib using holes in part (E) as guides



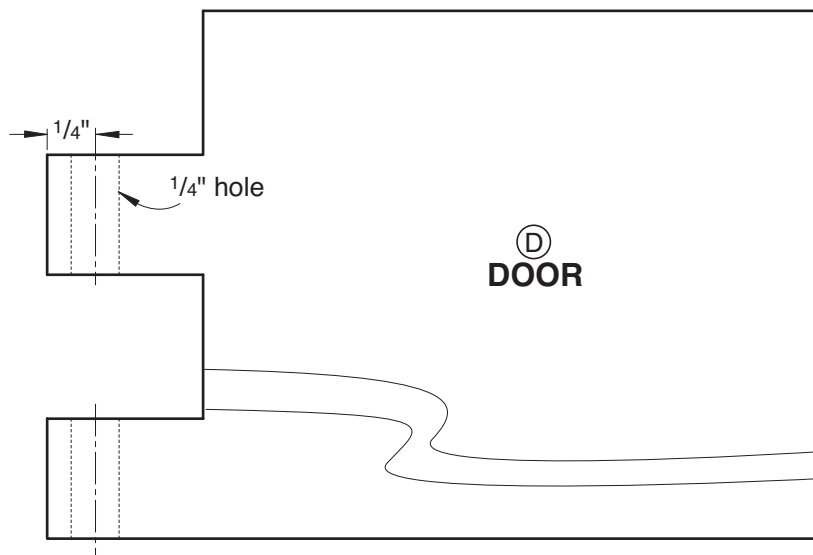


Written by: **Marlen Kemmet**
 Project Design: **James R. Downing**
 Graphic Design: **Lorna Johnson**
 Illustrations: **Kim Downing, Lorna Johnson**
 Photograph: Hetherington Studio: Baldwin Photography
 ©Copyright Meredith Corporation 1998

Buying Guide

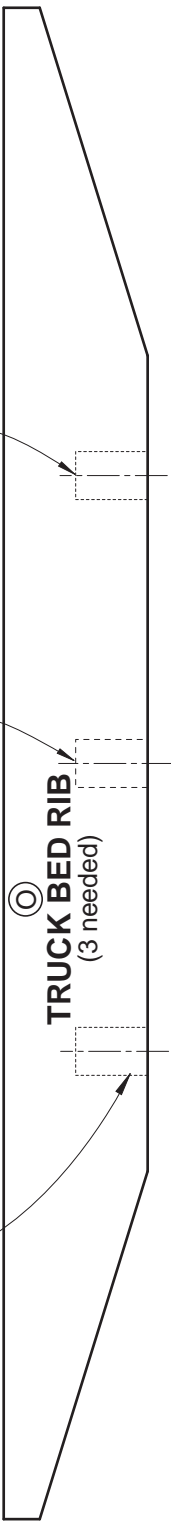
Hardwood Kit Hardwood kit. All the individual pieces shown on the Cutting Diagram cut oversized from the thickness and species listed in the Bill of Materials, plus six 3-1/2" spoked wheels. Kit no. W92, \$59.95 ppd. For just the six wheels, order Kit no. W92W, #18 ppd. Heritage Building Specialties, 205 North Cascade, Fergus Falls, MN 56537. Call 800/524-4184 to order.

Toy Catalog. To view other toys from the designer of this project, got to www.baldwintoy.com



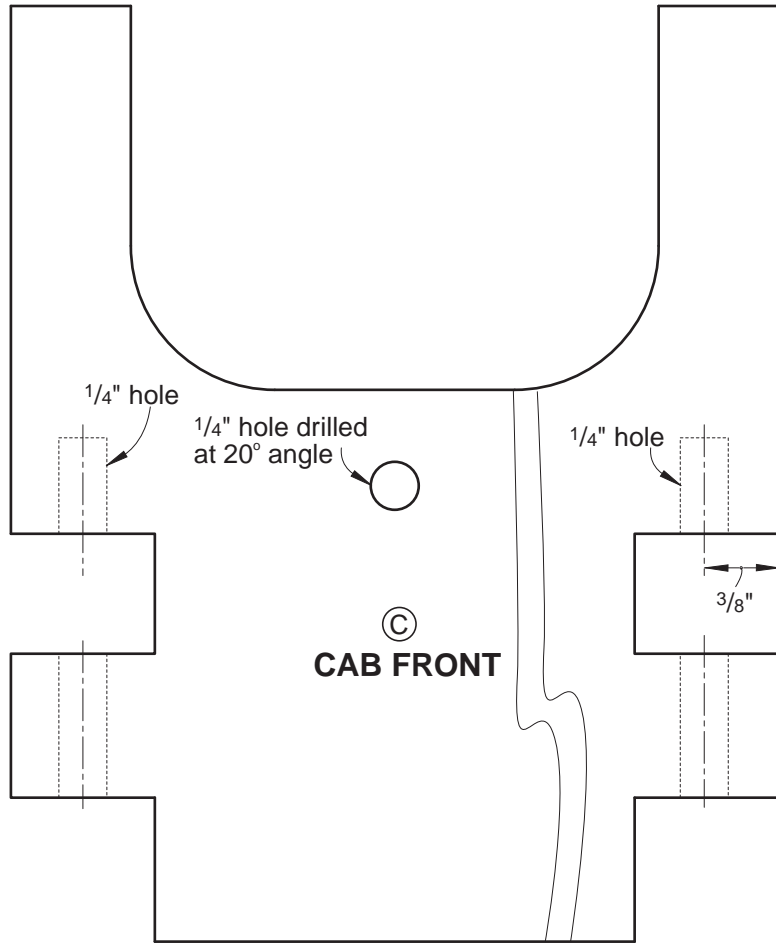
1/4" hole 3/8" deep drilled into bottom of rib, using holes in box base (E) as guides (Front rib only)

1/4" hole 3/8" deep drilled into bottom of rib, using hole in box base (E) as guides (Rear rib only)

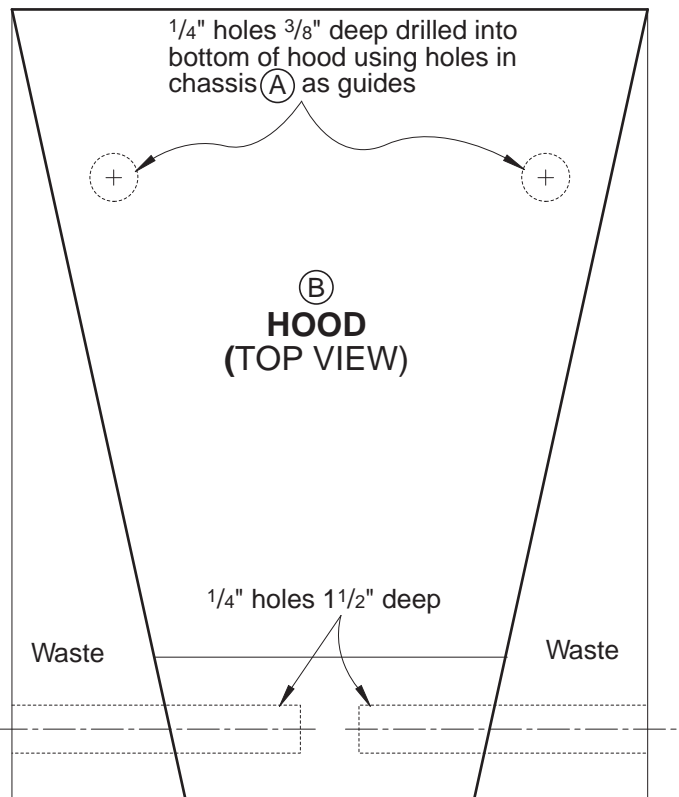


©
TRUCK BED RIB
(3 needed)

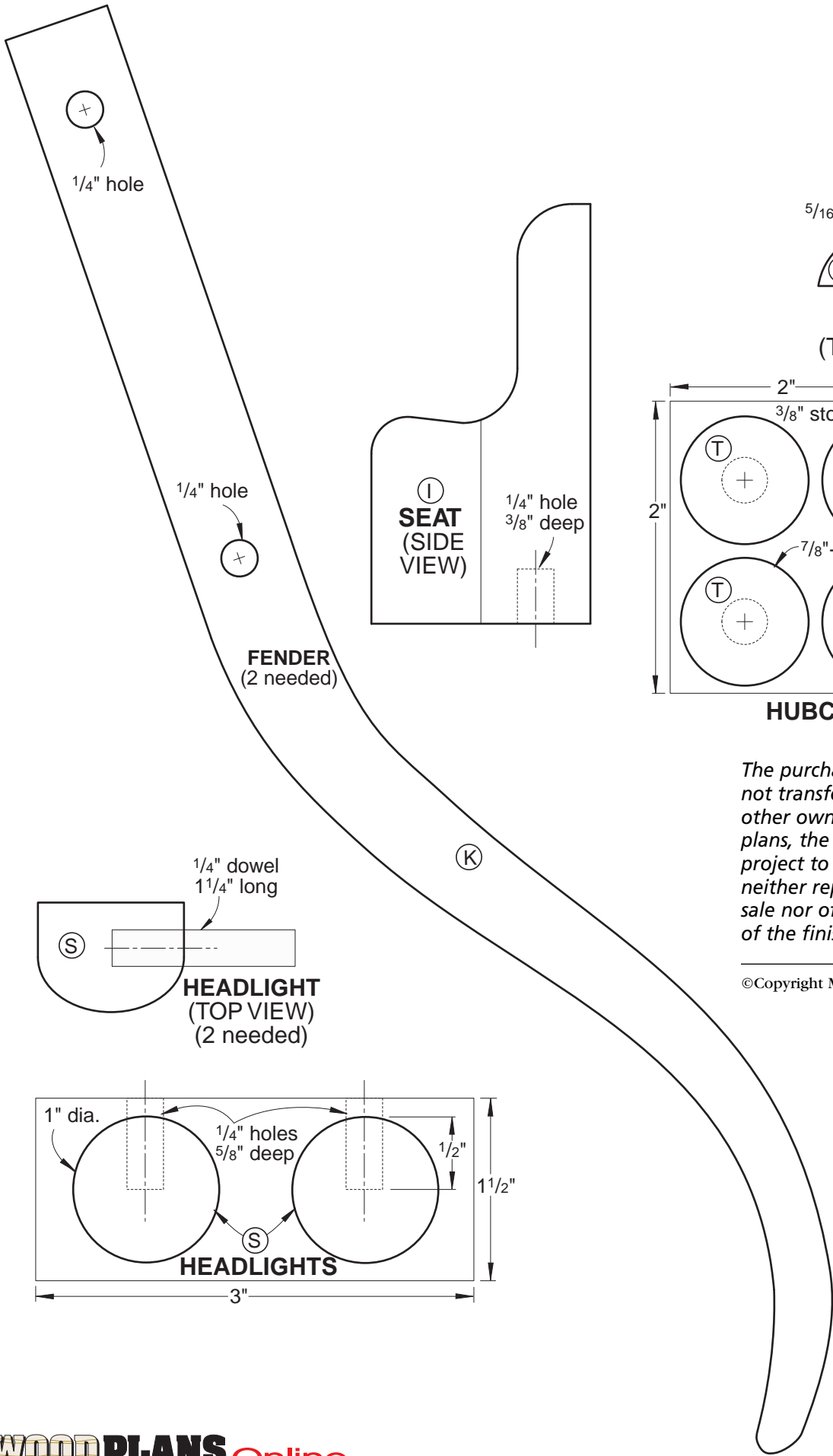
1/4" hole 3/8" deep drilled into bottom of rib, using holes in box base (E) as guides (Front rib only)



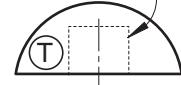
©
CAB FRONT



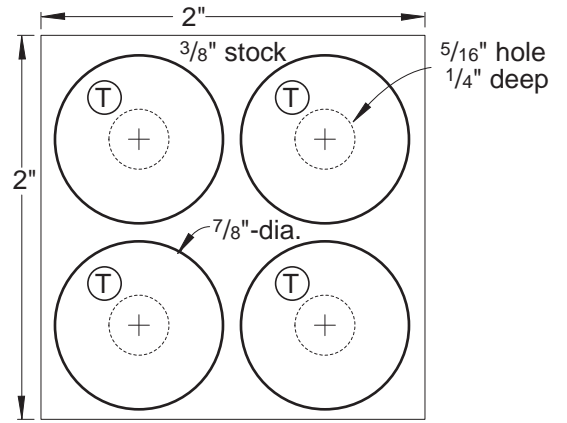
©
HOOD
(TOP VIEW)



$5/16"$ hole $1/4"$ deep



**HUBCAP
(TOP VIEW)**

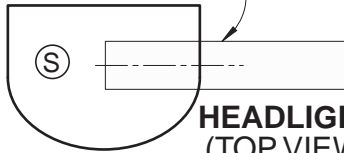


HUBCAPS

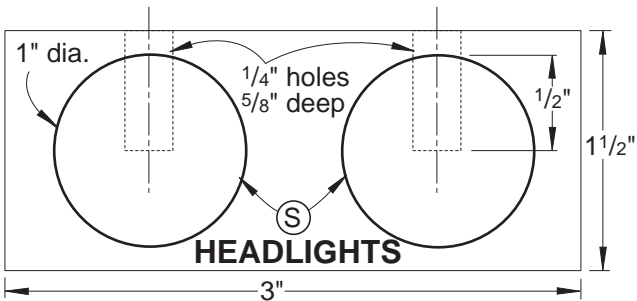
The purchase of these plans does not transfer any copyright or other ownership interest in the plans, the design, or the finished project to the buyer. Buyer may neither reproduce the plans for sale nor offer for sale any copies of the finished project.

©Copyright Meredith Corporation 1998

$1/4"$ dowel
 $1 1/4"$ long



**HEADLIGHT
(TOP VIEW)
(2 needed)**



HEADLIGHTS

WOODMALL® The Internet's Largest Source for Woodworking Tools and Accessories

<http://www.woodmall.com>

Thanks for your order!

Now that you've got a detailed plan to build that perfect project, visit the WOOD MALL for the internet's largest source for woodworking tools and accessories. The WOOD MALL offers:

- Over two dozen woodworking-related stores
- More than 50,000 tools & accessories
- 24-Hour shopping
- Special sales & closeouts
- Nearly 40 tool comparison charts
- **FREE** monthly woodworking seminar

Visit Today! <http://www.woodmall.com>



Current issue not shown

Like no other magazine, WOOD helps you make the most of your shop time ... takes your skills to the next level. Every issue of WOOD is jam-packed with ...

- Smart tips, tricks, secrets and shortcuts that save you time, effort and money
- Valuable tool reviews with at-a-glance information charts that give you helpful product comparisons
- Giant full-size pattern pull-outs
- Crystal-clear step-by-step instructions, exploded diagrams, finishing secrets and techniques for that professional look – everything you need to bring out your woodworking genius!

- 2 years (14 issues) just \$44 **SAVE \$39.30 off single-copy rate!**
- 1 year (7 issues) just \$26 **SAVE \$15.65 off single-copy rate!**
- Payment Enclosed Bill Me

Fill out information below and mail to: WOOD® Magazine P.O. BOX 37439, Boone, IA. 50037-0439 or Subscribe Online at <http://www.woodmagazine.com/subscribe>

My Name (please print) _____

Address _____ **Apt. #** _____

City _____ **State** _____ **Zip** _____

Canadian Orders: Fill in the form above. Your rate will be 1 year (7 issues) for \$41 – SAVE \$14.65, or 2 years (14 issues) for \$67 – SAVE \$44.30. Prices include postage; 7% GST or 15% HST is added. #12348 2887 RT

U.S. and Canadian subscribers: You also may order by credit card. Call toll free 1-800-374-9663 weekdays from 7 a.m. to 10 p.m. Central Time; Saturdays, 8 a.m. to 3 p.m.; Sundays, 9 a.m. to 3 p.m.

Other International Orders: 2 years for \$89 U.S. or 1 year for \$49 U.S.; prices include postage. To order by credit card call 515/246-6952 during the same hours as listed above (toll charged). Or complete this form; mail with US funds to: WOOD® Magazine, P.O. Box 37439, Boone, IA. 50037-0439 USA.

Your Money-Back Guarantee: You must be satisfied with your subscription or you can get a refund for all unmailed issues.

WOOD® Magazine is published 7 times a year. Savings are based on \$5.95 U.S., \$7.95 Canadian single-copy rate. The first issue mails in 8-12 weeks. Subscription prices subject to change.