

QUICK-GRIP® Clamp Rack

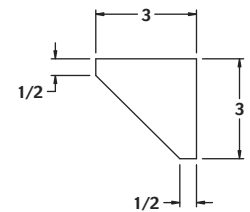
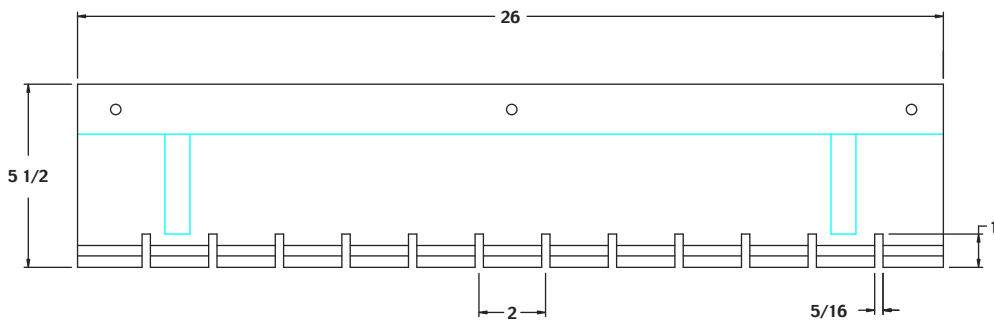
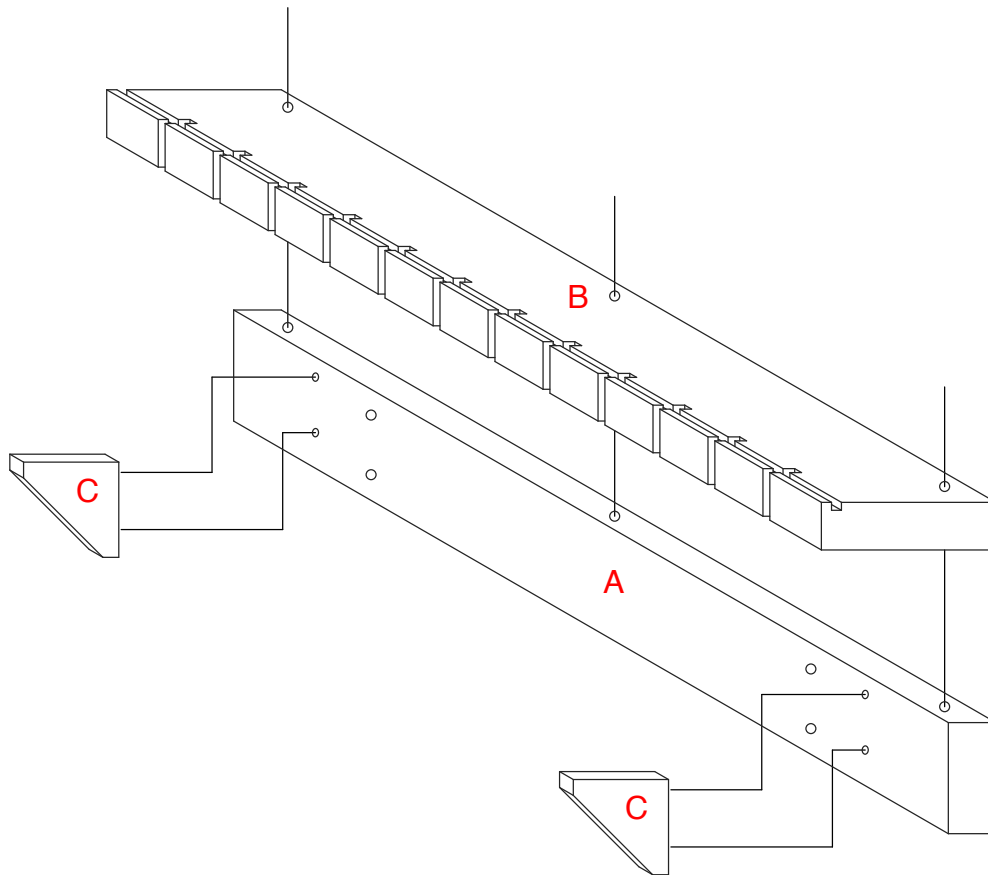
BILL OF MATERIALS

- 1 – 1-1/2" x 3-1/2" x 24" board A. (Standard 2x4)
- 1 – 1-1/2" x 5-1/2" x 24" board B. (Standard 2x6)
- 2 – 3/4" x 3" x 3" support blocks C.
- 4 – 3" drywall or wood screws D.

INSTRUCTIONS

- A) Cut a 5/16" wide by 1/4" deep dado into the top of the length of board B. The dado should set back approximately 5/16" to 3/8" from the front edge of the board.
- B) Mark center of dado on table saw table about 3" in front of blade.
- C) Place marks on board B every 2" on corner next to dado.
- D) Raise dado up to 1".
- E) Align marks on board B with mark on table saw table and cut 5/16" x 1" deep dado every 2" using table saw and t-square.
- F) Glue board B to top edge of board A as shown. Use clamps or screws to hold together while glue dries.
- G) Glue support blocks C equally spaced between 2 grooves toward end of boards. Use screws to hold in place while glue dries.
- H) Mount to studs in wall with screws D.





NOTE: ALL 5/16" GROOVES TO BE 2" ON CENTER.

